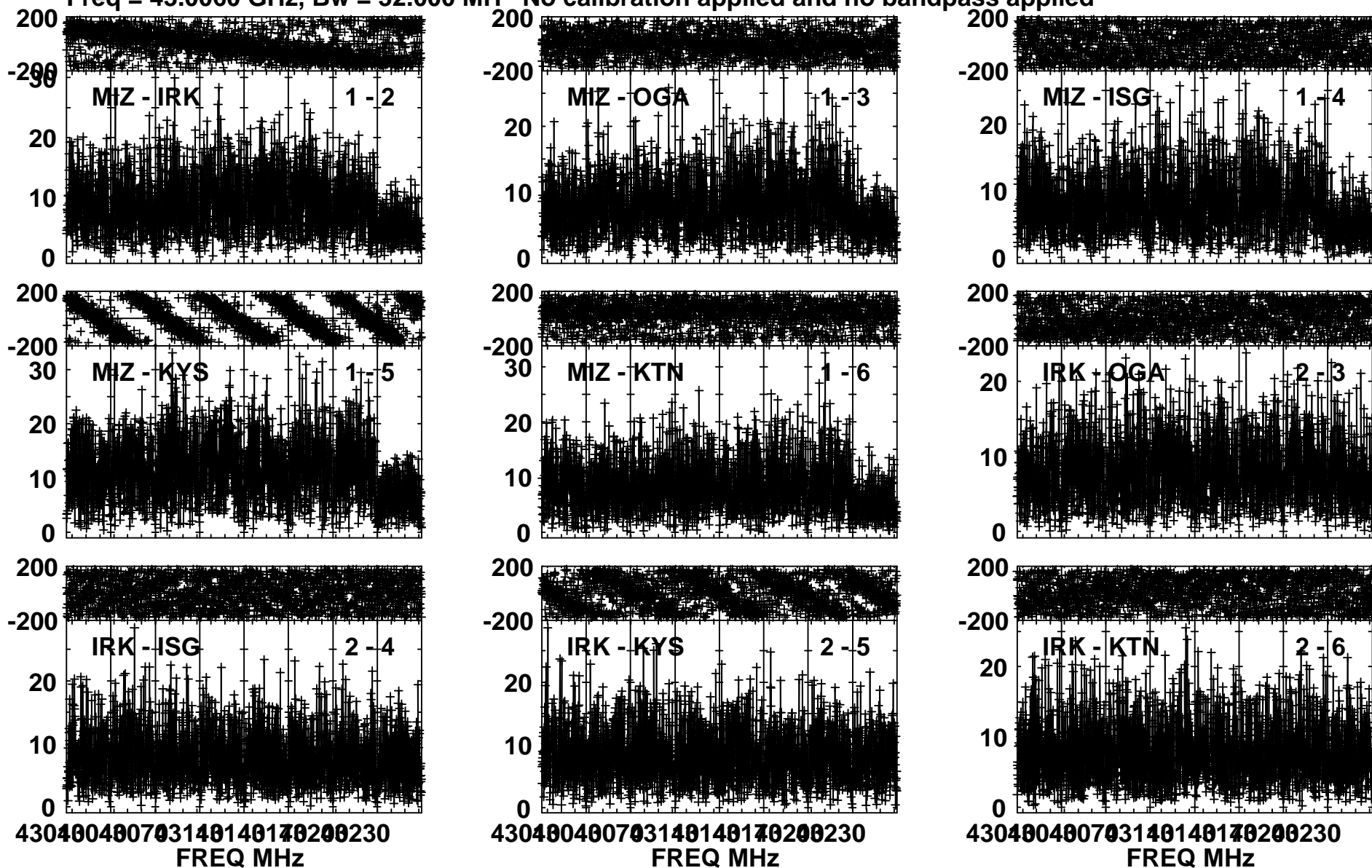


Plot file version 1 created 24-JAN-2018 22:46:41

BLLac R17329A.MSORT.1

Freq = 43.0060 GHz, Bw = 32.000 MH No calibration applied and no bandpass applied



Lower frame: Milli Ampl Jy Top frame: Phas deg

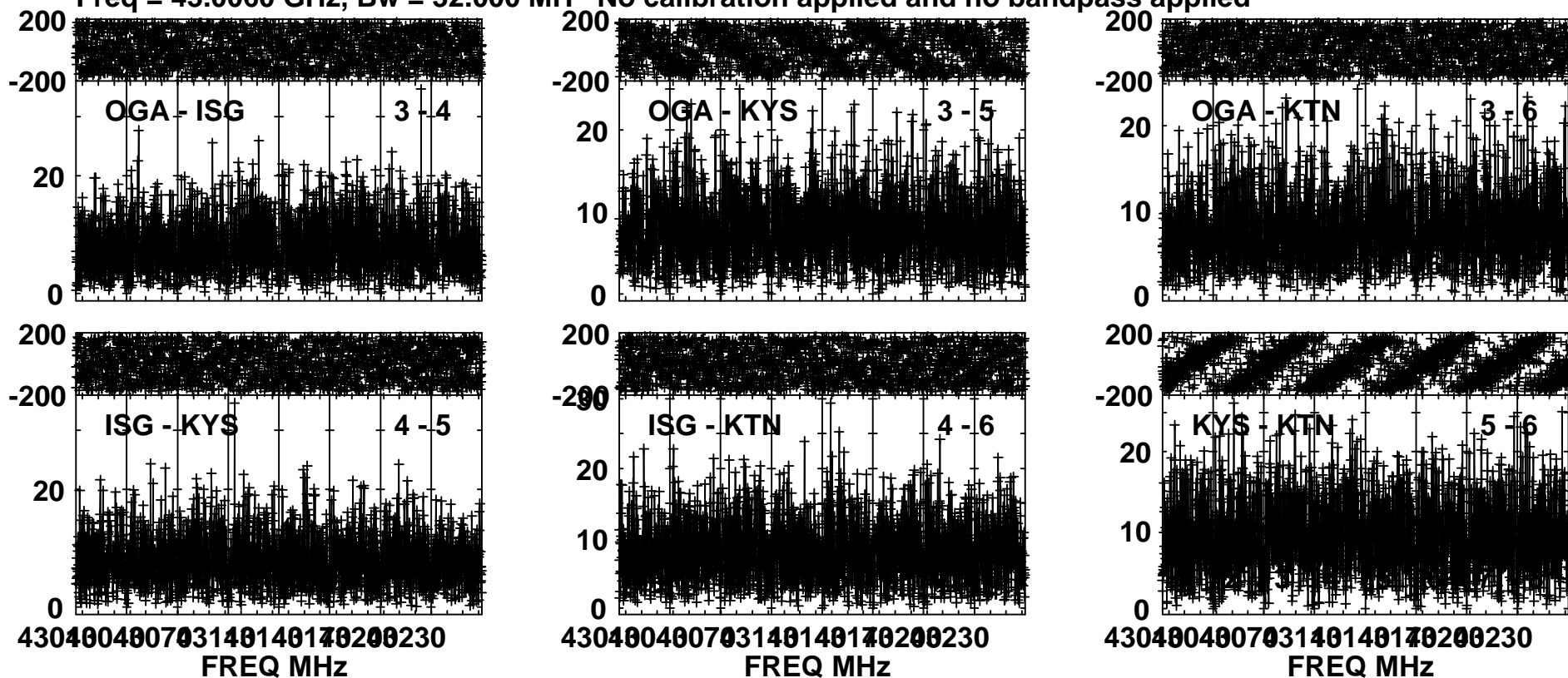
Vector averaged cross-power spectrum Several baselines displayed

Timerange: 00/03:15:00 to 00/03:18:59

Plot file version 2 created 24-JAN-2018 22:46:43

BLLac R17329A.MSORT.1

Freq = 43.0060 GHz, Bw = 32.000 MH No calibration applied and no bandpass applied

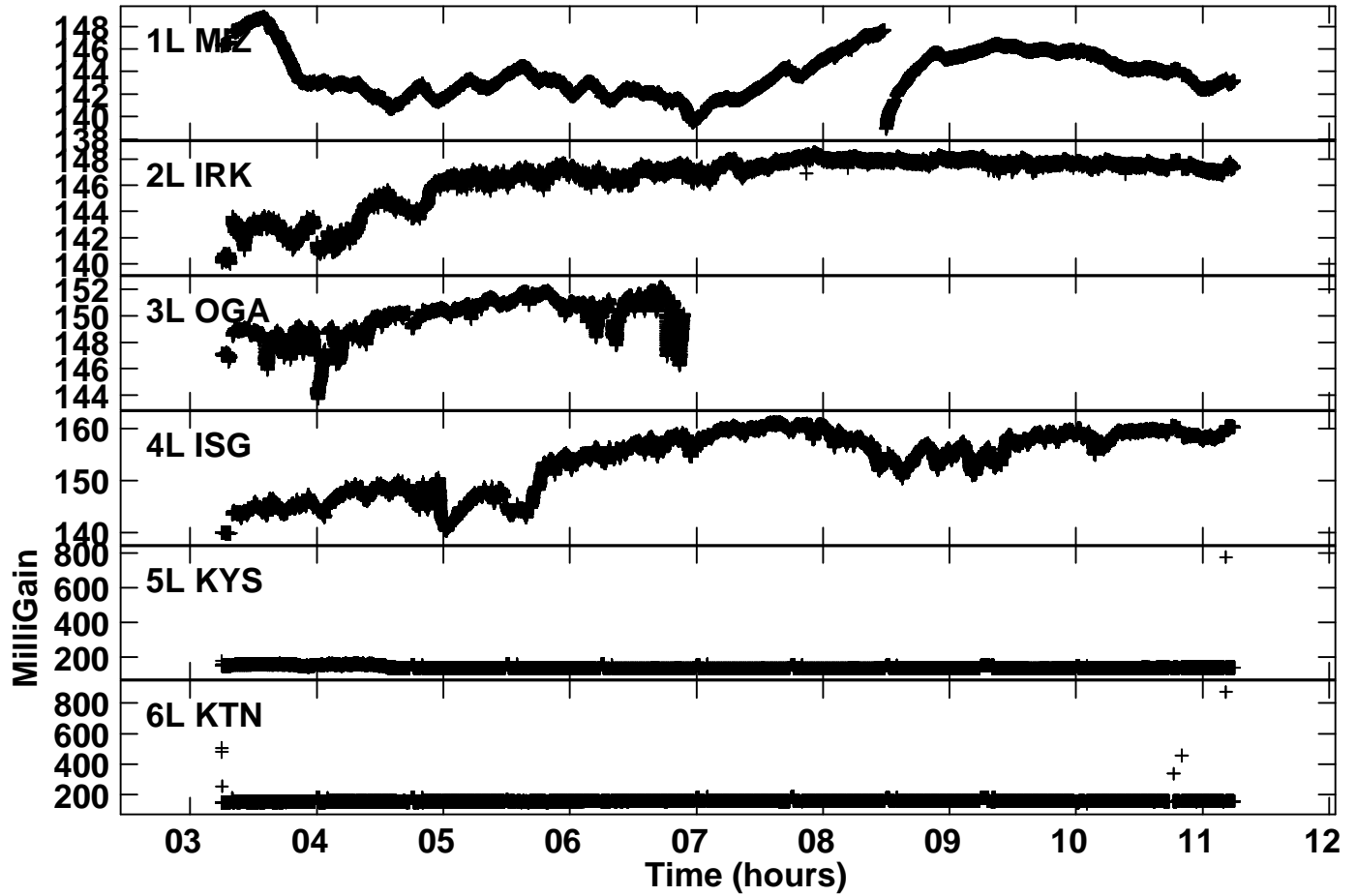


Lower frame: Milli Ampl Jy Top frame: Phas deg

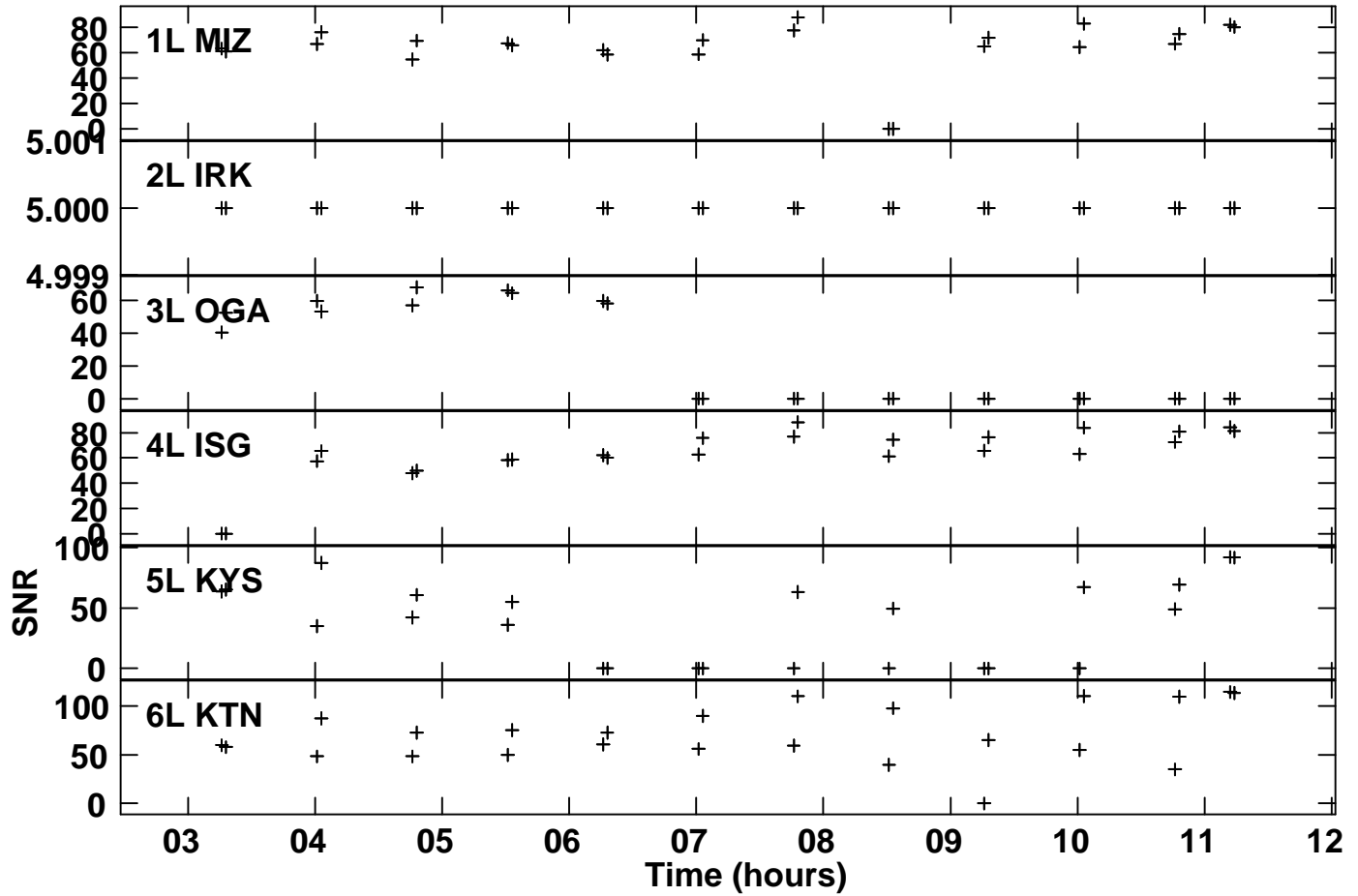
Vector averaged cross-power spectrum Several baselines displayed

Timerange: 00/03:15:00 to 00/03:18:59

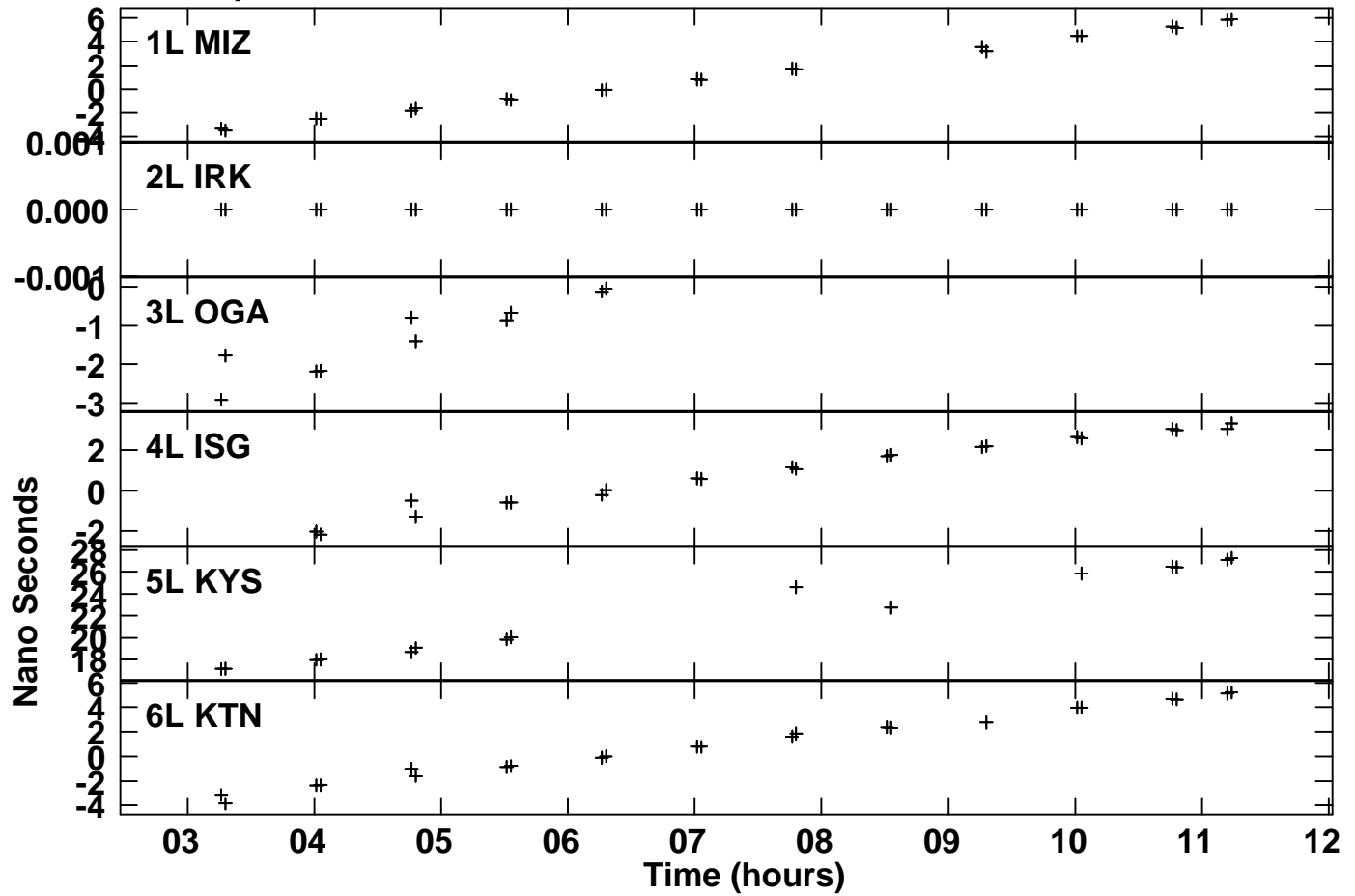
Plot file version 3 created 24-JAN-2018 22:47:14
Gain amp vs time for R17329A.MSORT.1
SN 1 Lpol IF 2



Plot file version 4 created 24-JAN-2018 23:01:04
 SNR vs time for R17329A.MSORT.1
 SN 2 Lpol IF 2



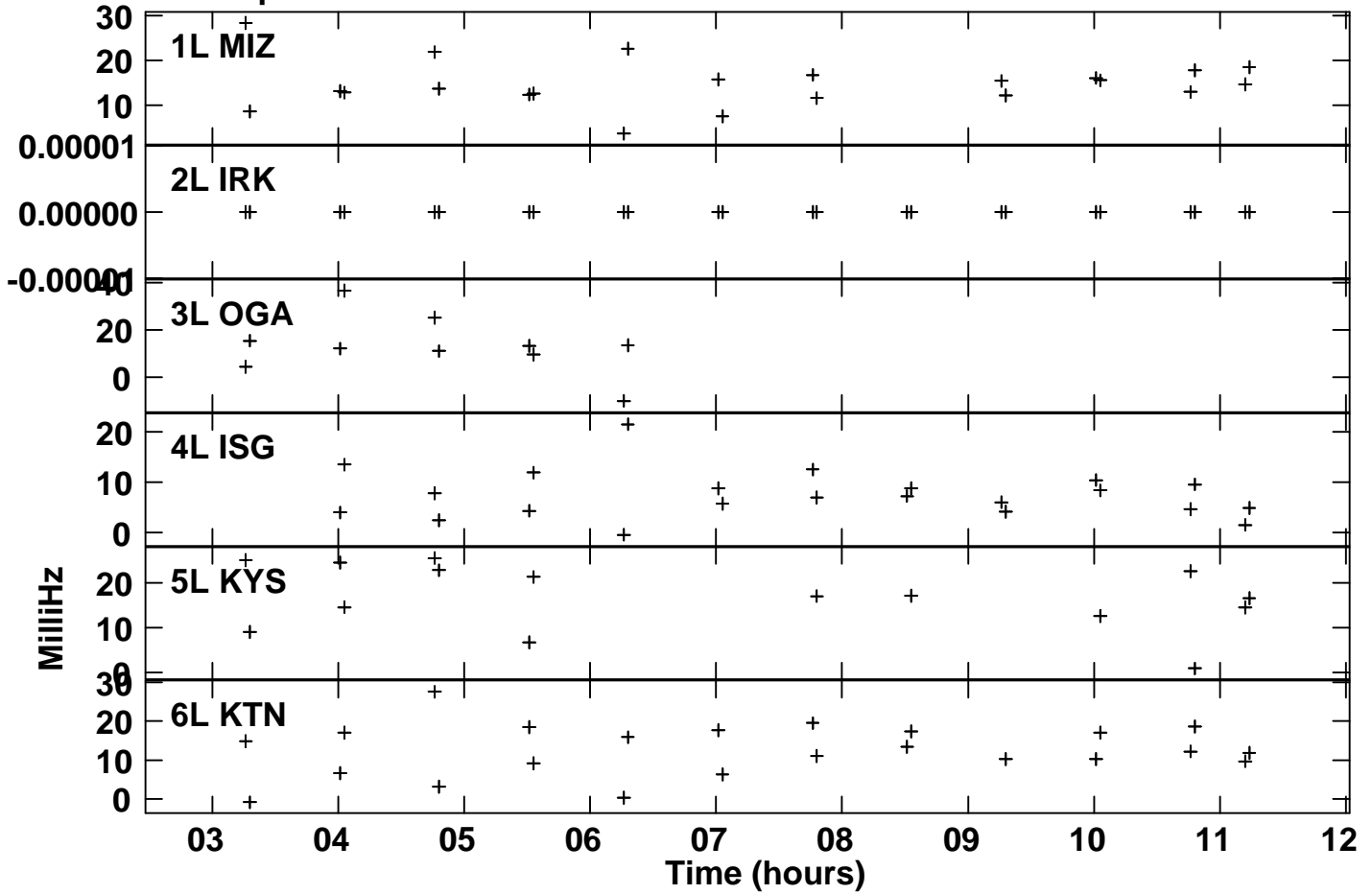
Plot file version 5 created 24-JAN-2018 23:01:08
Delay vs time for R17329A.MSORT.1
SN 2 Lpol IF 2



Plot file version 6 created 24-JAN-2018 23:01:15

Rate vs time for R17329A.MSORT.1

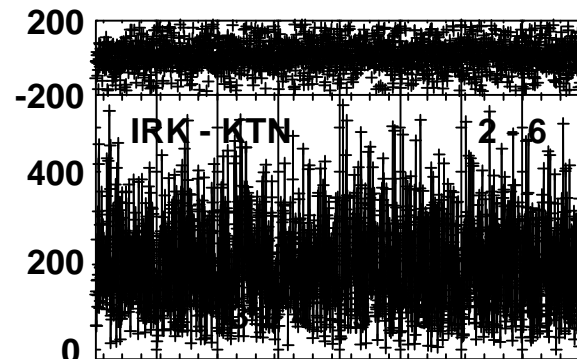
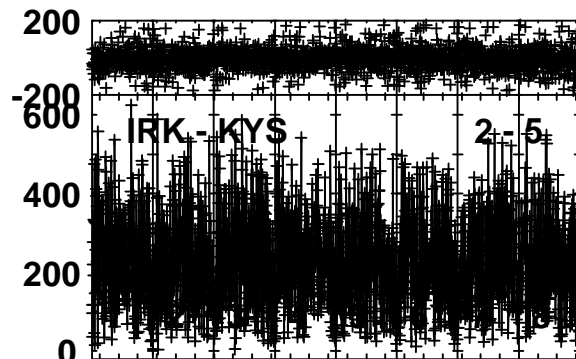
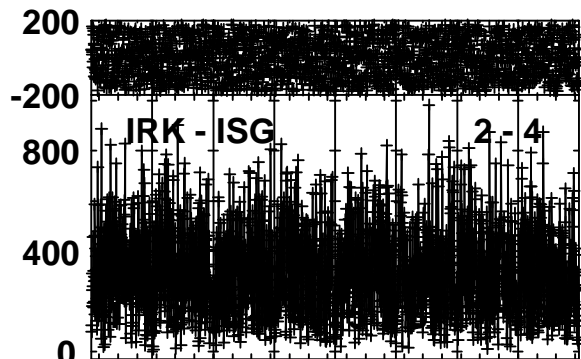
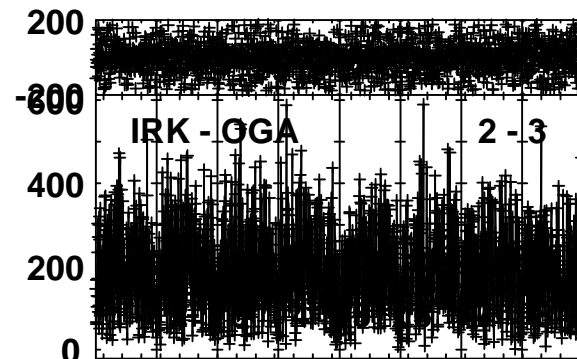
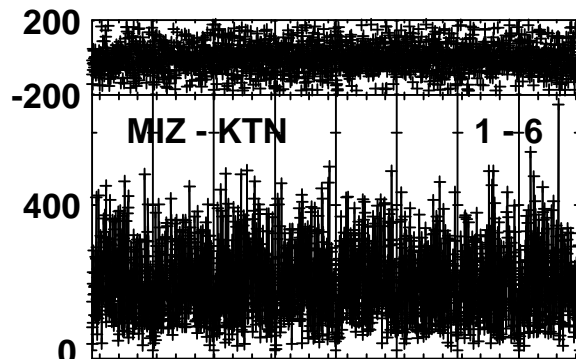
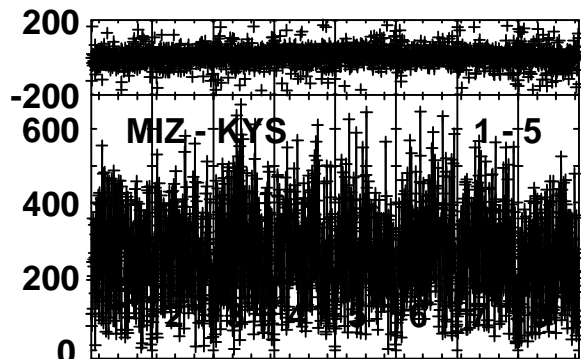
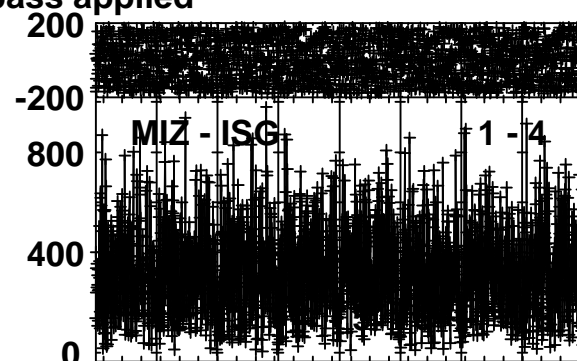
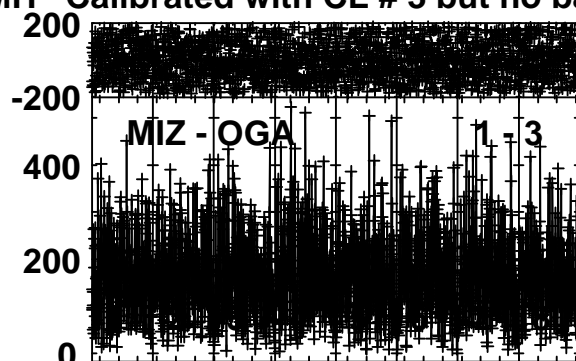
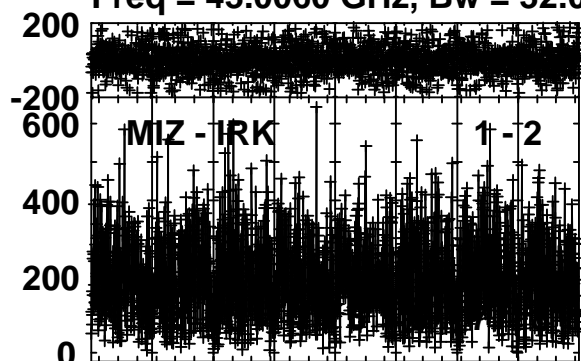
SN 2 Lpol IF 2



Plot file version 7 created 24-JAN-2018 23:04:45

BLLac R17329A.MSORT.1

Freq = 43.0060 GHz, Bw = 32.000 MH Calibrated with CL # 3 but no bandpass applied



430400 480703 140140 170200 230
FREQ MHz

430400 480703 140140 170200 230
FREQ MHz

430400 480703 140140 170200 230
FREQ MHz

Lower frame: Micro Ampl Jy Top frame: Phas deg

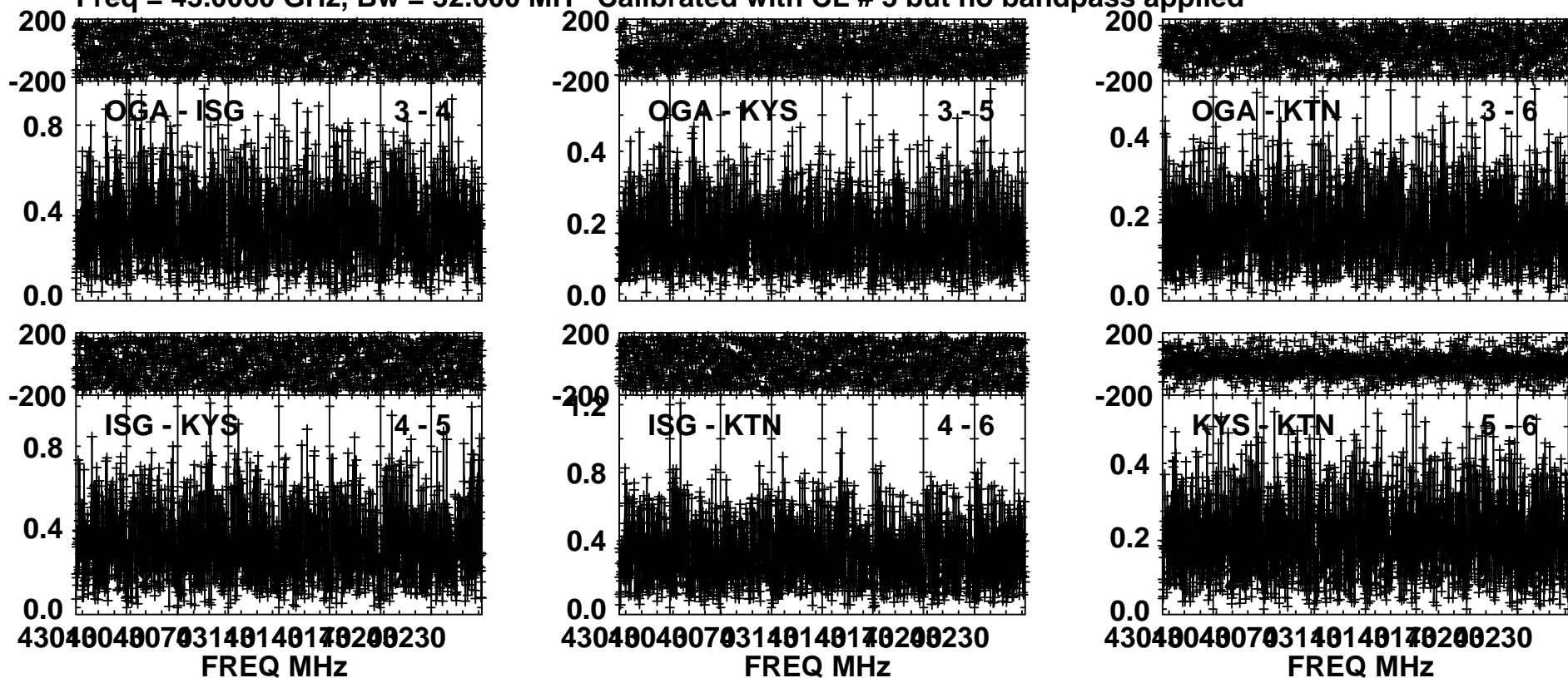
Vector averaged cross-power spectrum Several baselines displayed

Timerange: 00/03:15:00 to 00/03:18:59

Plot file version 8 created 24-JAN-2018 23:04:47

BLLac R17329A.MSORT.1

Freq = 43.0060 GHz, Bw = 32.000 MH Calibrated with CL # 3 but no bandpass applied



Lower frame: Milli Ampl Jy Top frame: Phas deg

Vector averaged cross-power spectrum Several baselines displayed

Timerange: 00/03:15:00 to 00/03:18:59