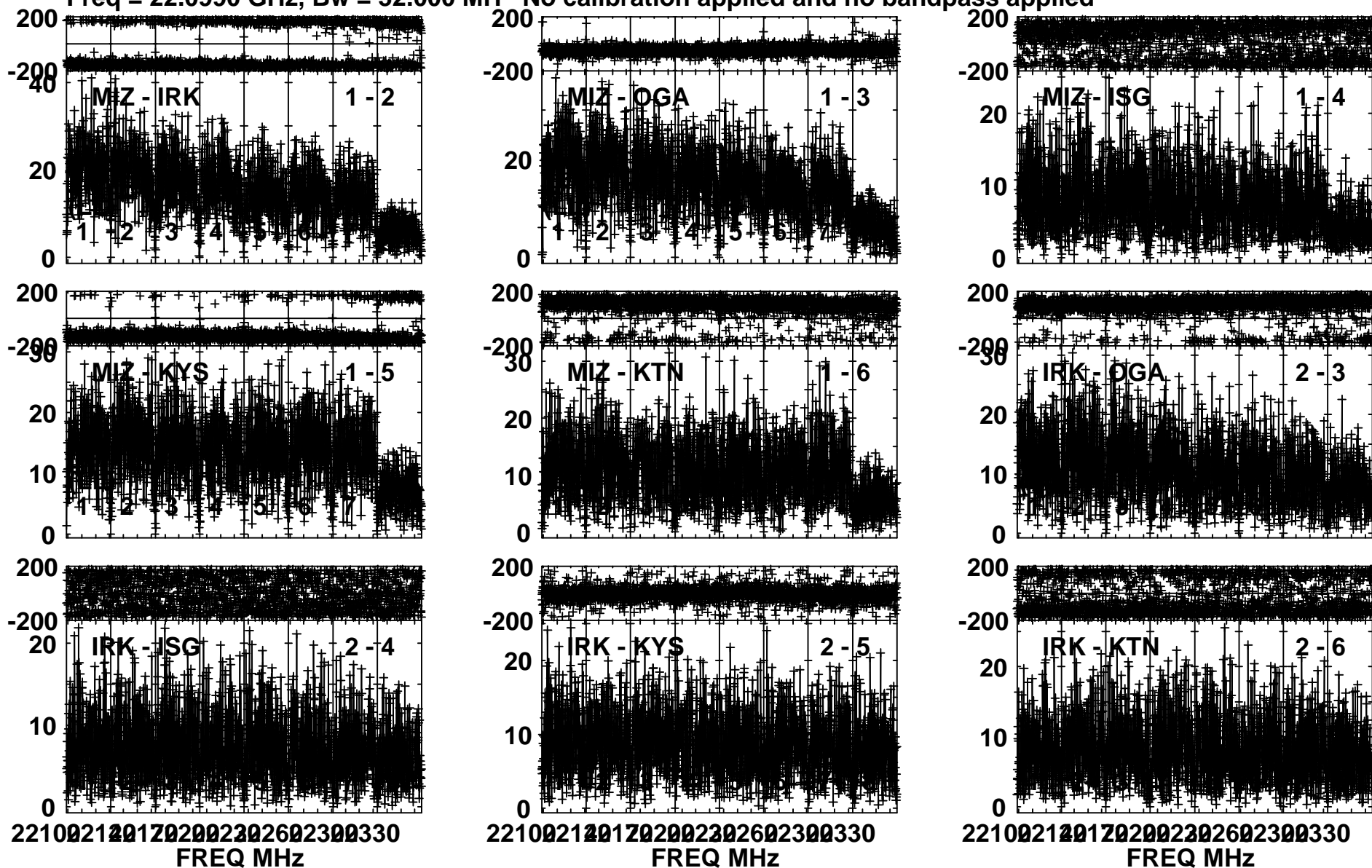


Plot file version 1 created 24-JAN-2018 21:10:49

BLLac R17328A.MSORT.1

Freq = 22.0990 GHz, Bw = 32.000 MH No calibration applied and no bandpass applied



Lower frame: Milli Ampl Jy Top frame: Phas deg

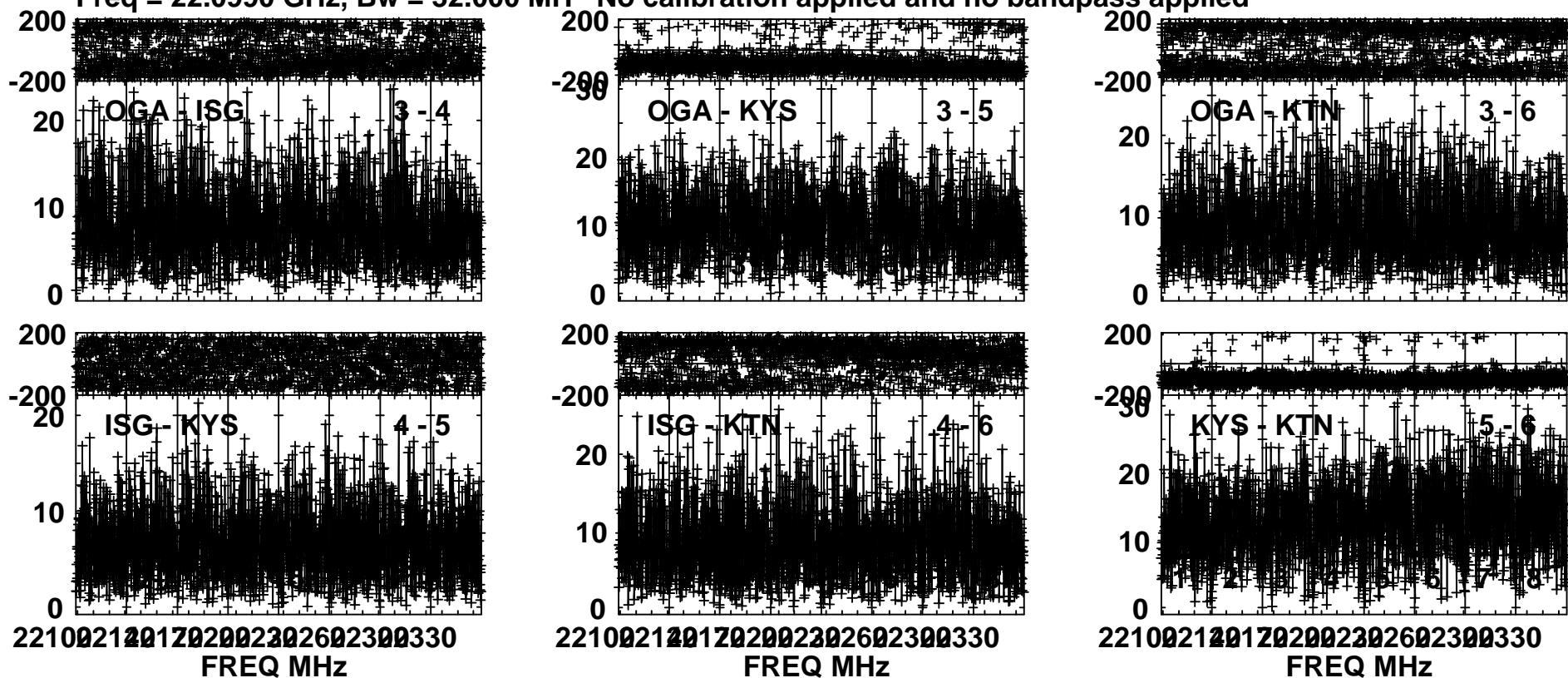
Vector averaged cross-power spectrum Several baselines displayed

Timerange: 00/04:50:01 to 00/04:53:59

Plot file version 2 created 24-JAN-2018 21:10:51

BLLac R17328A.MSORT.1

Freq = 22.0990 GHz, Bw = 32.000 MH No calibration applied and no bandpass applied

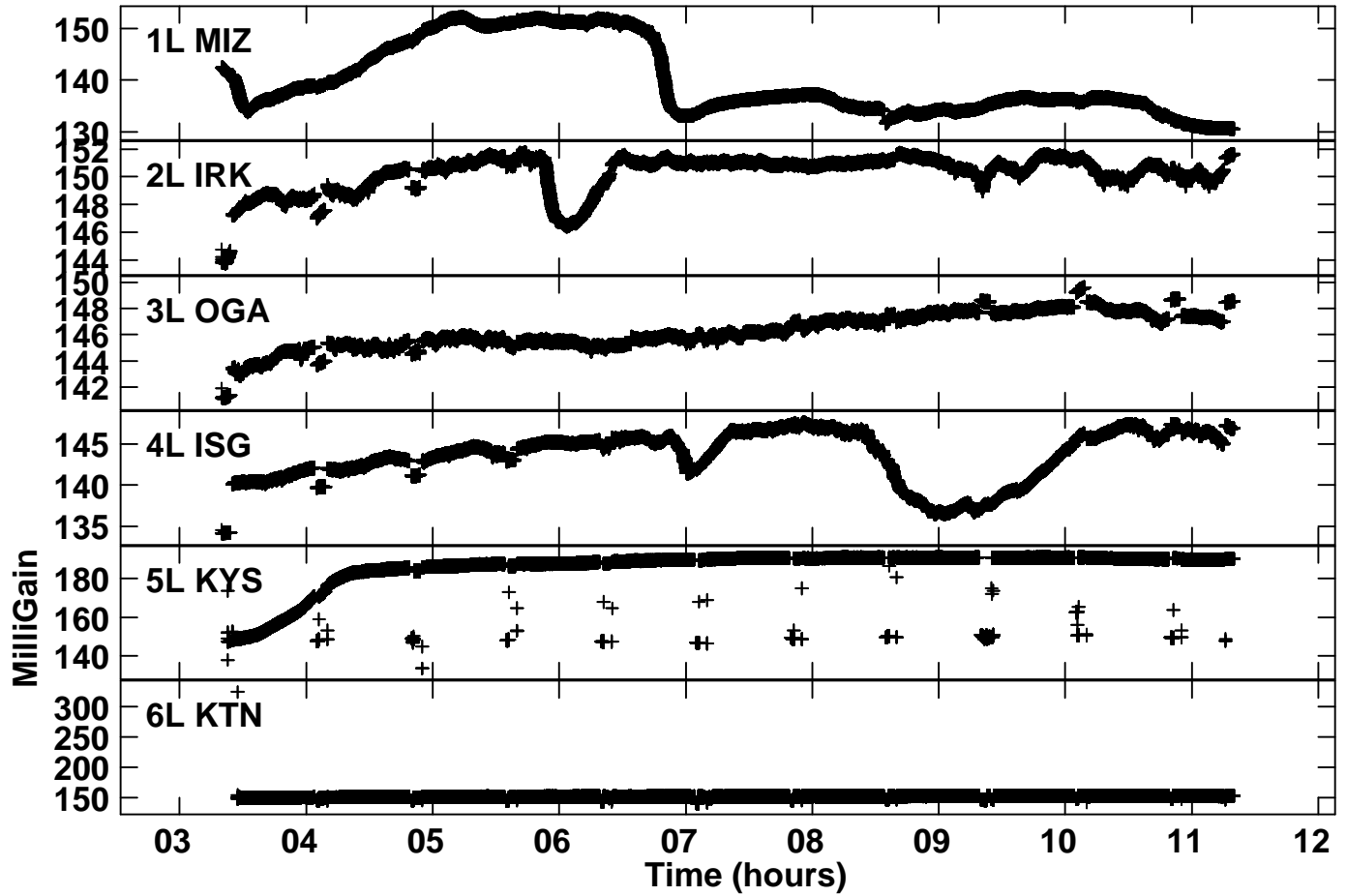


Lower frame: Milli Ampl Jy Top frame: Phas deg

Vector averaged cross-power spectrum Several baselines displayed

Timerange: 00/04:50:01 to 00/04:53:59

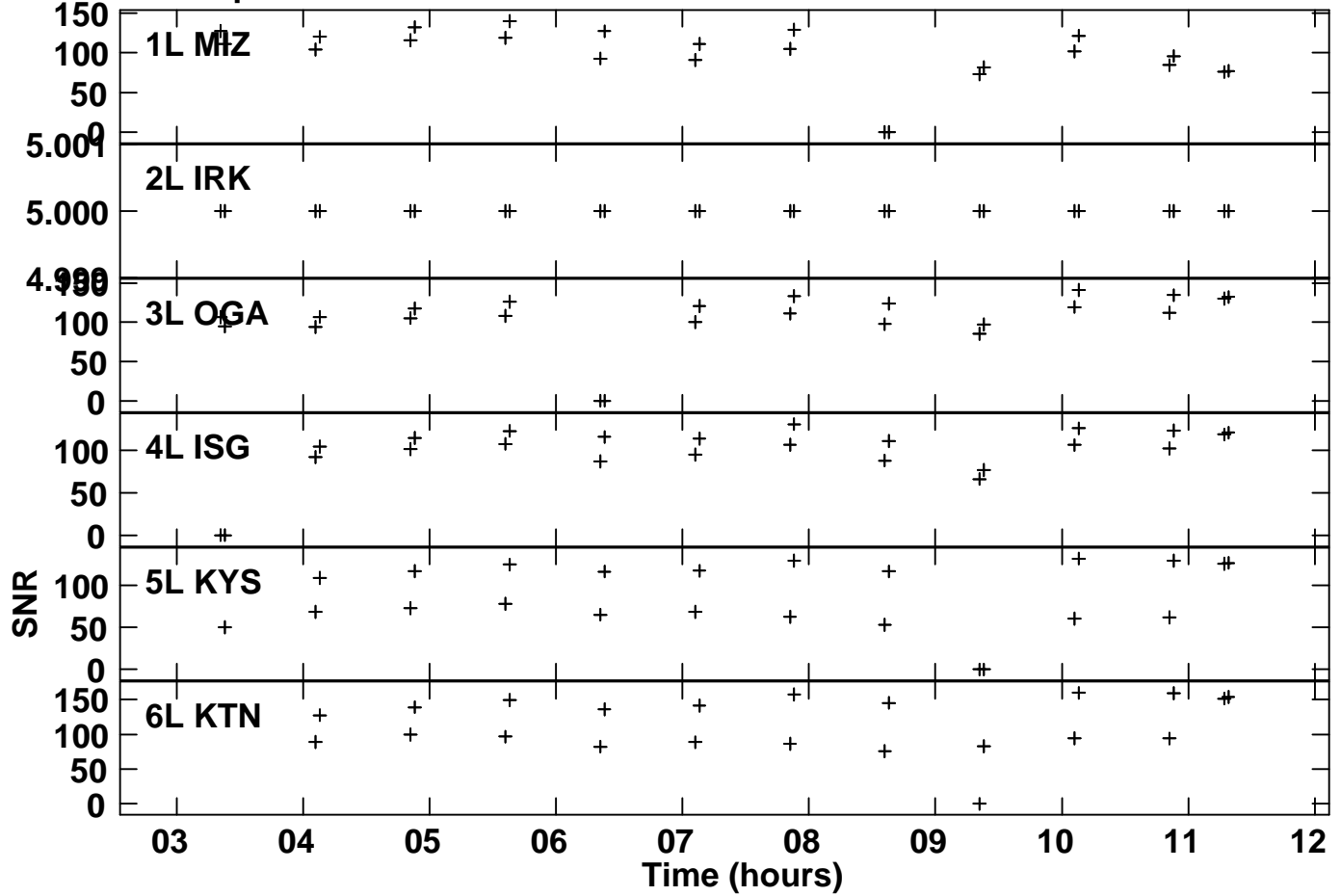
Plot file version 3 created 24-JAN-2018 21:11:26
Gain amp vs time for R17328A.MSORT.1
SN 1 Lpol IF 2



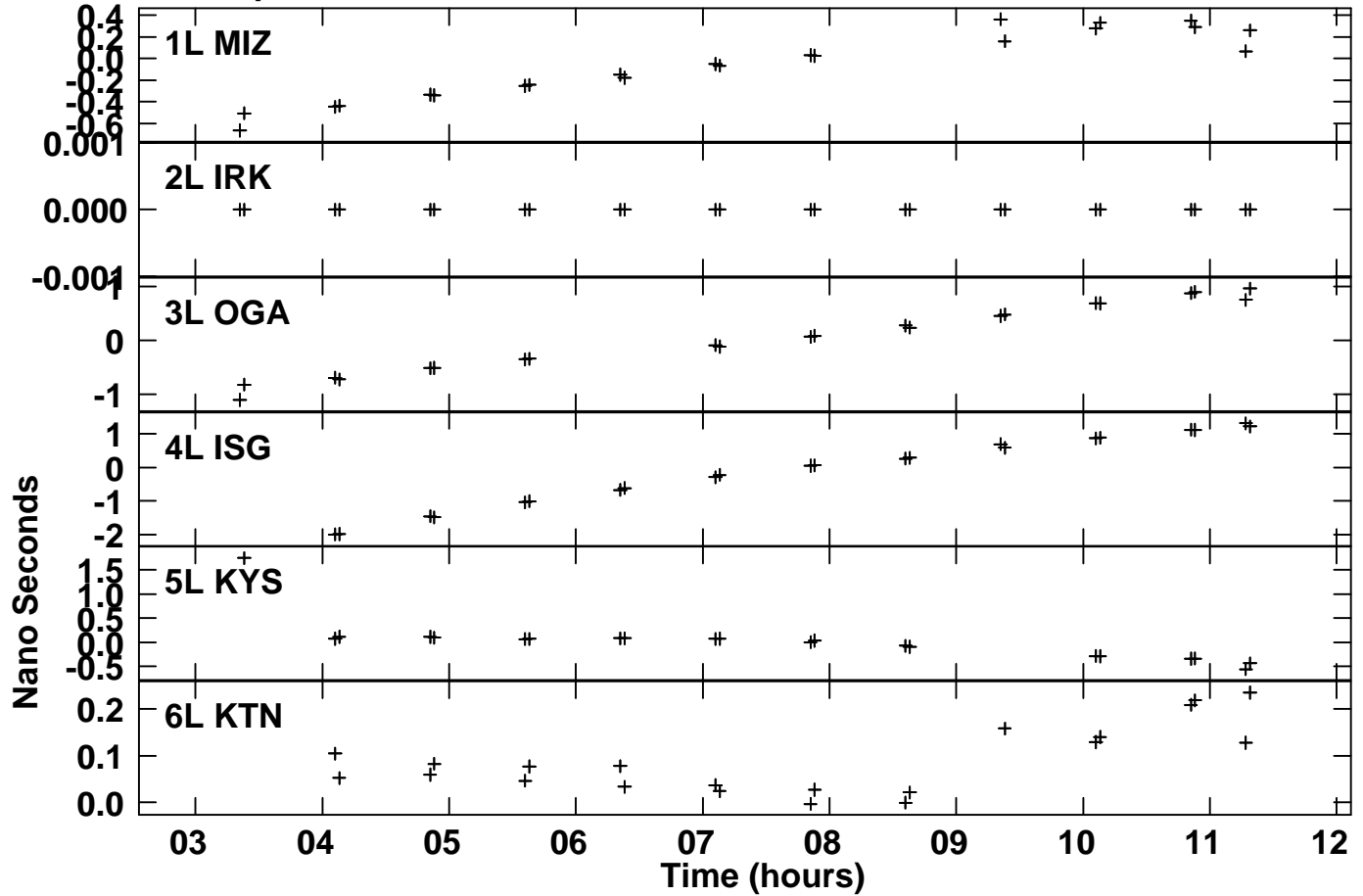
Plot file version 4 created 24-JAN-2018 22:14:34

SNR vs time for R17328A.MSORT.1

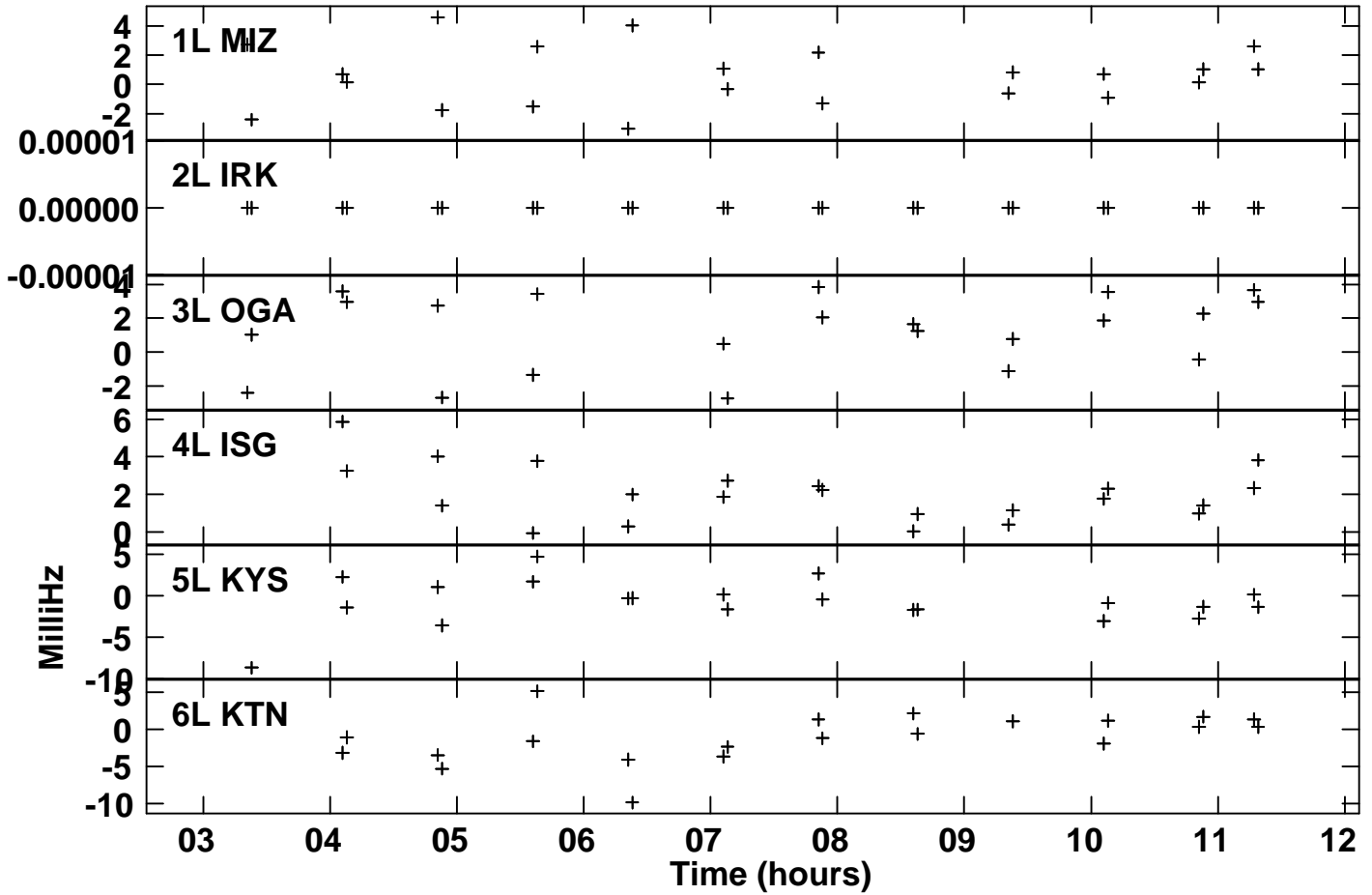
SN 2 Lpol IF 2



Plot file version 5 created 24-JAN-2018 22:14:38
Delay vs time for R17328A.MSORT.1
SN 2 Lpol IF 2



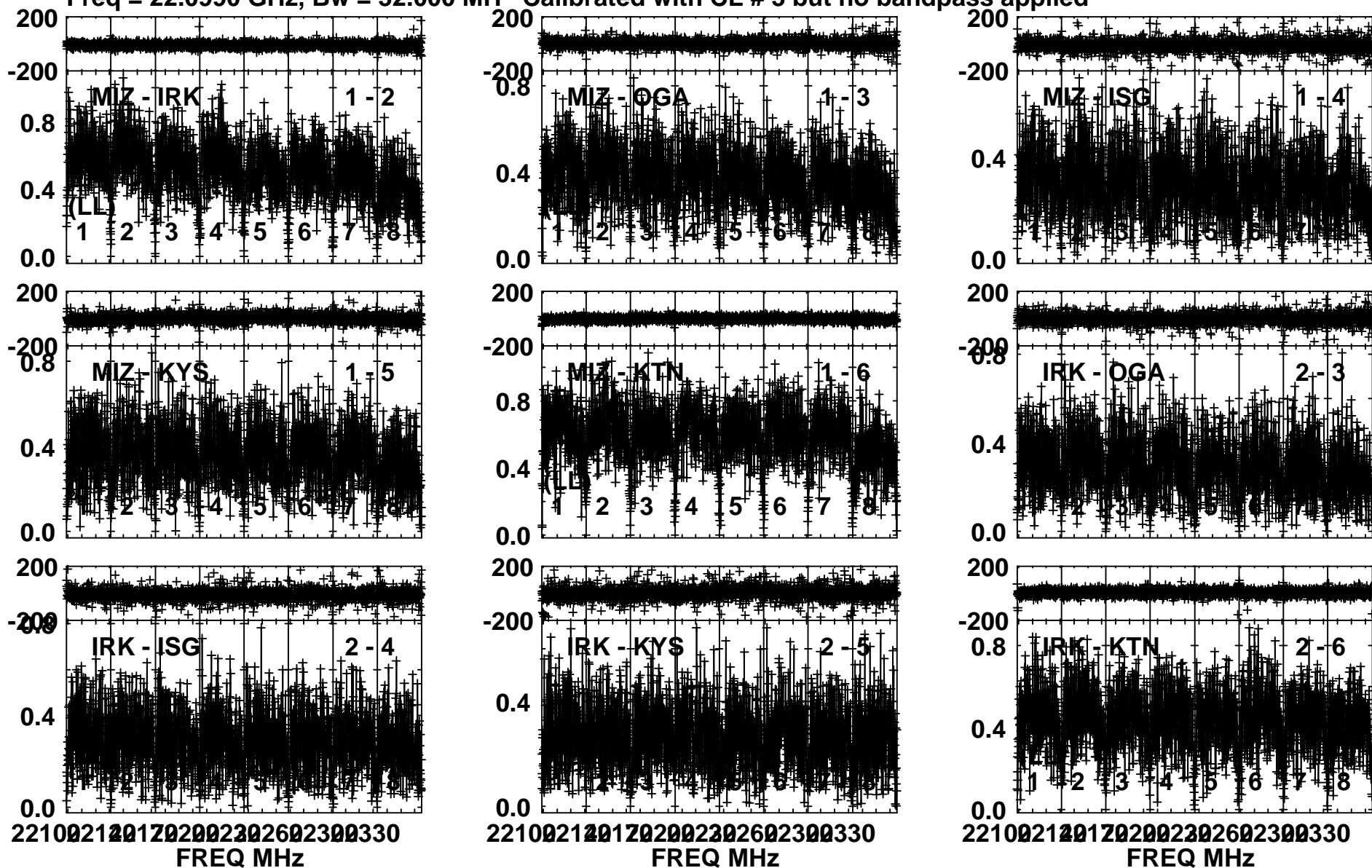
Plot file version 6 created 24-JAN-2018 22:14:41
Rate vs time for R17328A.MSORT.1
SN 2 Lpol IF 2



Plot file version 7 created 24-JAN-2018 22:15:16

BLLac R17328A.MSORT.1

Freq = 22.0990 GHz, Bw = 32.000 MH Calibrated with CL # 3 but no bandpass applied



Lower frame: Milli Ampl Jy Top frame: Phas deg

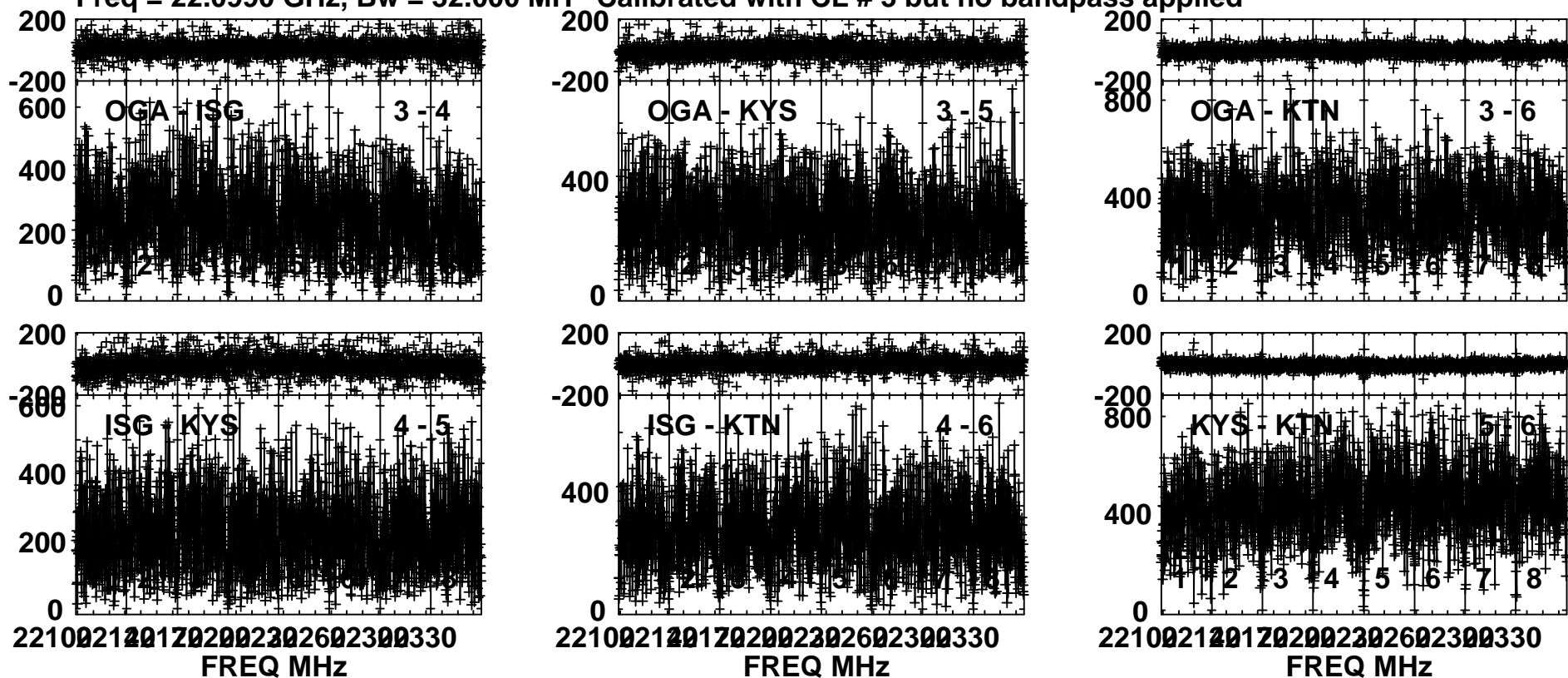
Vector averaged cross-power spectrum Several baselines displayed

Timerange: 00/04:50:01 to 00/04:53:59

Plot file version 8 created 24-JAN-2018 22:15:18

BLLac R17328A.MSORT.1

Freq = 22.0990 GHz, Bw = 32.000 MH Calibrated with CL # 3 but no bandpass applied



Lower frame: Micro Ampl Jy Top frame: Phas deg

Vector averaged cross-power spectrum Several baselines displayed

Timerange: 00/04:50:01 to 00/04:53:59