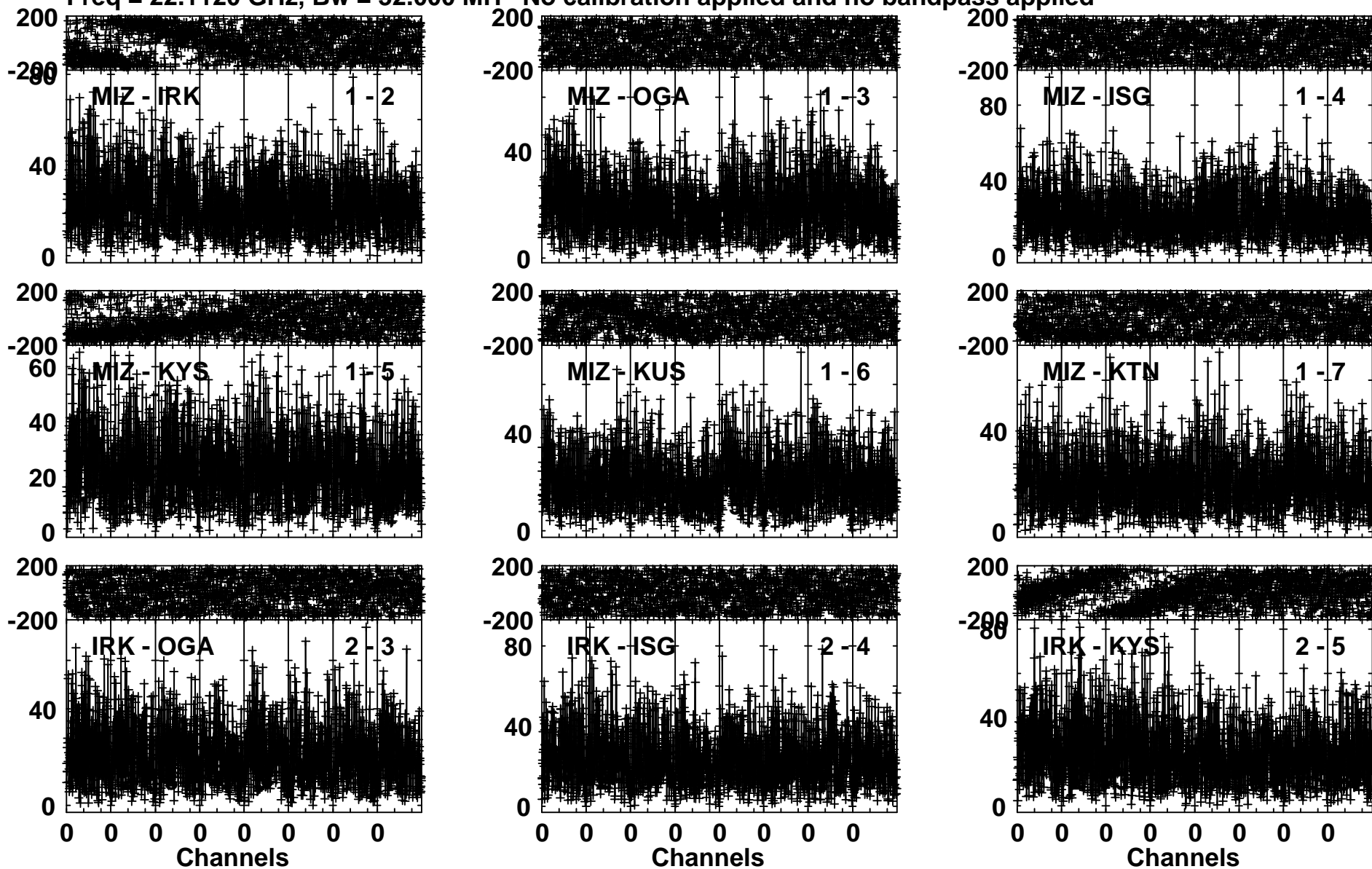


Plot file version 1 created 15-DEC-2016 19:13:51

J1506+3730 R16315C.MSORT.1

Freq = 22.1120 GHz, Bw = 32.000 MH No calibration applied and no bandpass applied



Lower frame: Milli Ampl Jy Top frame: Phas deg

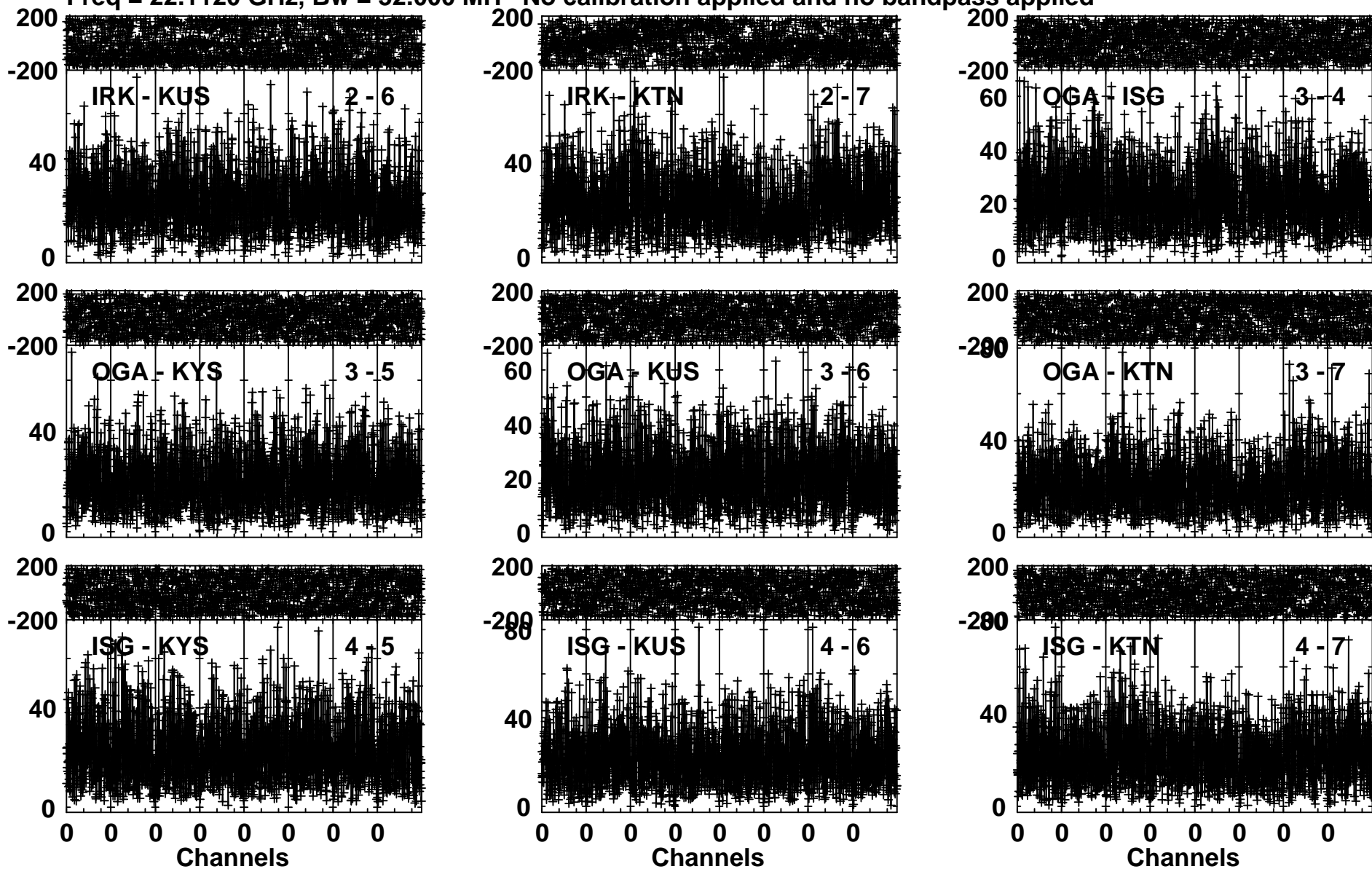
Vector averaged cross-power spectrum Several baselines displayed

Timerange: 00/23:12:31 to 00/23:14:29

Plot file version 2 created 15-DEC-2016 19:13:51

J1506+3730 R16315C.MSORT.1

Freq = 22.1120 GHz, Bw = 32.000 MH No calibration applied and no bandpass applied

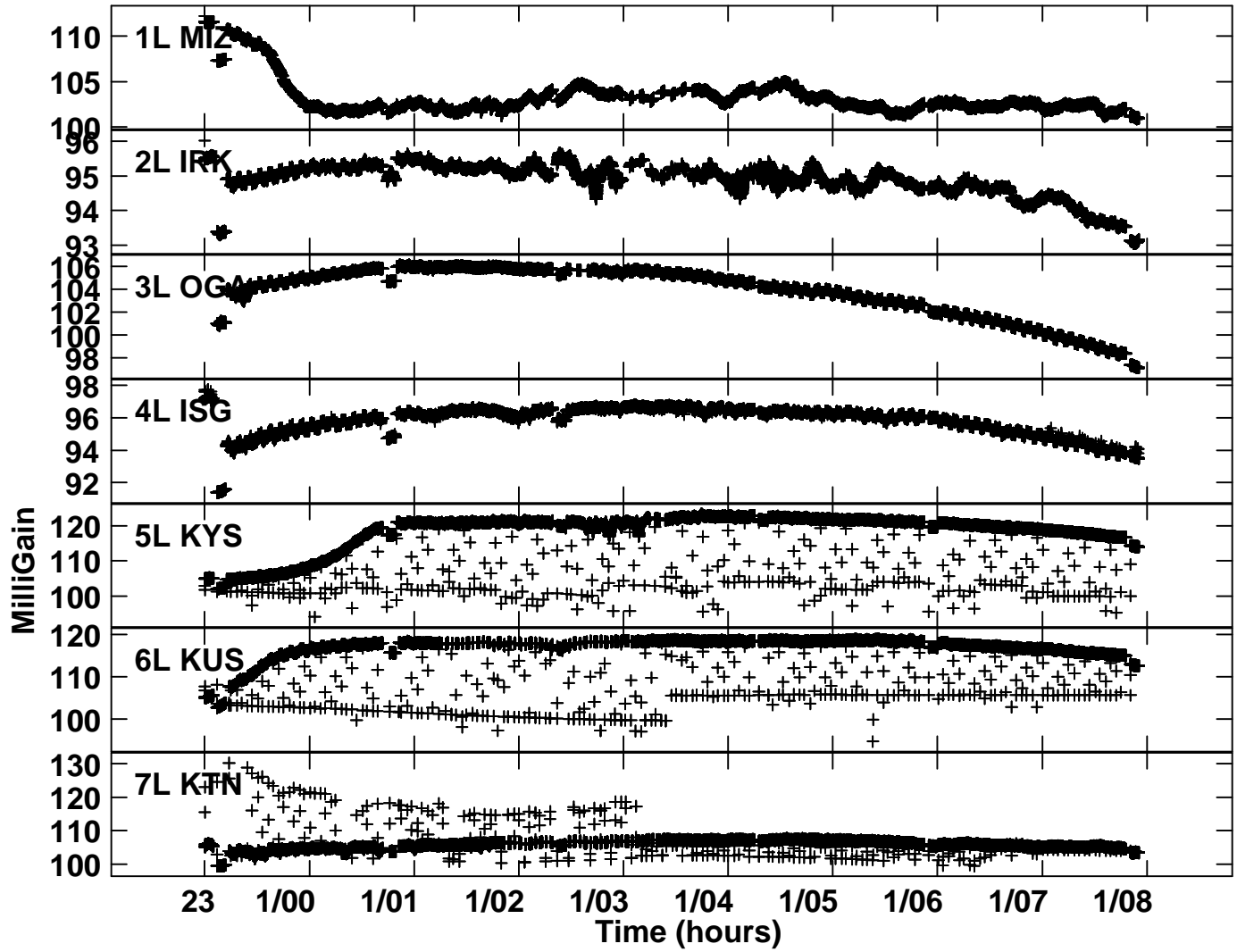


Lower frame: Milli Ampl Jy Top frame: Phas deg

Vector averaged cross-power spectrum Several baselines displayed

Timerange: 00/23:12:31 to 00/23:14:29

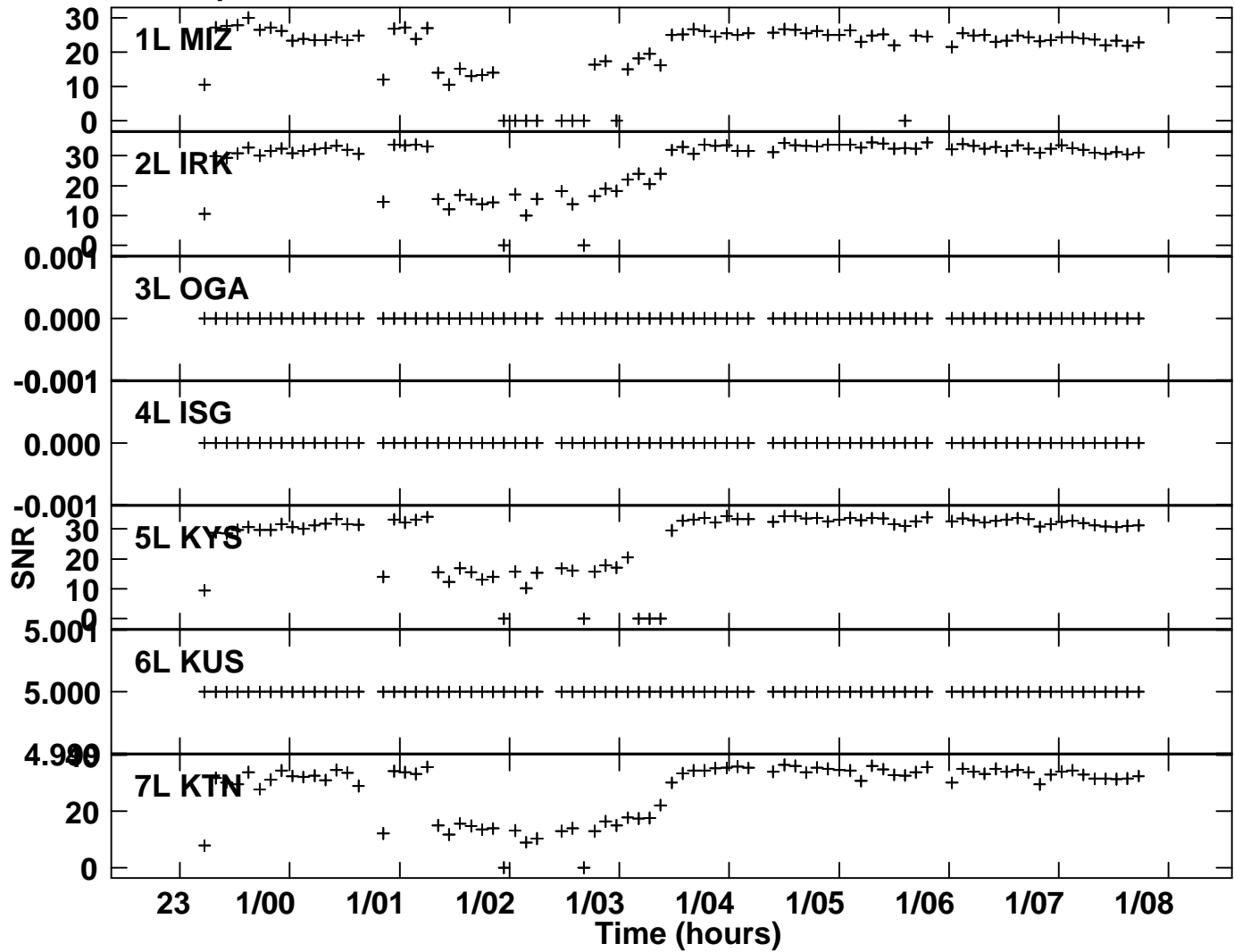
Plot file version 4 created 15-DEC-2016 19:14:11
Gain amp vs time for R16315C.MSORT.1
SN 1 Lpol IF 2



Plot file version 5 created 19-DEC-2016 09:39:46

SNR vs time for R16315C.MSORT.1

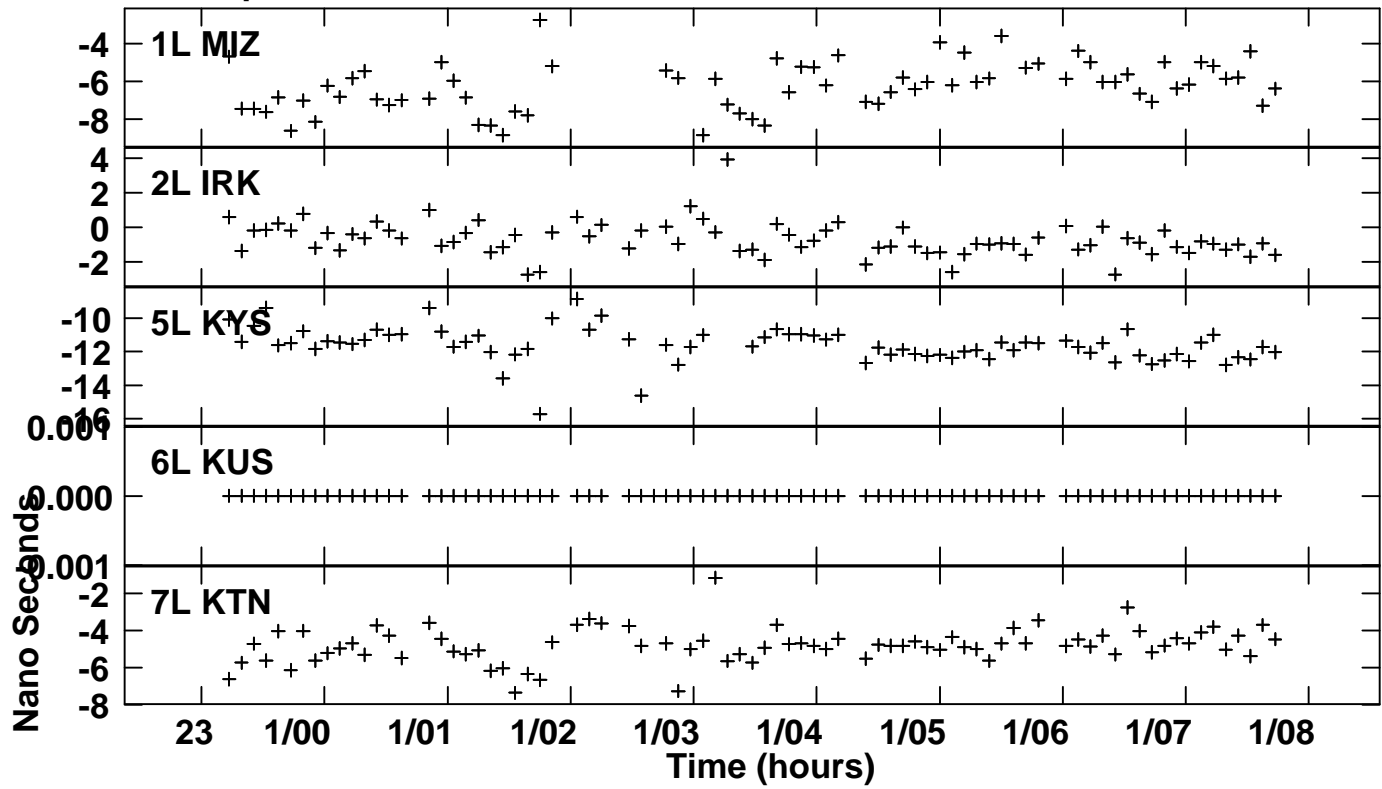
SN 2 Lpol IF 2



Plot file version 6 created 19-DEC-2016 09:39:56

Delay vs time for R16315C.MSORT.1

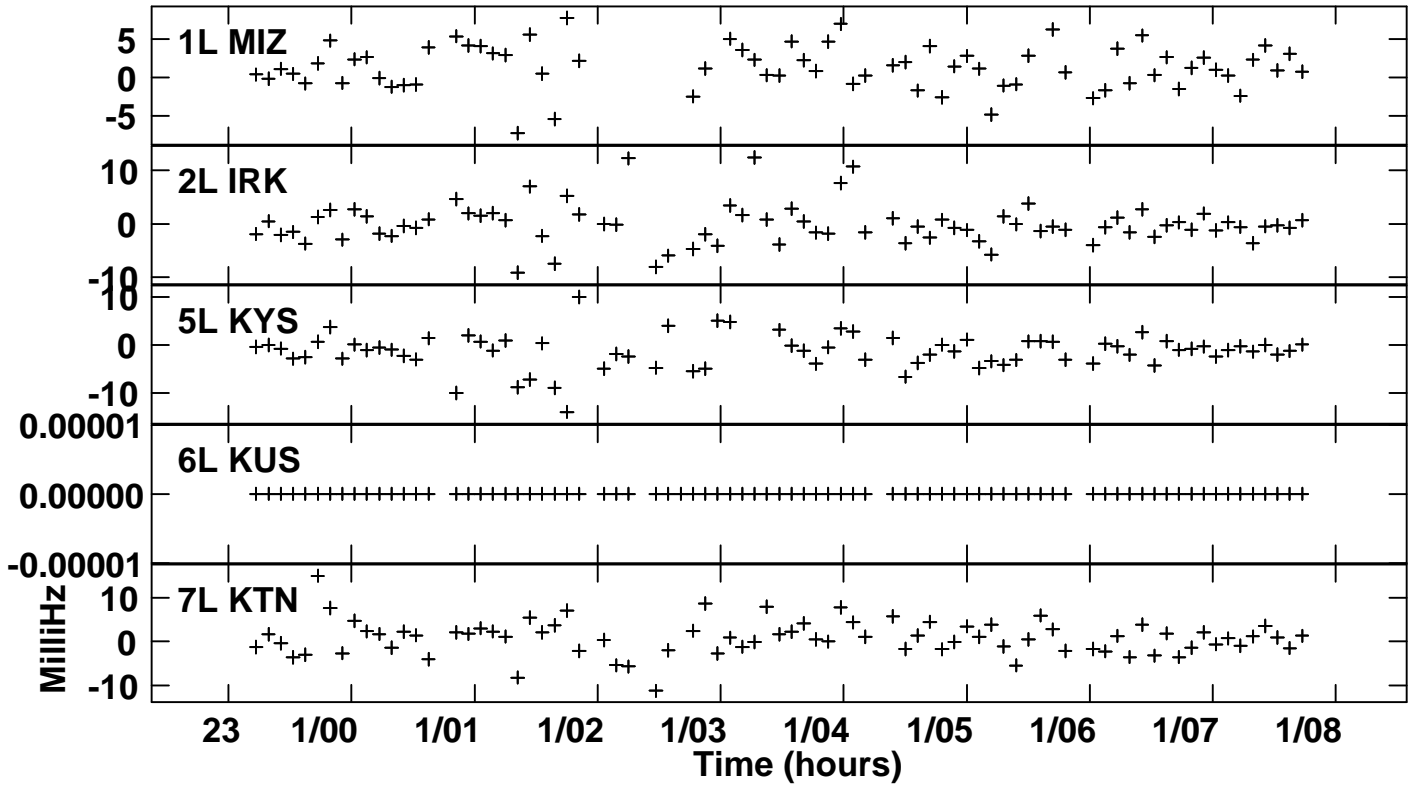
SN 2 Lpol IF 2



Plot file version 7 created 19-DEC-2016 09:40:08

Rate vs time for R16315C.MSORT.1

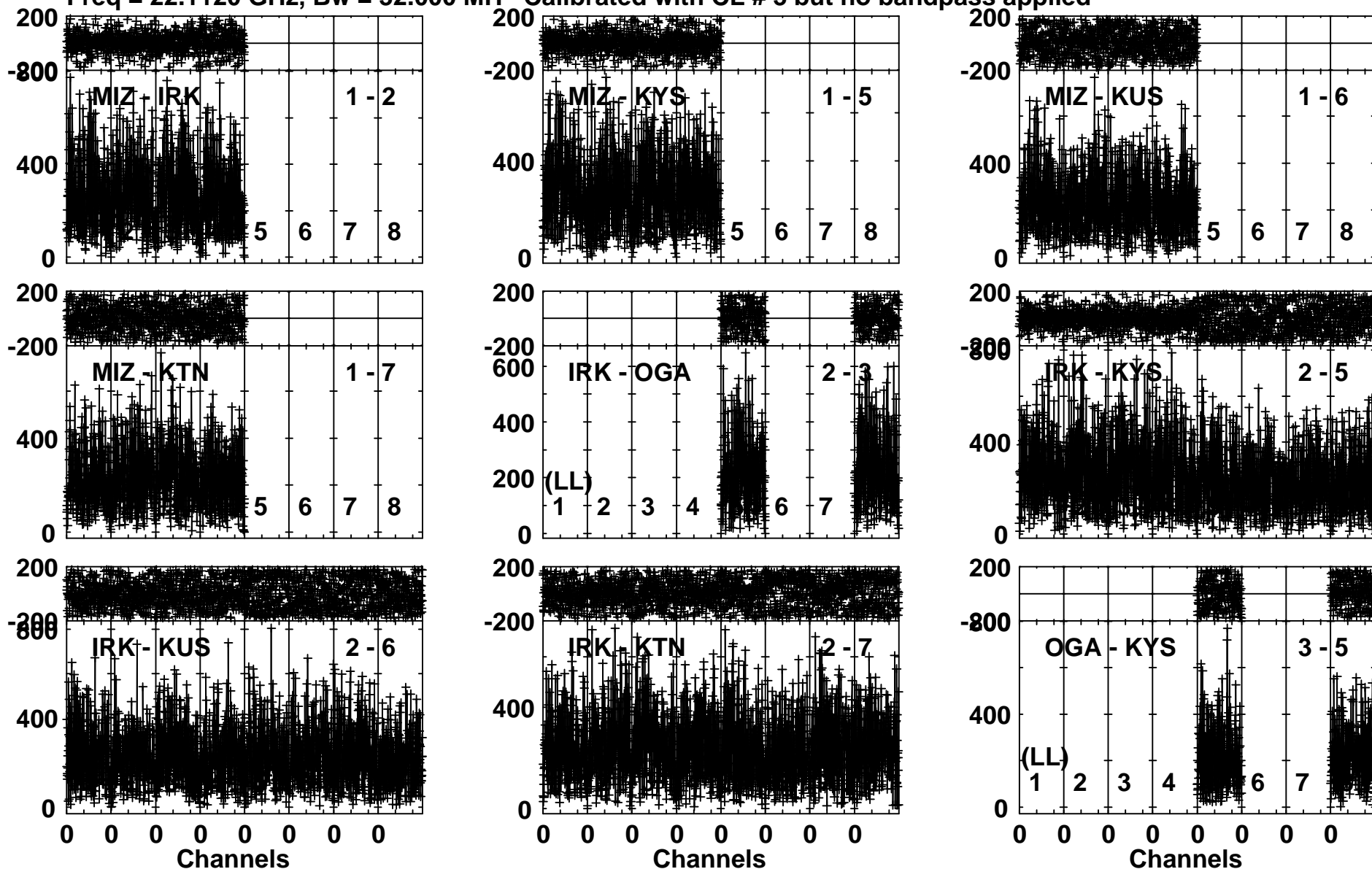
SN 2 Lpol IF 2



Plot file version 8 created 19-DEC-2016 09:40:45

J1506+3730 R16315C.MSORT.1

Freq = 22.1120 GHz, Bw = 32.000 MH Calibrated with CL # 3 but no bandpass applied



Lower frame: Micro Ampl Jy Top frame: Phas deg

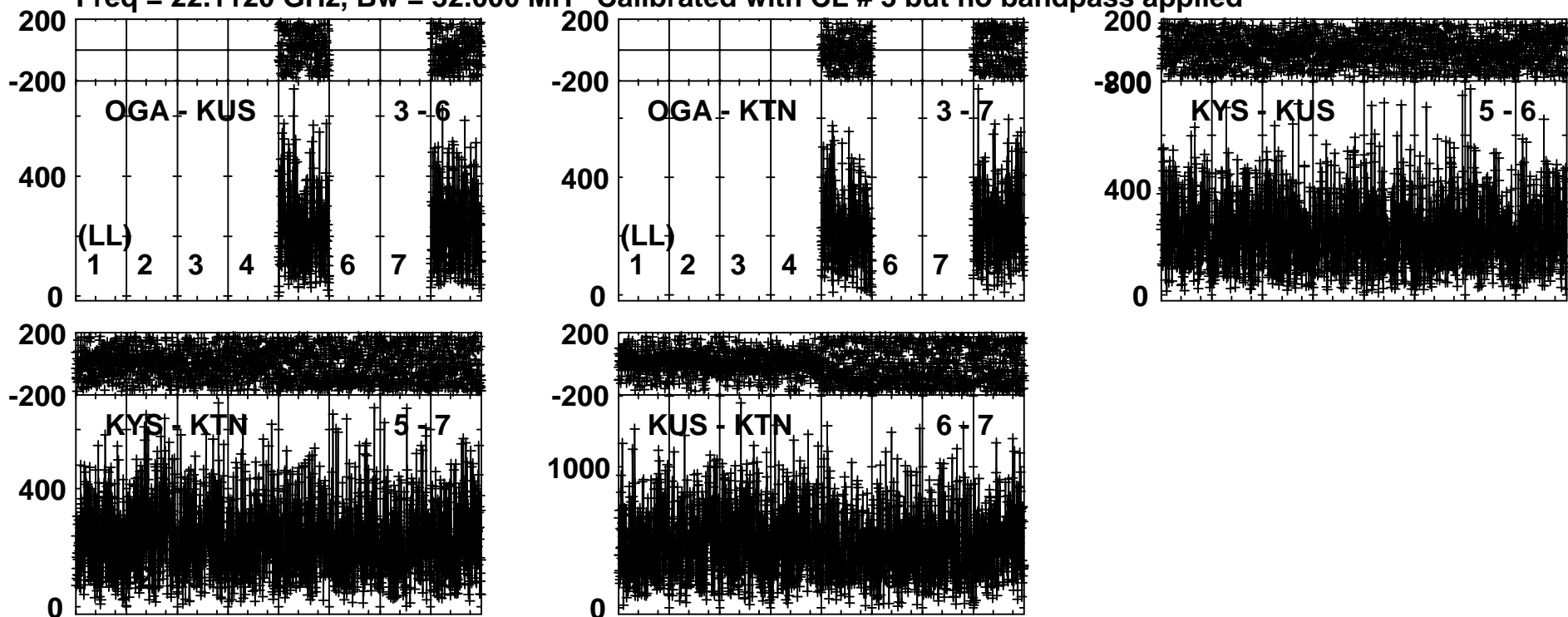
Vector averaged cross-power spectrum Several baselines displayed

Timerange: 00/23:12:31 to 00/23:14:29

Plot file version 9 created 19-DEC-2016 09:40:46

J1506+3730 R16315C.MSORT.1

Freq = 22.1120 GHz, Bw = 32.000 MH Calibrated with CL # 3 but no bandpass applied



Lower frame: Micro Ampl Jy Top frame: Phas deg

Vector averaged cross-power spectrum Several baselines displayed

Timerange: 00/23:12:31 to 00/23:14:29