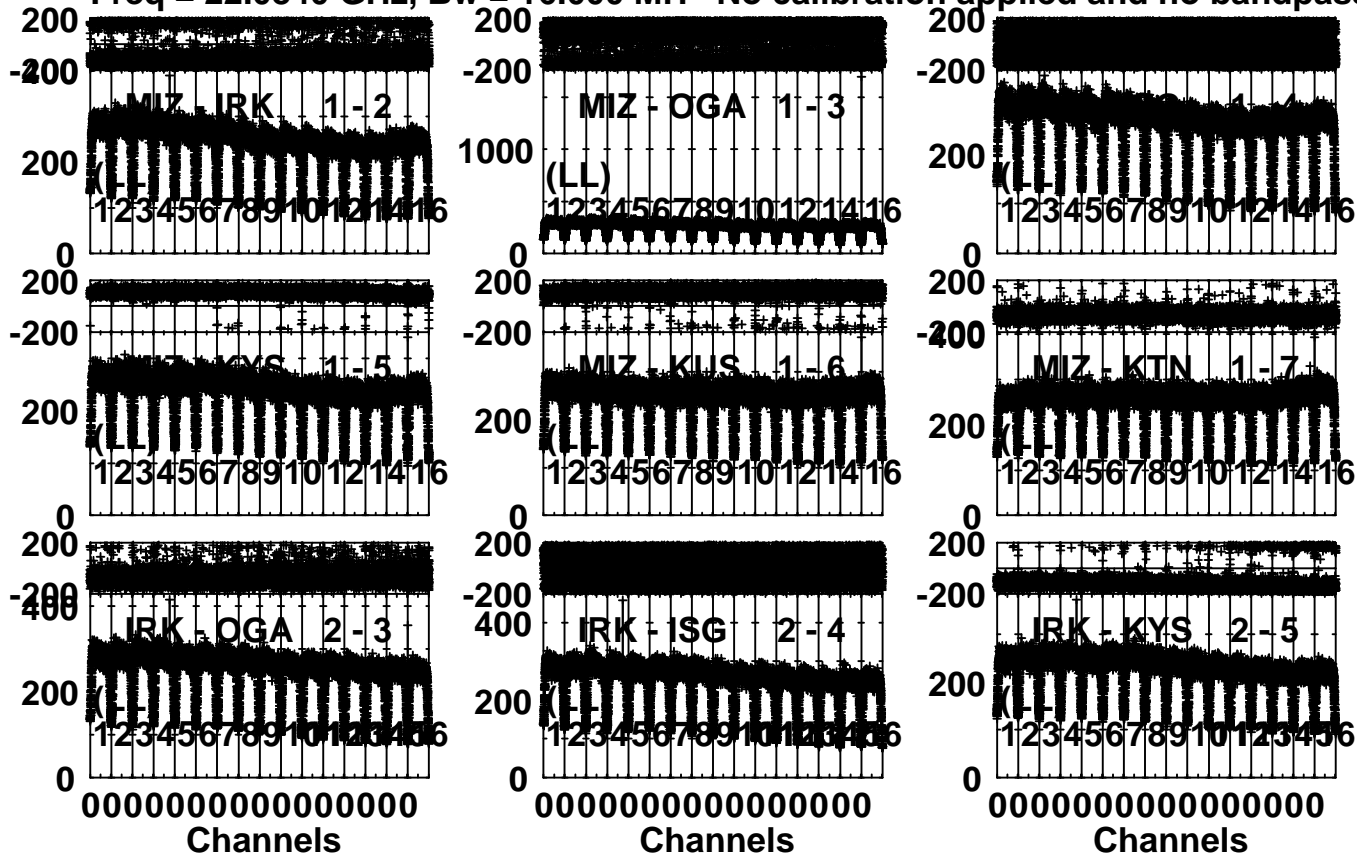


Plot file version 1 created 22-JAN-2016 15:36:16

NRAO530 R15349A.UVDATA.1

Freq = 22.0840 GHz, Bw = 16.000 MH No calibration applied and no bandpass appli



Lower frame: Milli Ampl Jy Top frame: Phas deg

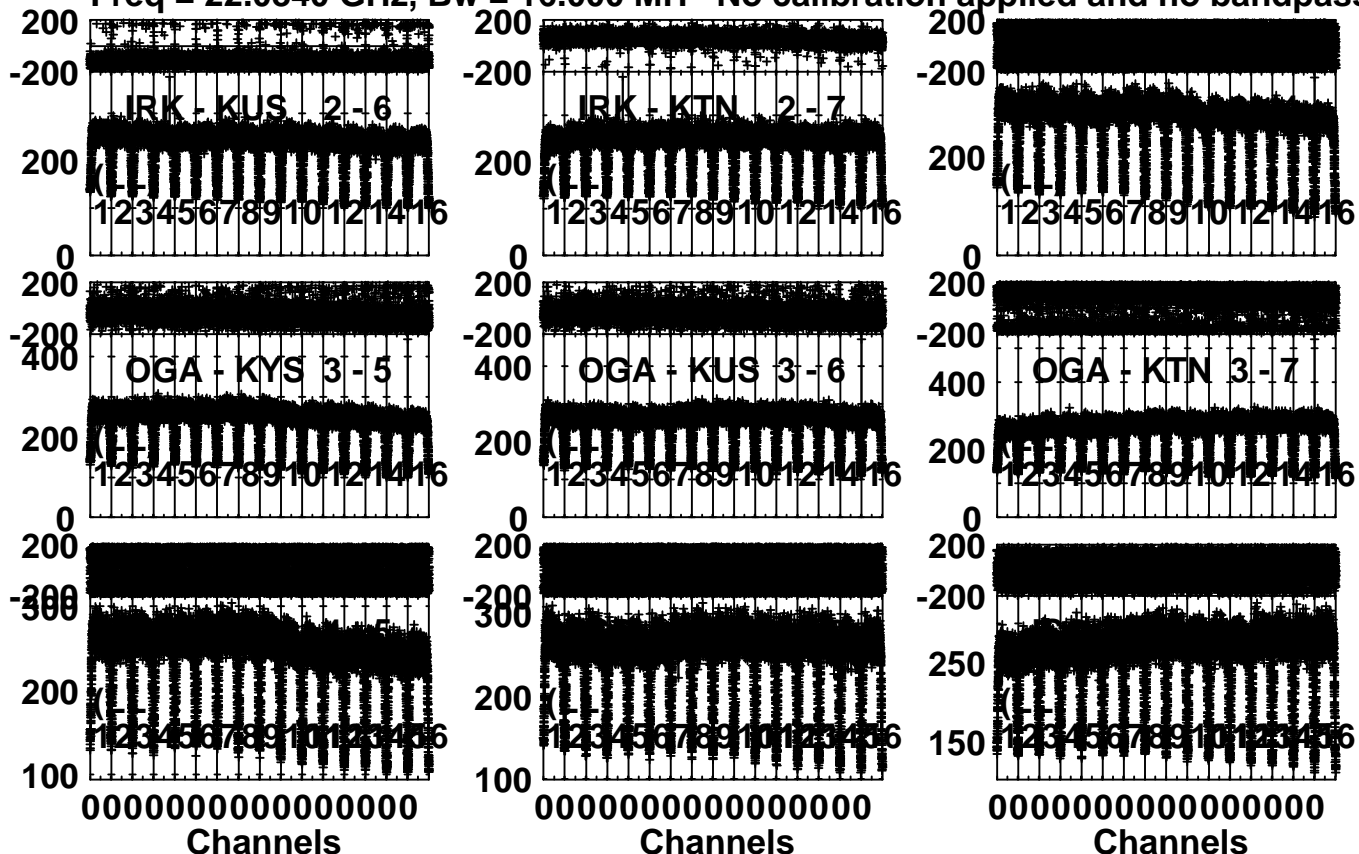
Scalar averaged cross-power spectrum Several baselines displayed

Timerange: 00/02:23:20 to 00/02:28:17

Plot file version 2 created 22-JAN-2016 15:36:21

NRAO530 R15349A.UVDATA.1

Freq = 22.0840 GHz, Bw = 16.000 MH No calibration applied and no bandpass appli



Lower frame: Milli Ampl Jy Top frame: Phas deg

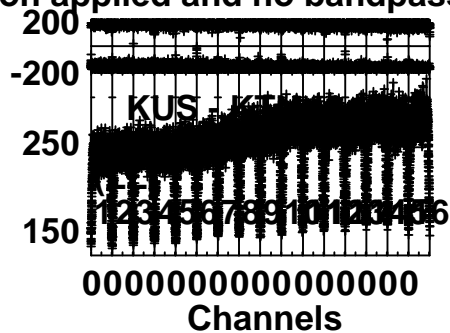
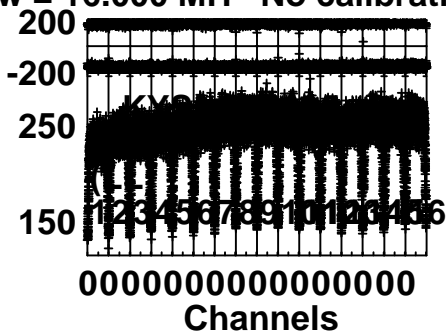
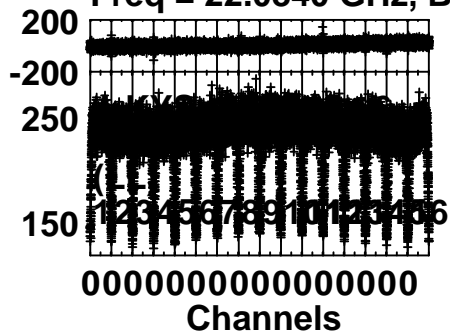
Scalar averaged cross-power spectrum Several baselines displayed

Timerange: 00/02:23:20 to 00/02:28:17

Plot file version 3 created 22-JAN-2016 15:36:25

NRAO530 R15349A.UVDATA.1

Freq = 22.0840 GHz, Bw = 16.000 MH No calibration applied and no bandpass appli

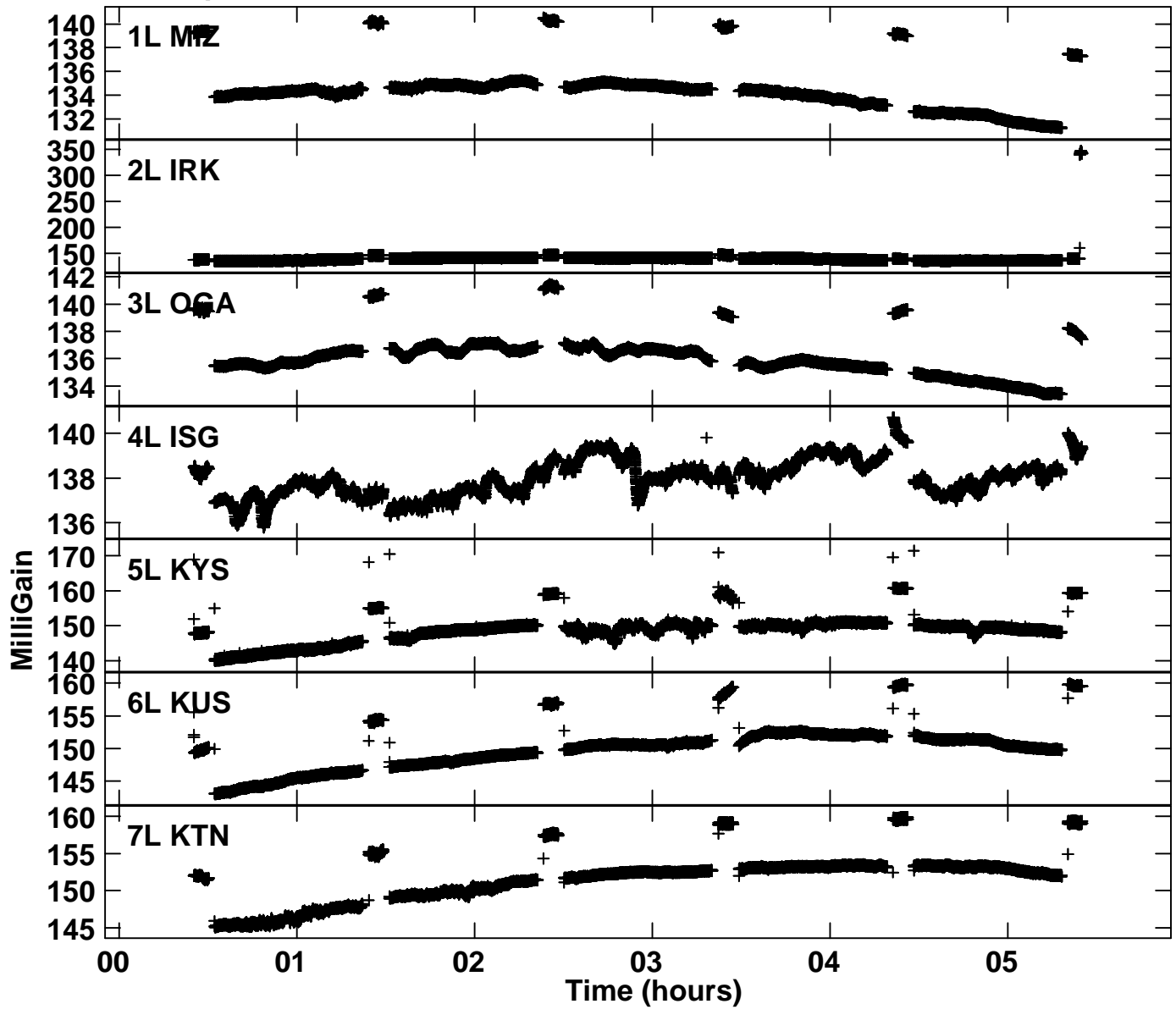


Lower frame: Milli Ampl Jy Top frame: Phas deg

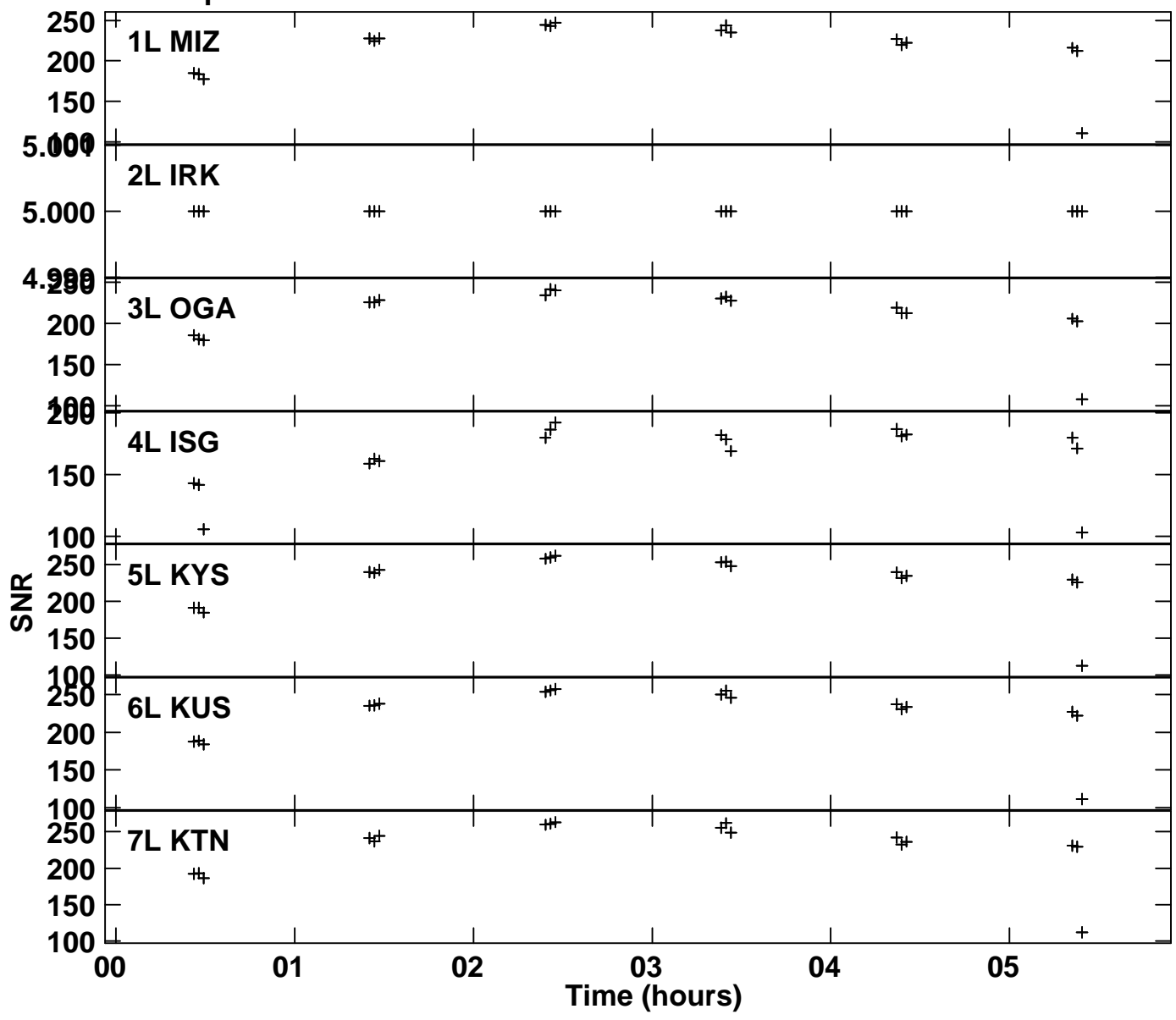
Scalar averaged cross-power spectrum Several baselines displayed

Timerange: 00/02:23:20 to 00/02:28:17

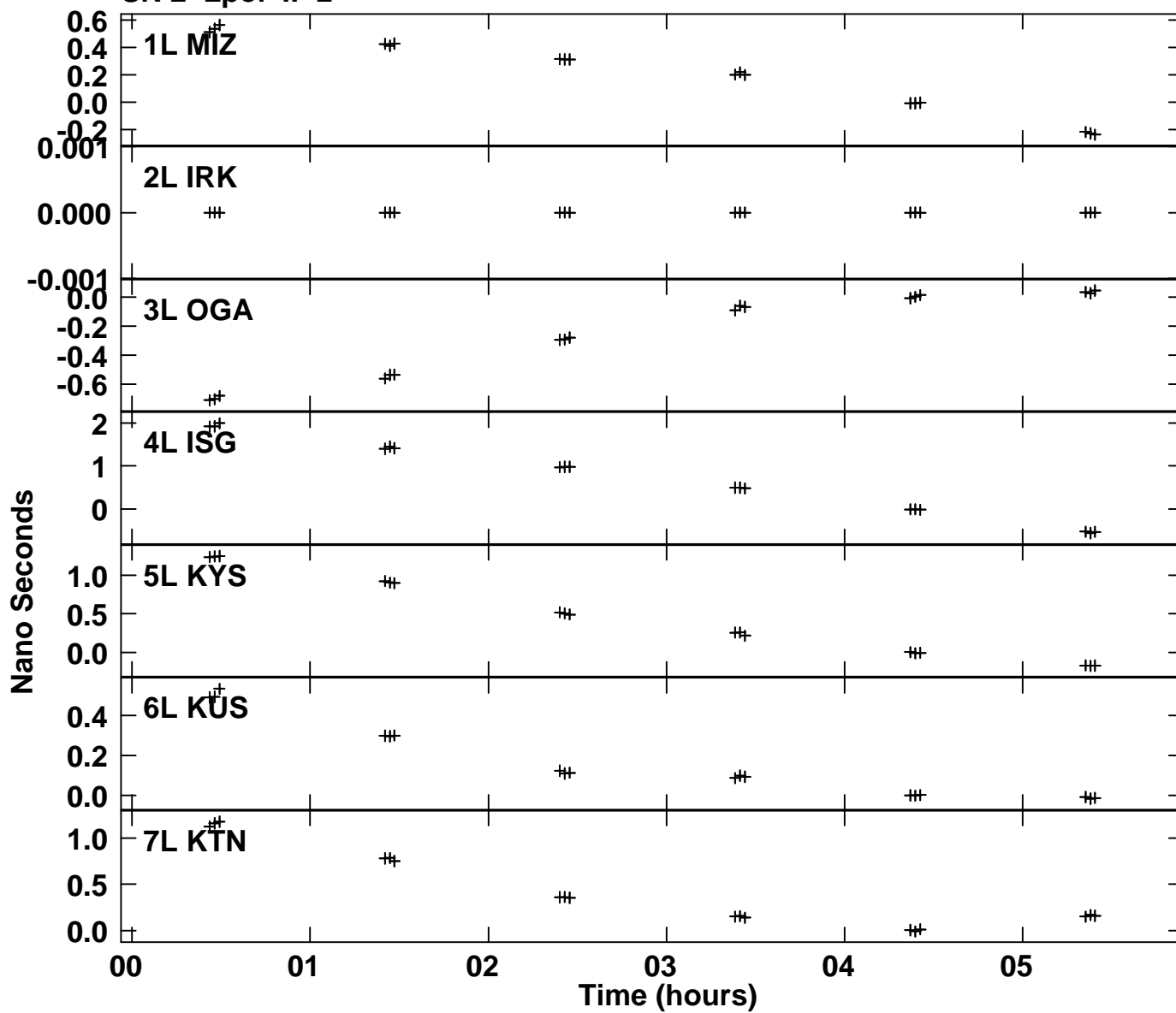
Plot file version 4 created 22-JAN-2016 15:36:42
Gain amp vs time for R15349A.UVDATA.1
SN 1 Lpol IF 2



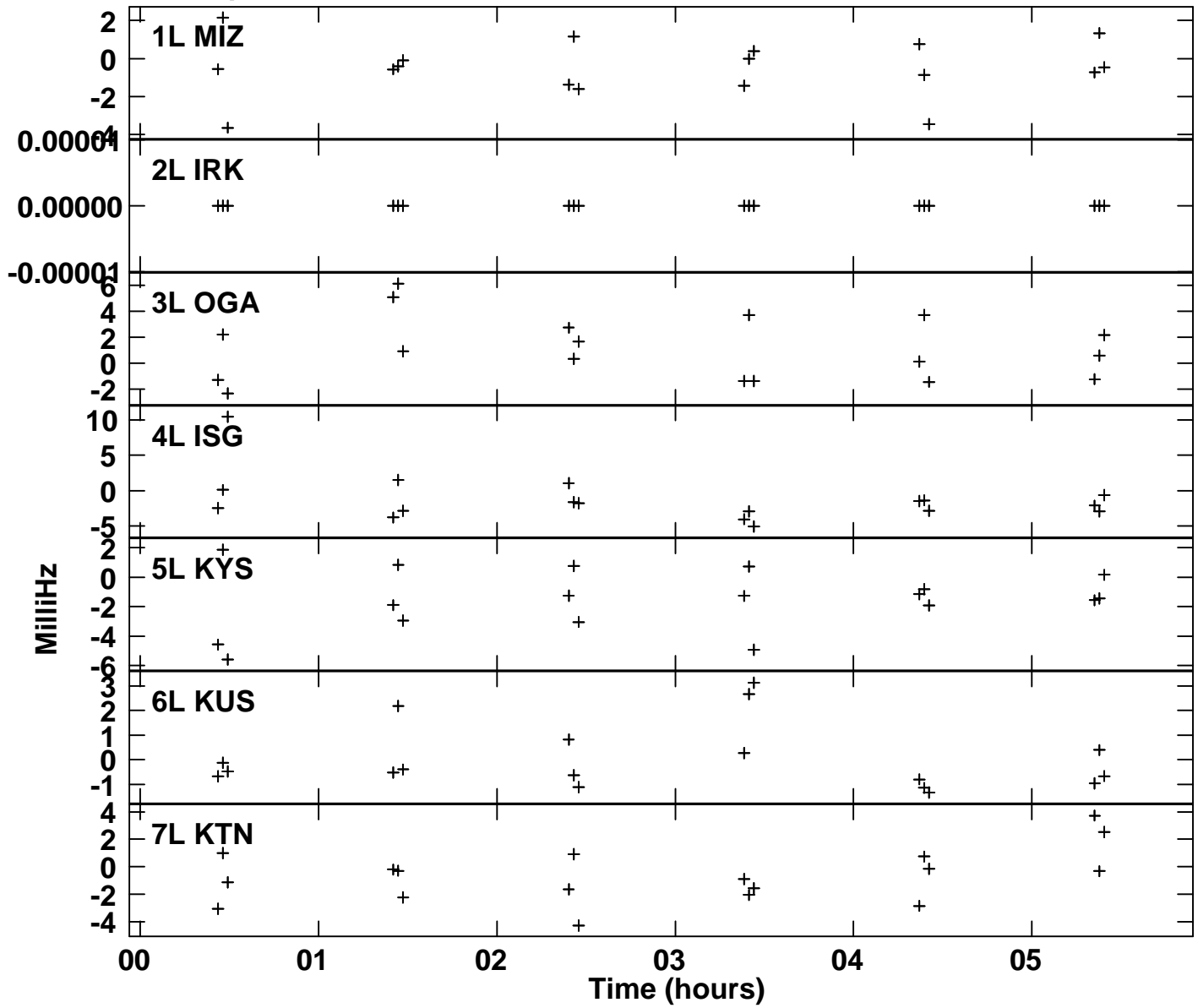
Plot file version 5 created 22-JAN-2016 15:36:42
 SNR vs time for R15349A.UVDATA.1
 SN 2 Lpol IF 2



Plot file version 6 created 22-JAN-2016 15:36:43
Delay vs time for R15349A.UVDATA.1
SN 2 Lpol IF 2



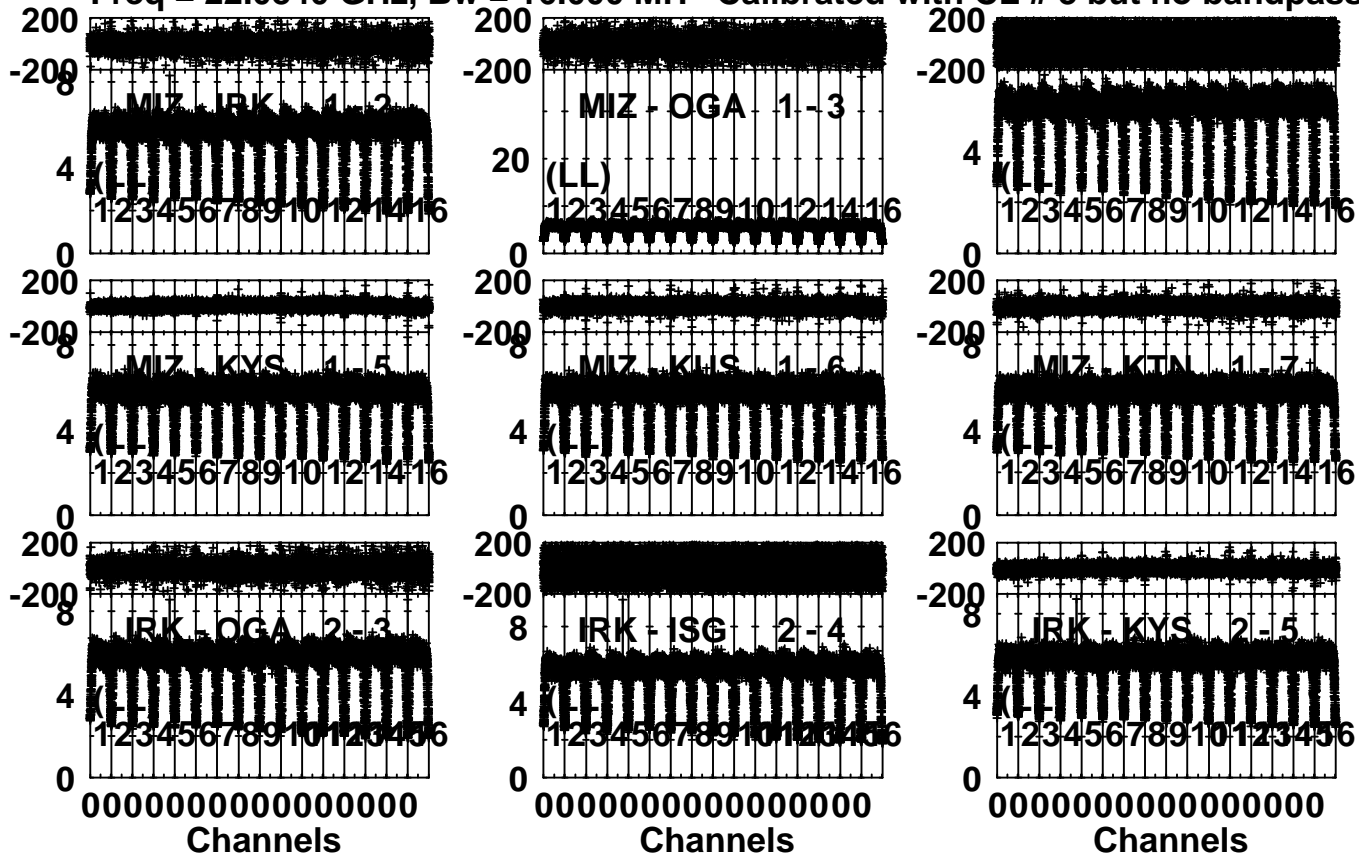
Plot file version 7 created 22-JAN-2016 15:36:43
Rate vs time for R15349A.UVDATA.1
SN 2 Lpol IF 2



Plot file version 8 created 22-JAN-2016 15:36:43

NRAO530 R15349A.UVDATA.1

Freq = 22.0840 GHz, Bw = 16.000 MH Calibrated with CL # 3 but no bandpass applied



Lower frame: Milli Ampl Jy Top frame: Phas deg

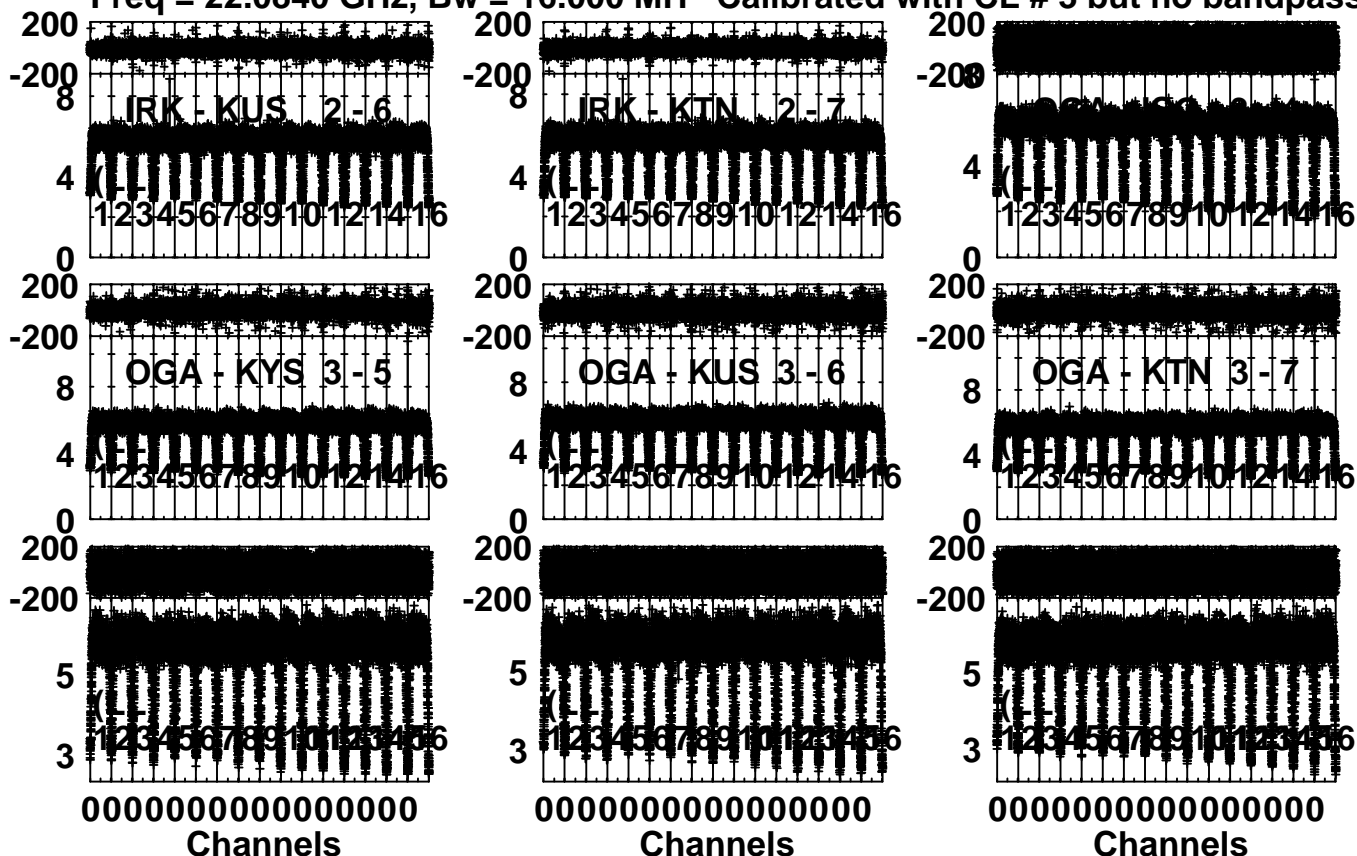
Scalar averaged cross-power spectrum Several baselines displayed

Timerange: 00/02:23:20 to 00/02:28:17

Plot file version 9 created 22-JAN-2016 15:36:50

NRAO530 R15349A.UVDATA.1

Freq = 22.0840 GHz, Bw = 16.000 MH Calibrated with CL # 3 but no bandpass applied



Lower frame: Milli Ampl Jy Top frame: Phas deg

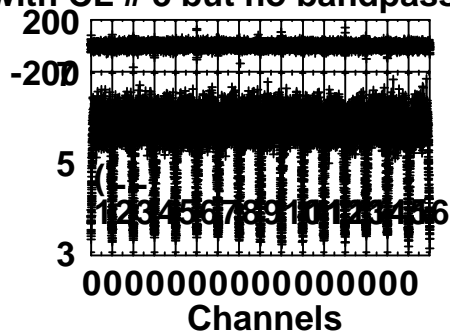
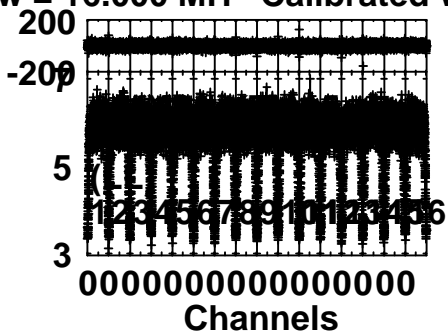
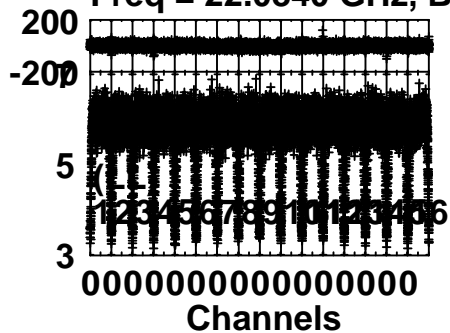
Scalar averaged cross-power spectrum Several baselines displayed

Timerange: 00/02:23:20 to 00/02:28:17

Plot file version 10 created 22-JAN-2016 15:36:56

NRAO530 R15349A.UVDATA.1

Freq = 22.0840 GHz, Bw = 16.000 MH Calibrated with CL # 3 but no bandpass applie



Lower frame: Milli Ampl Jy Top frame: Phas deg

Scalar averaged cross-power spectrum Several baselines displayed

Timerange: 00/02:23:20 to 00/02:28:17