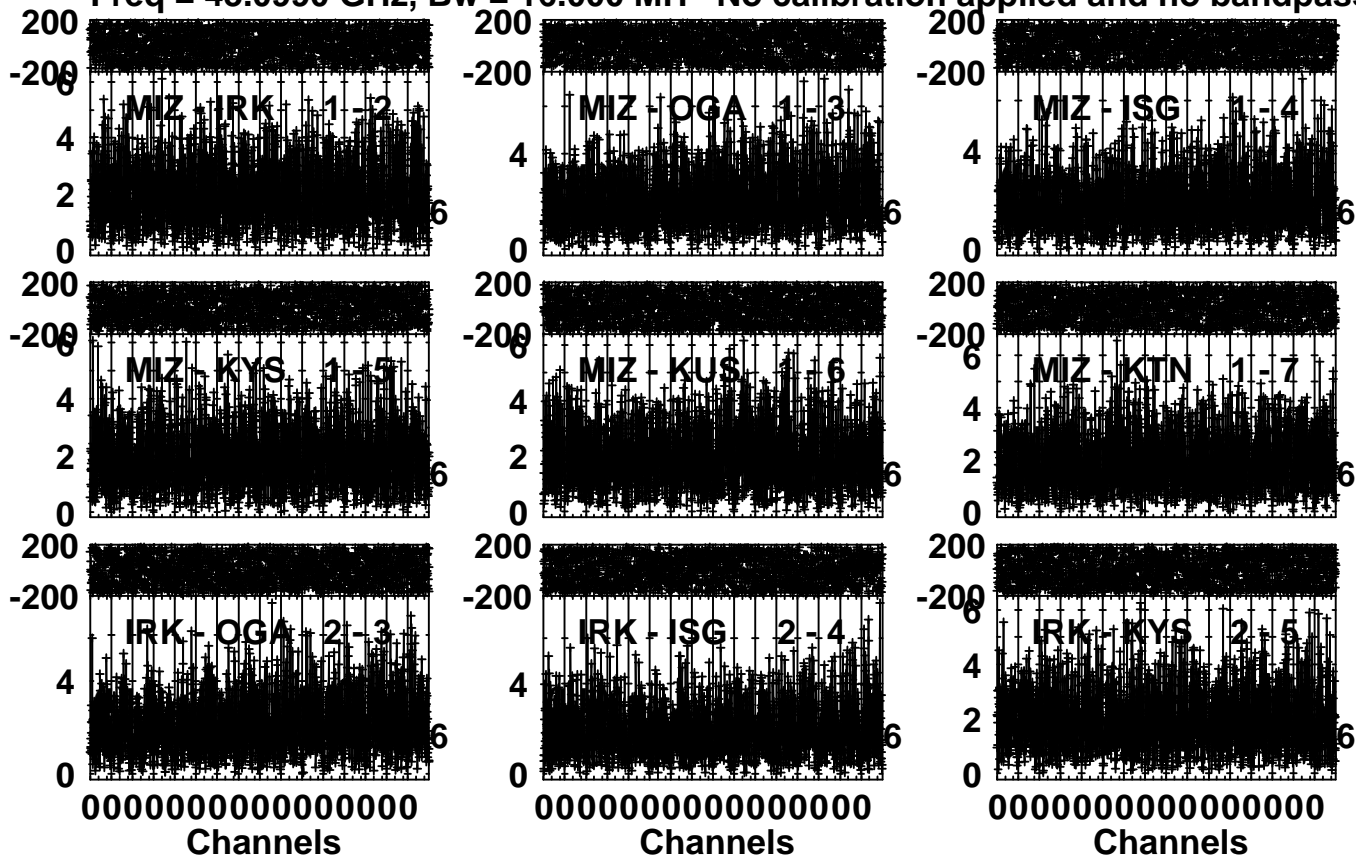


Plot file version 1 created 04-DEC-2015 14:55:57

3C84 R15317A.MSORT.1

Freq = 43.0990 GHz, Bw = 16.000 MH No calibration applied and no bandpass appli



Lower frame: Milli Ampl Jy Top frame: Phas deg

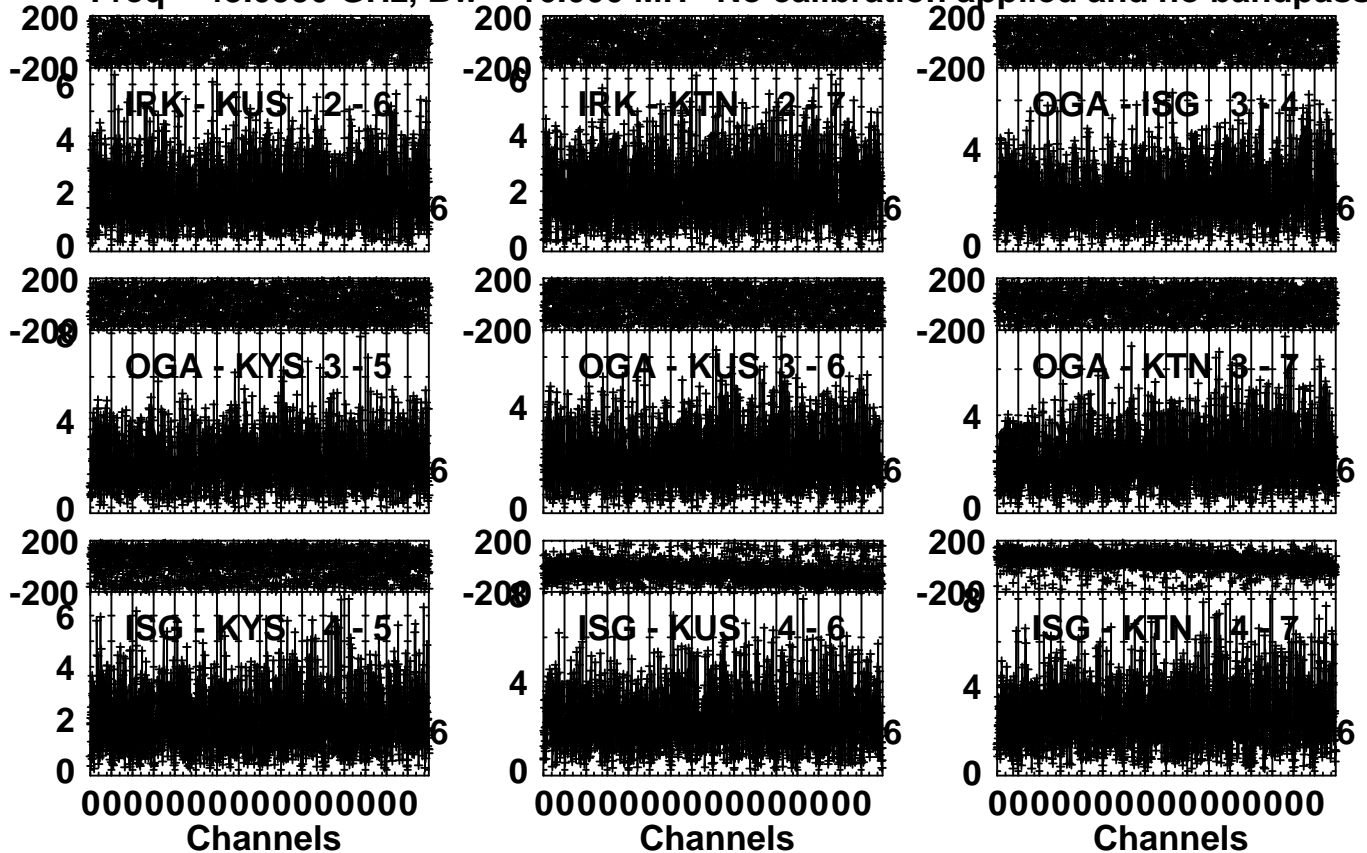
Vector averaged cross-power spectrum Several baselines displayed

Timerange: 00/12:00:01 to 00/12:59:59

Plot file version 2 created 04-DEC-2015 14:56:02

3C84 R15317A.MSORT.1

Freq = 43.0990 GHz, Bw = 16.000 MH No calibration applied and no bandpass appli



Lower frame: Milli Ampl Jy Top frame: Phas deg

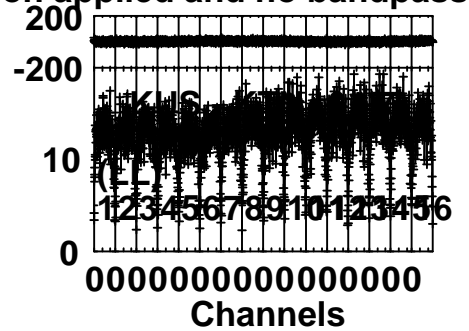
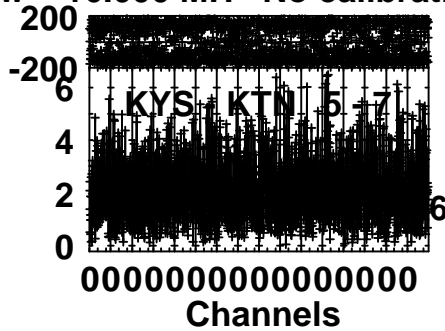
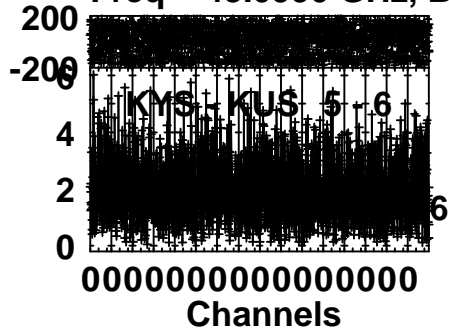
Vector averaged cross-power spectrum Several baselines displayed

Timerange: 00/12:00:01 to 00/12:59:59

Plot file version 3 created 04-DEC-2015 14:56:06

3C84 R15317A.MSORT.1

Freq = 43.0990 GHz, Bw = 16.000 MH No calibration applied and no bandpass appli

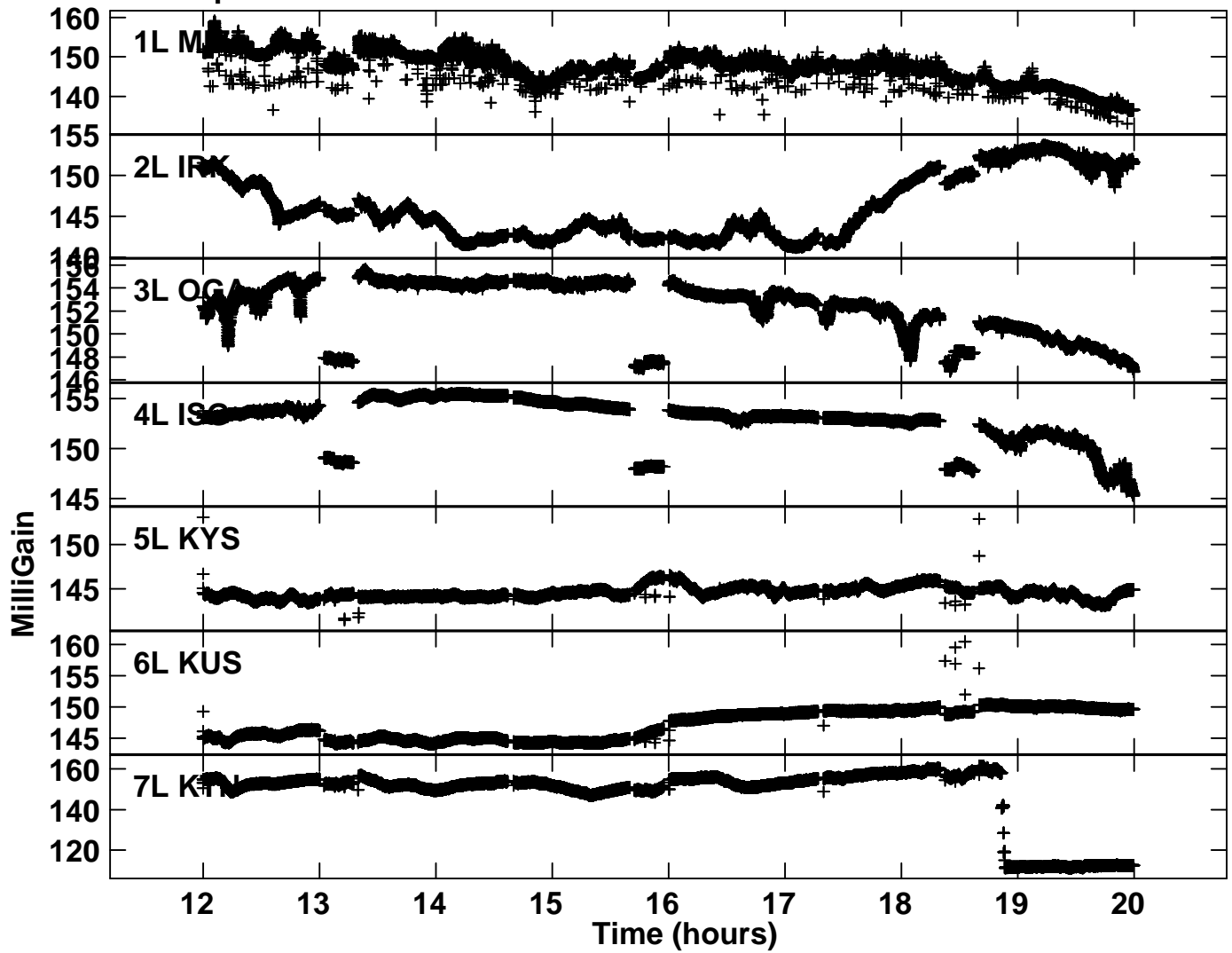


Lower frame: Milli Ampl Jy Top frame: Phas deg

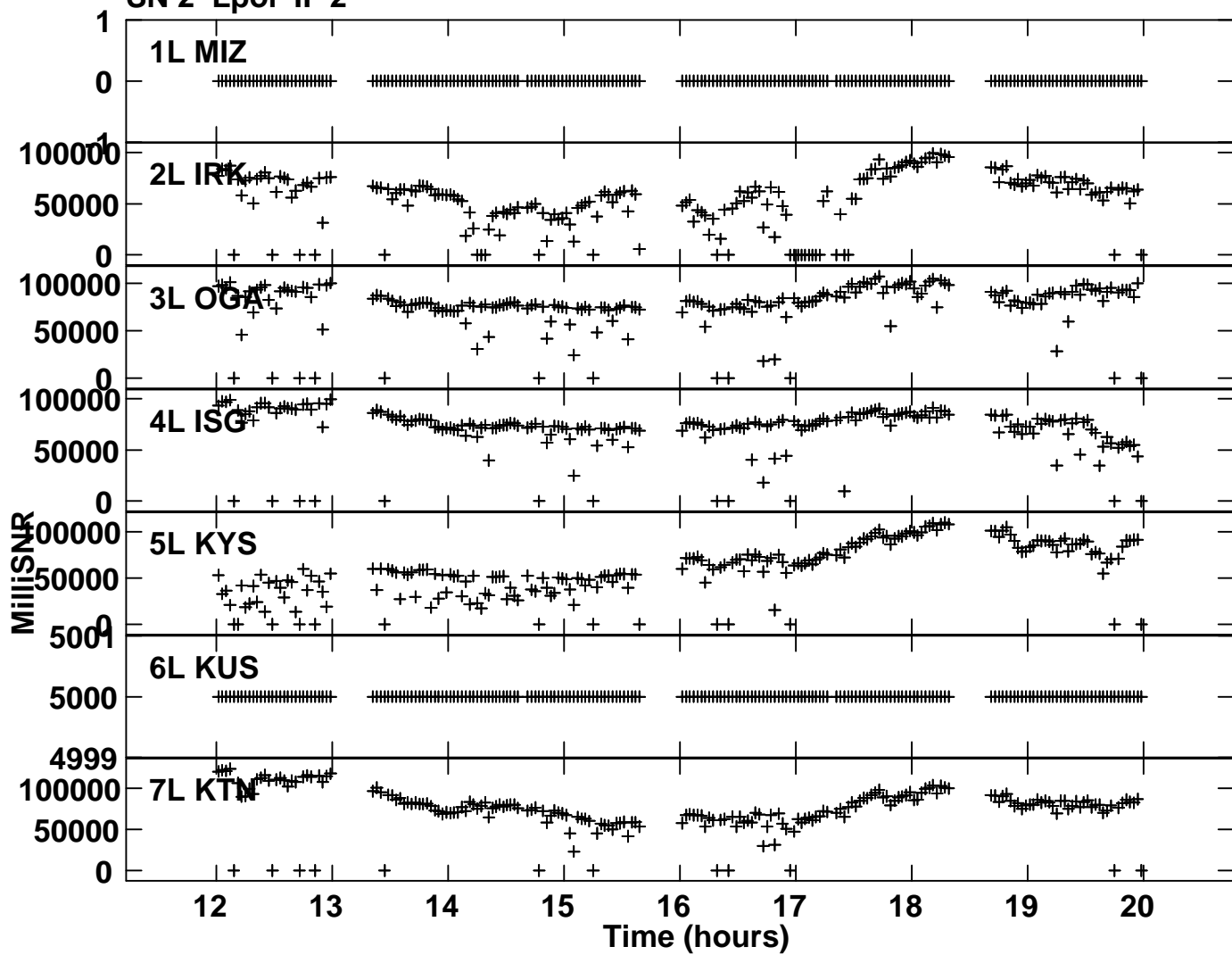
Vector averaged cross-power spectrum Several baselines displayed

Timerange: 00/12:00:01 to 00/12:59:59

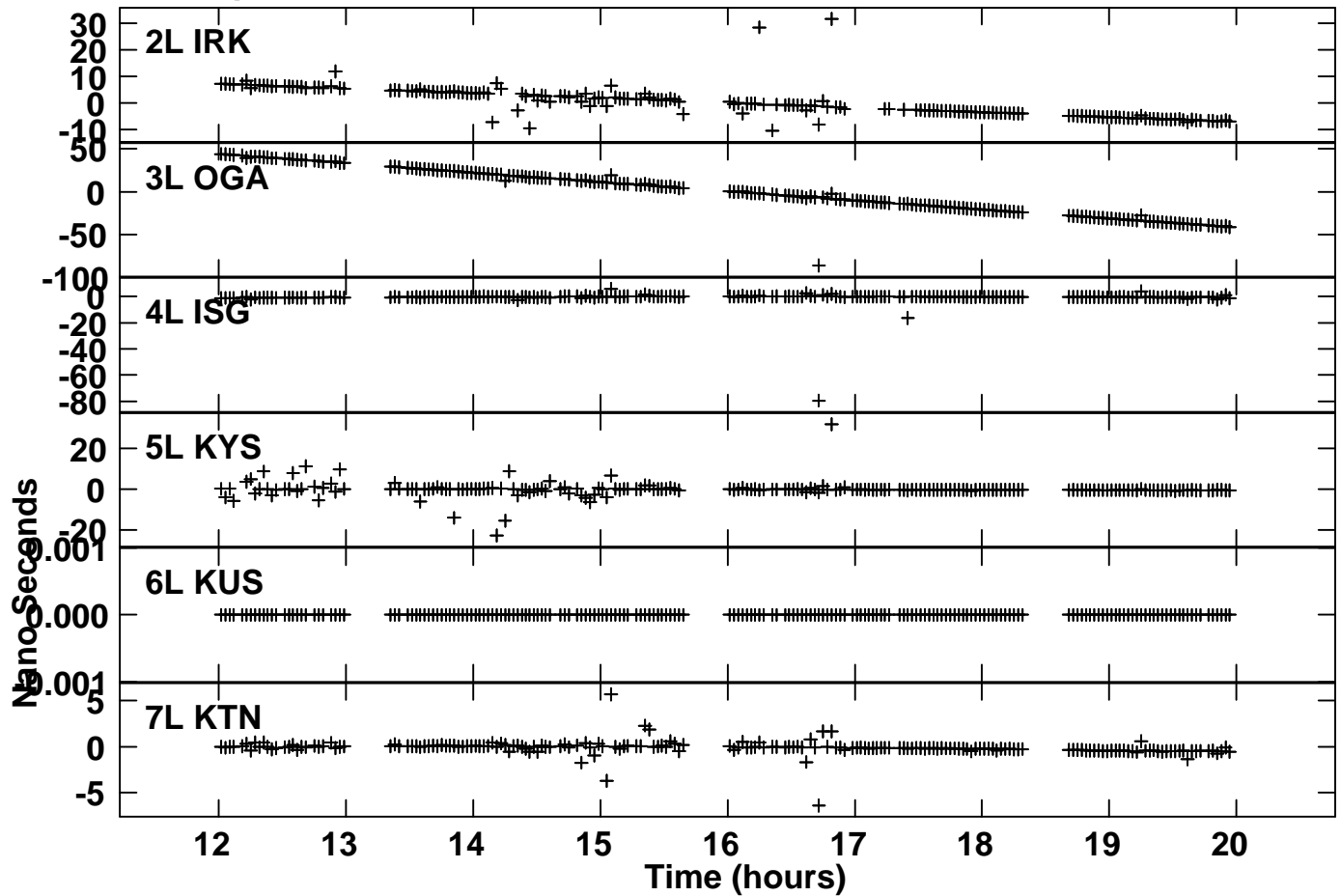
Plot file version 4 created 04-DEC-2015 14:58:08  
Gain amp vs time for R15317A.MSORT.1  
SN 1 Lpol IF 2



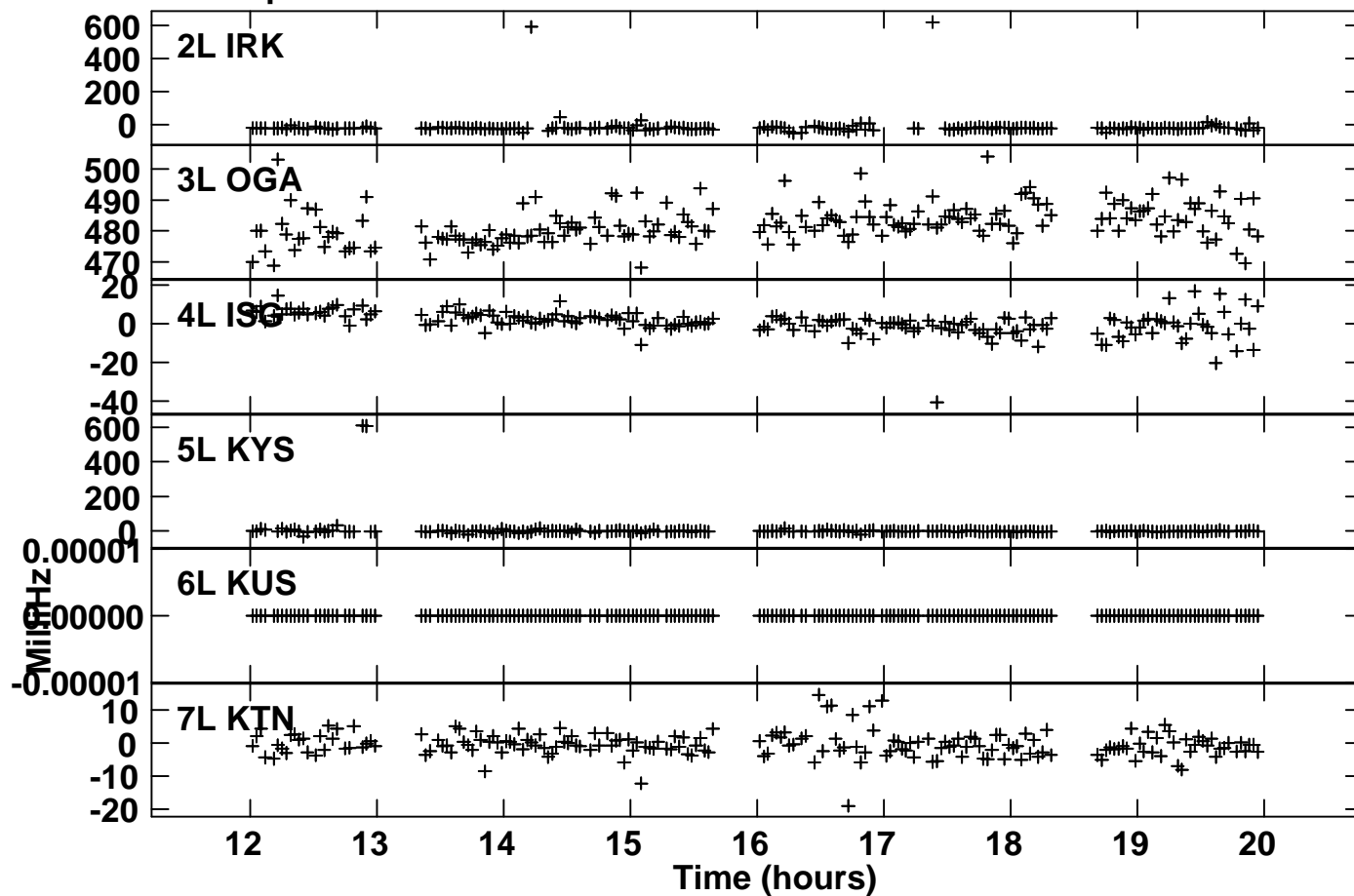
Plot file version 5 created 07-DEC-2015 11:22:44  
SNR vs time for R15317A.MSORT.1  
SN 2 Lpol IF 2



Plot file version 6 created 07-DEC-2015 11:22:55  
Delay vs time for R15317A.MSORT.1  
SN 2 Lpol IF 2



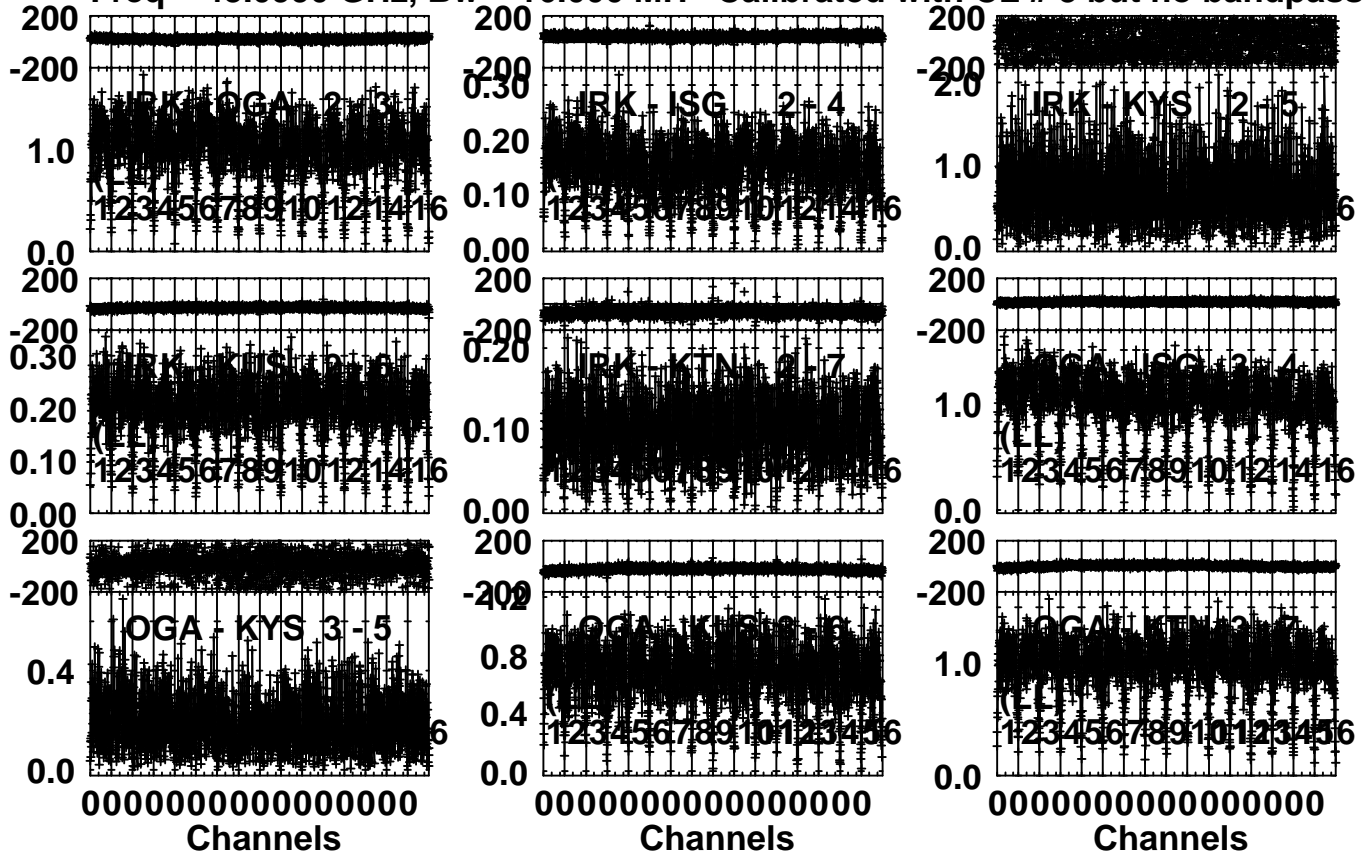
Plot file version 7 created 07-DEC-2015 11:22:59  
Rate vs time for R15317A.MSORT.1  
SN 2 Lpol IF 2



Plot file version 8 created 07-DEC-2015 11:28:48

3C84 R15317A.MSORT.1

Freq = 43.0990 GHz, Bw = 16.000 MH Calibrated with CL # 3 but no bandpass applied



Lower frame: Milli Ampl Jy Top frame: Phas deg

Vector averaged cross-power spectrum Several baselines displayed

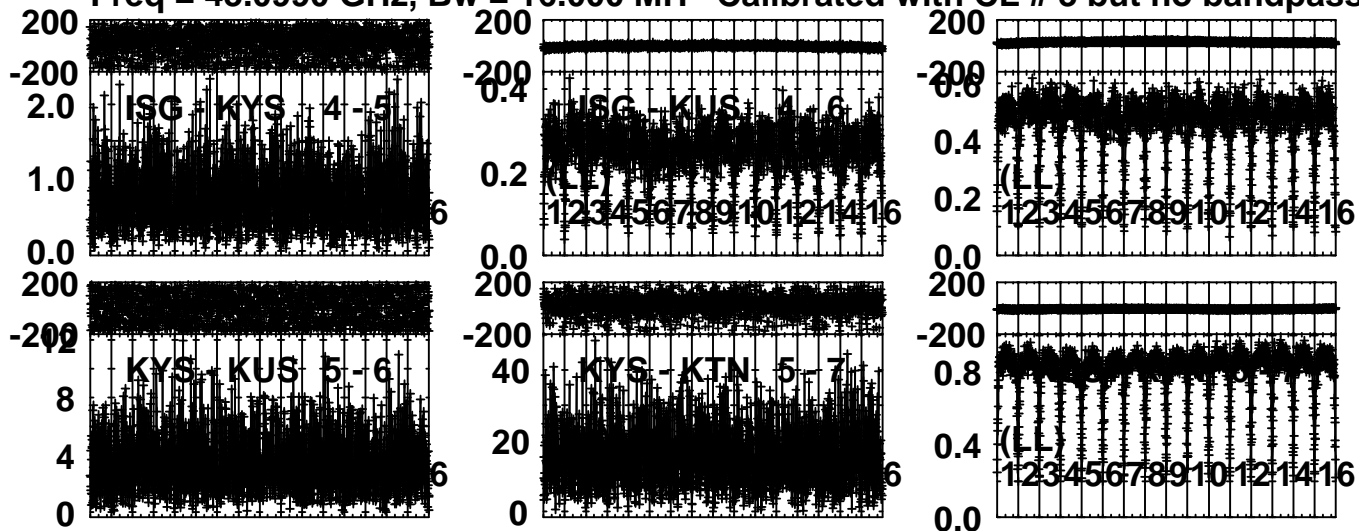
Timerange: 00/12:00:01 to 00/12:59:59



Plot file version 9 created 07-DEC-2015 11:30:15

3C84 R15317A.MSORT.1

Freq = 43.0990 GHz, Bw = 16.000 MH Calibrated with CL # 3 but no bandpass applied



Lower frame: Milli Ampl Jy Top frame: Phas deg

Vector averaged cross-power spectrum Several baselines displayed

Timerange: 00/12:00:01 to 00/12:59:59