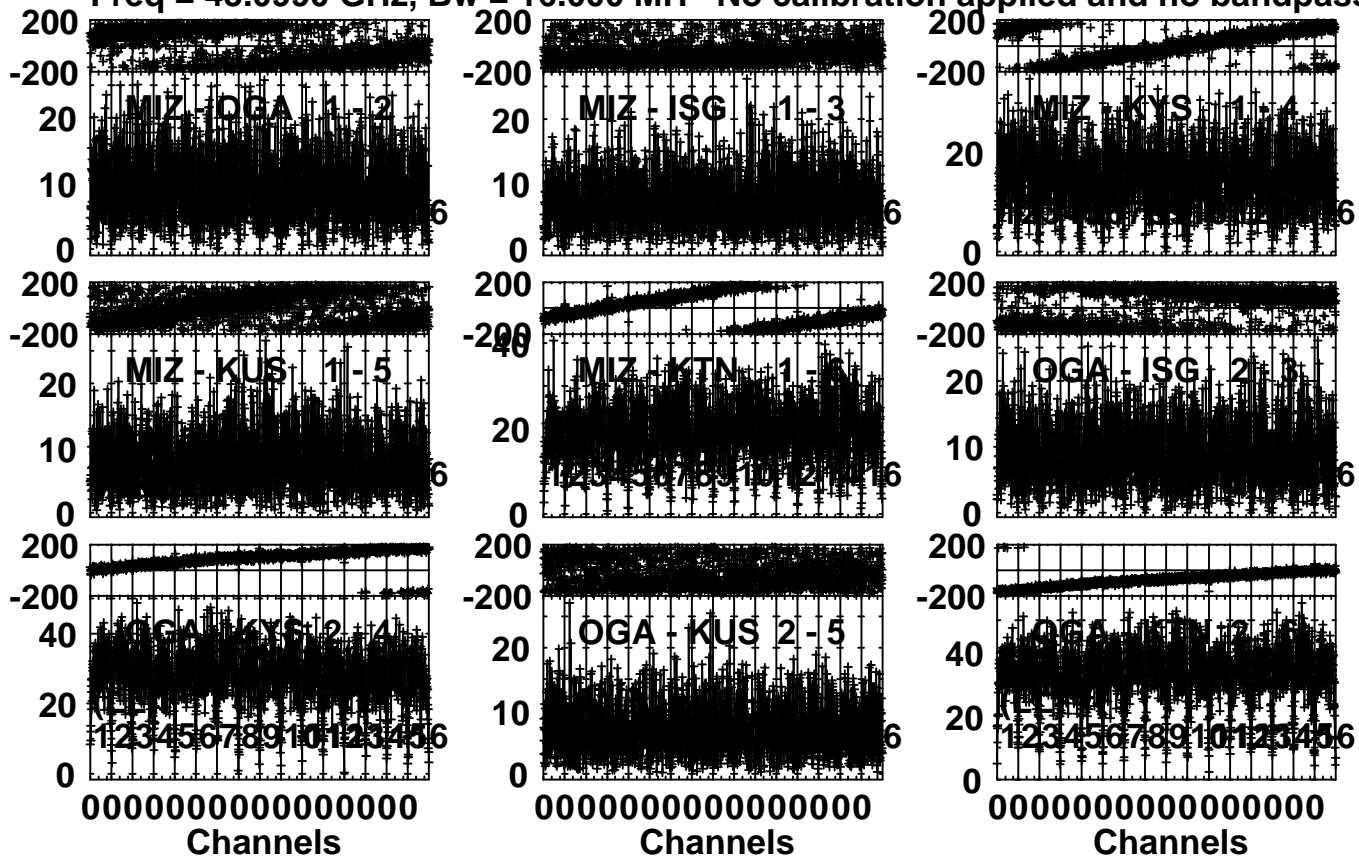


Plot file version 1 created 06-NOV-2015 16:53:37

3C84 R15287A.MSORT.1

Freq = 43.0990 GHz, Bw = 16.000 MH No calibration applied and no bandpass appli



Lower frame: Milli Ampl Jy Top frame: Phas deg

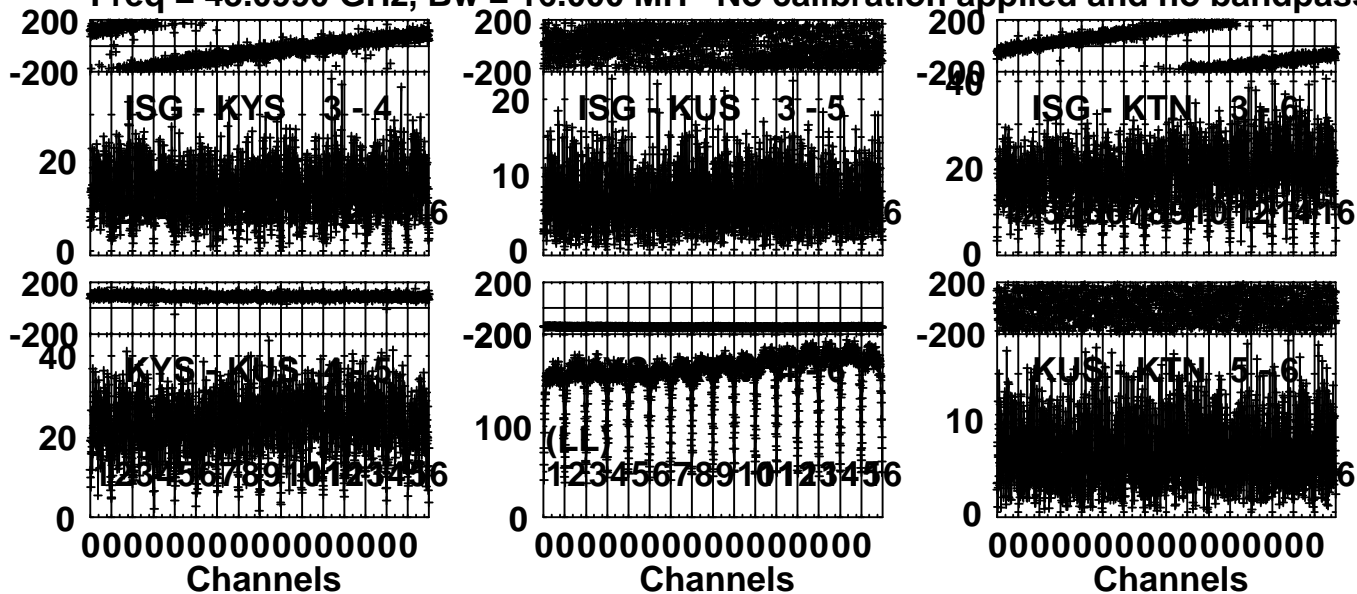
Vector averaged cross-power spectrum Several baselines displayed

Timerange: 00/19:00:01 to 00/19:04:59

Plot file version 2 created 06-NOV-2015 16:53:38

3C84 R15287A.MSORT.1

Freq = 43.0990 GHz, Bw = 16.000 MH No calibration applied and no bandpass appli

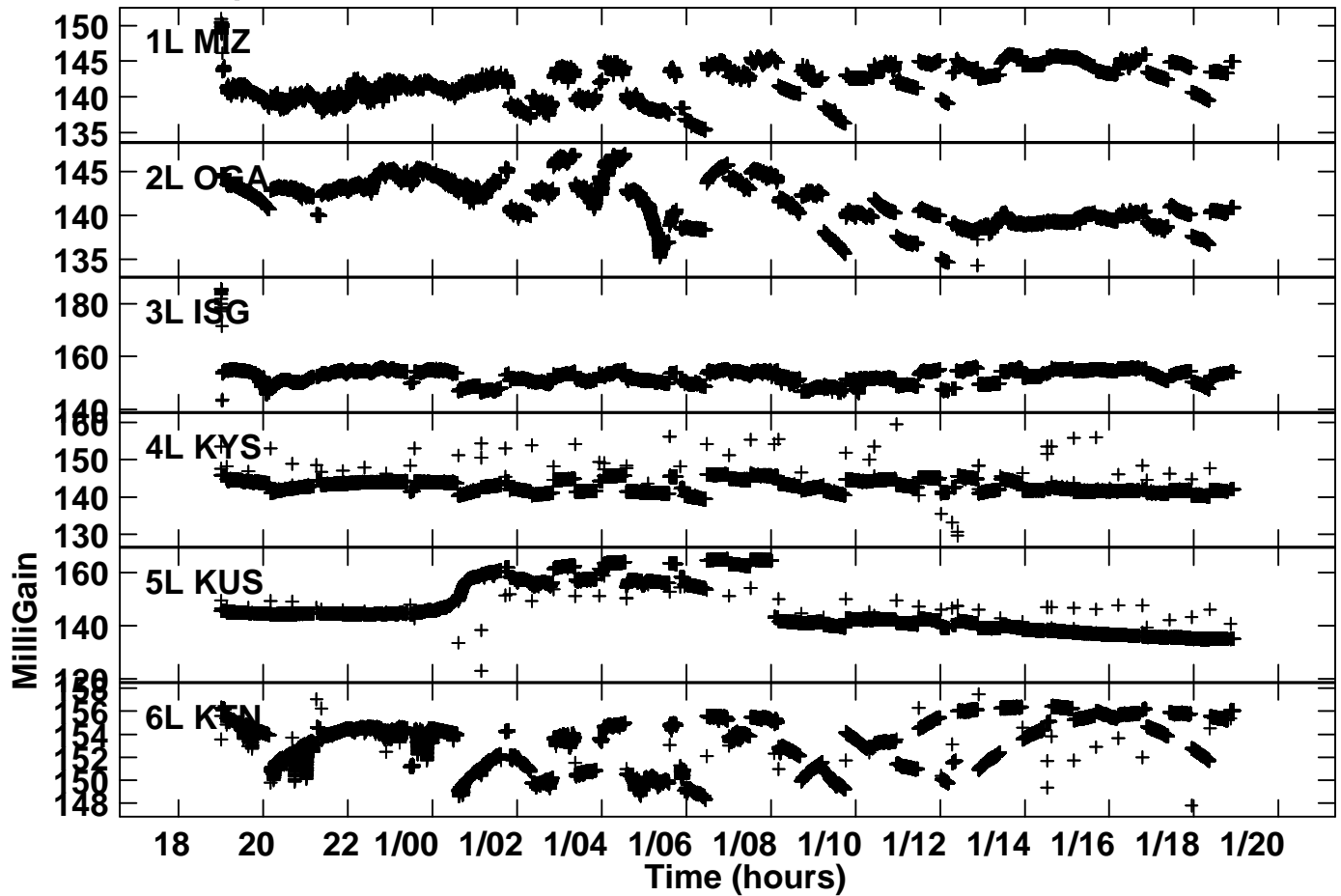


Lower frame: Milli Ampl Jy Top frame: Phas deg

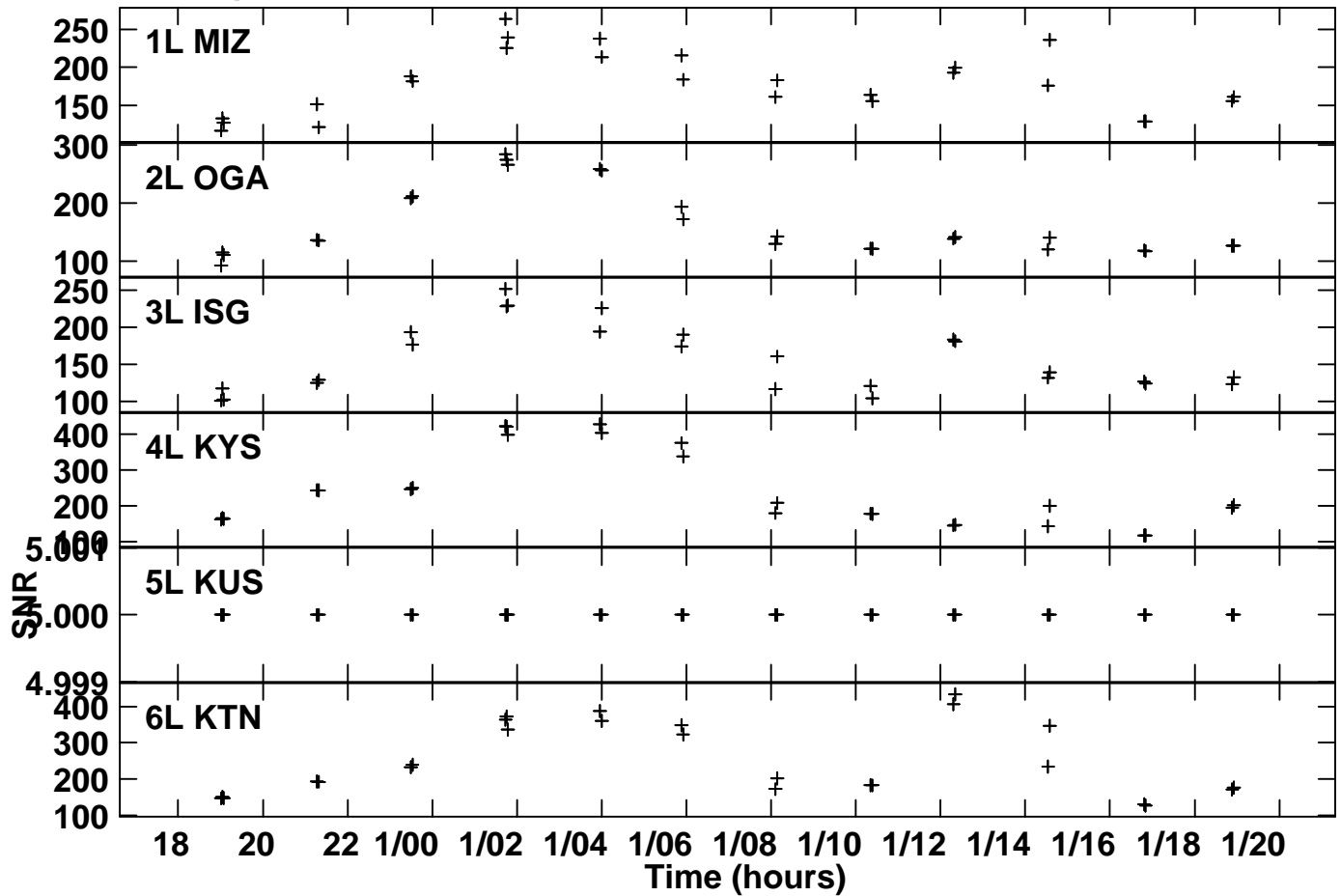
Vector averaged cross-power spectrum Several baselines displayed

Timerange: 00/19:00:01 to 00/19:04:59

Plot file version 3 created 06-NOV-2015 16:54:29
Gain amp vs time for R15287A.MSORT.1
SN 1 Lpol IF 2



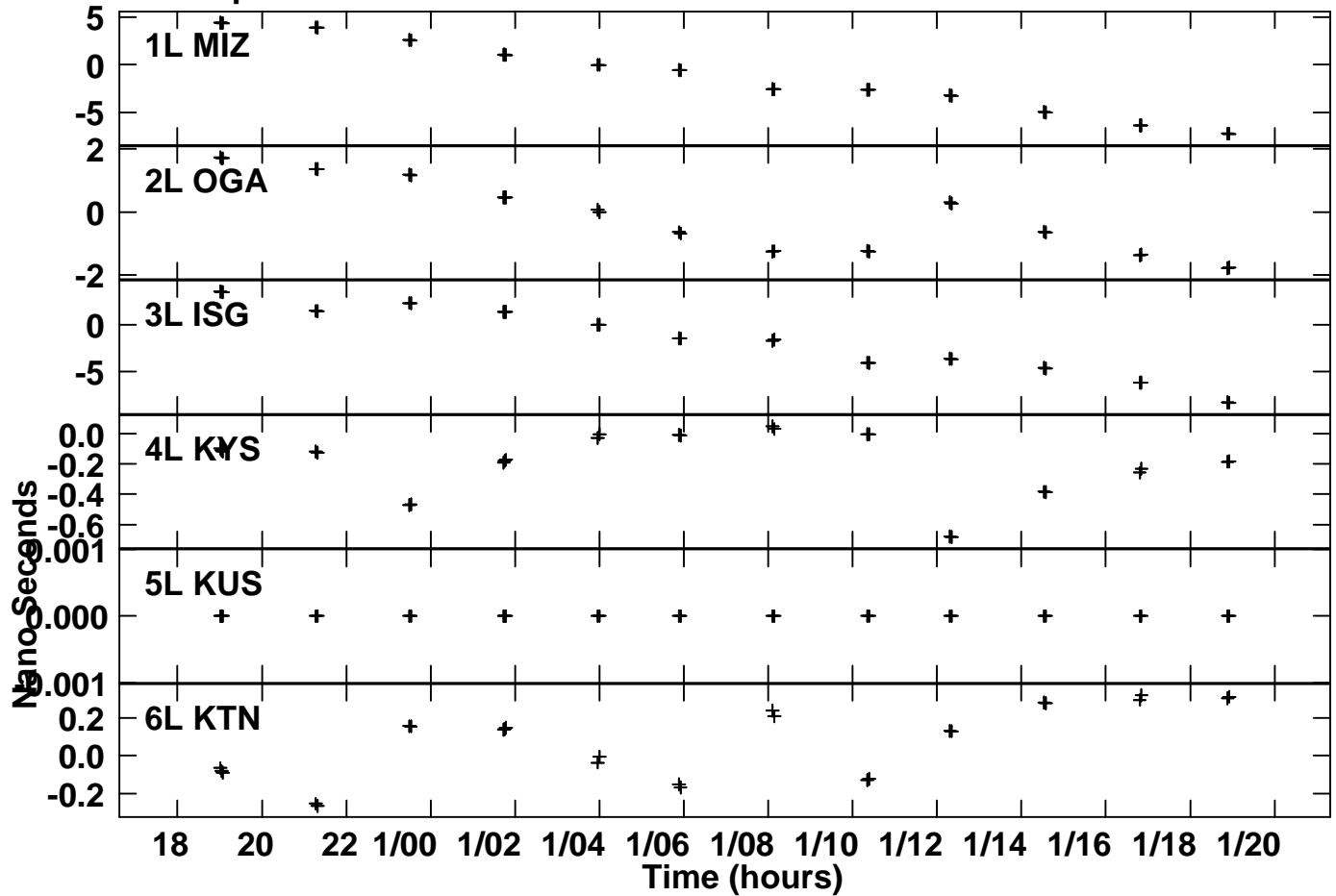
Plot file version 4 created 06-NOV-2015 17:04:21
 SNR vs time for R15287A.MSORT.1
 SN 2 Lpol IF 2



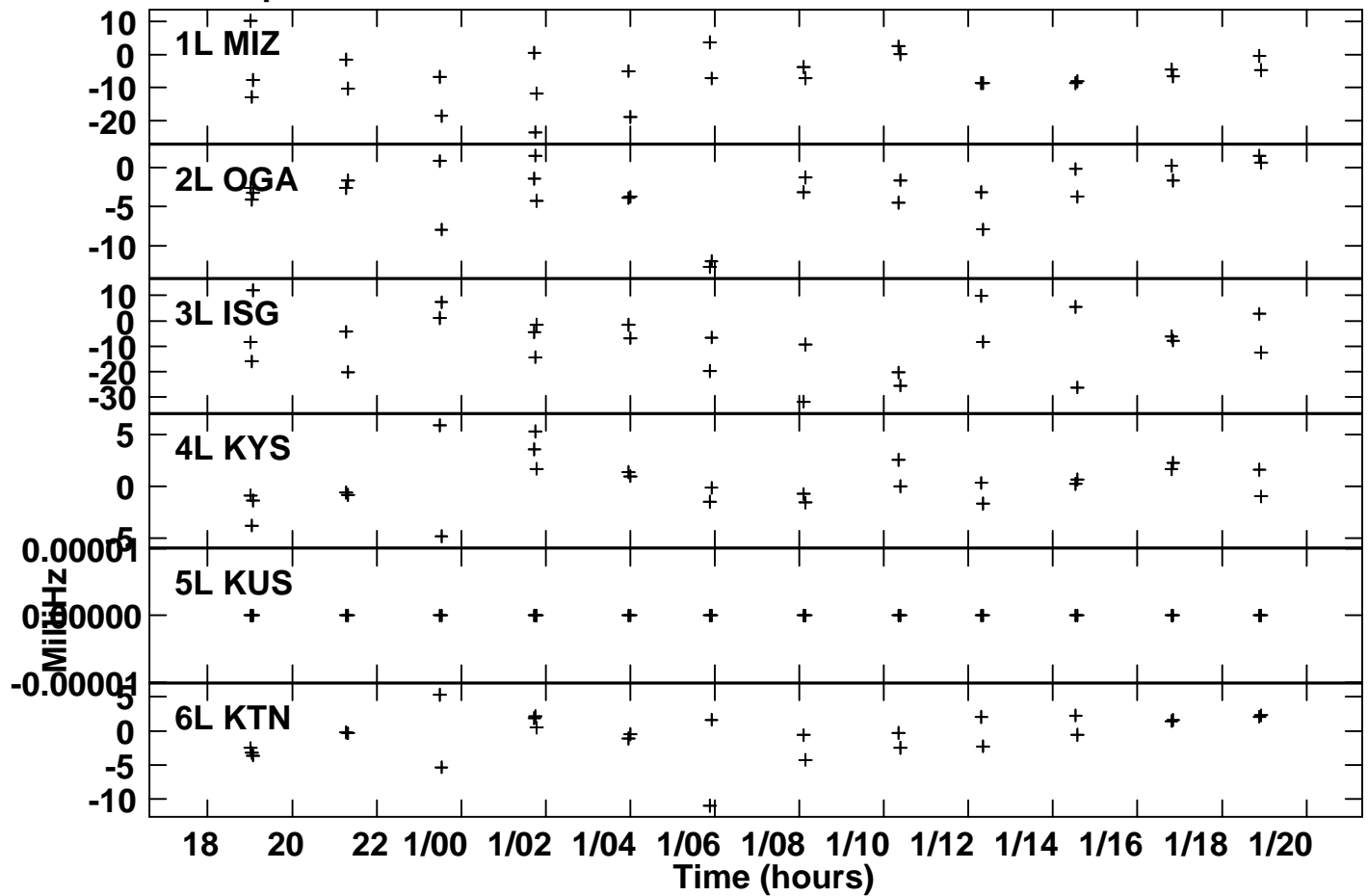
Plot file version 5 created 06-NOV-2015 17:04:35

Delay vs time for R15287A.MSORT.1

SN 2 Lpol IF 2



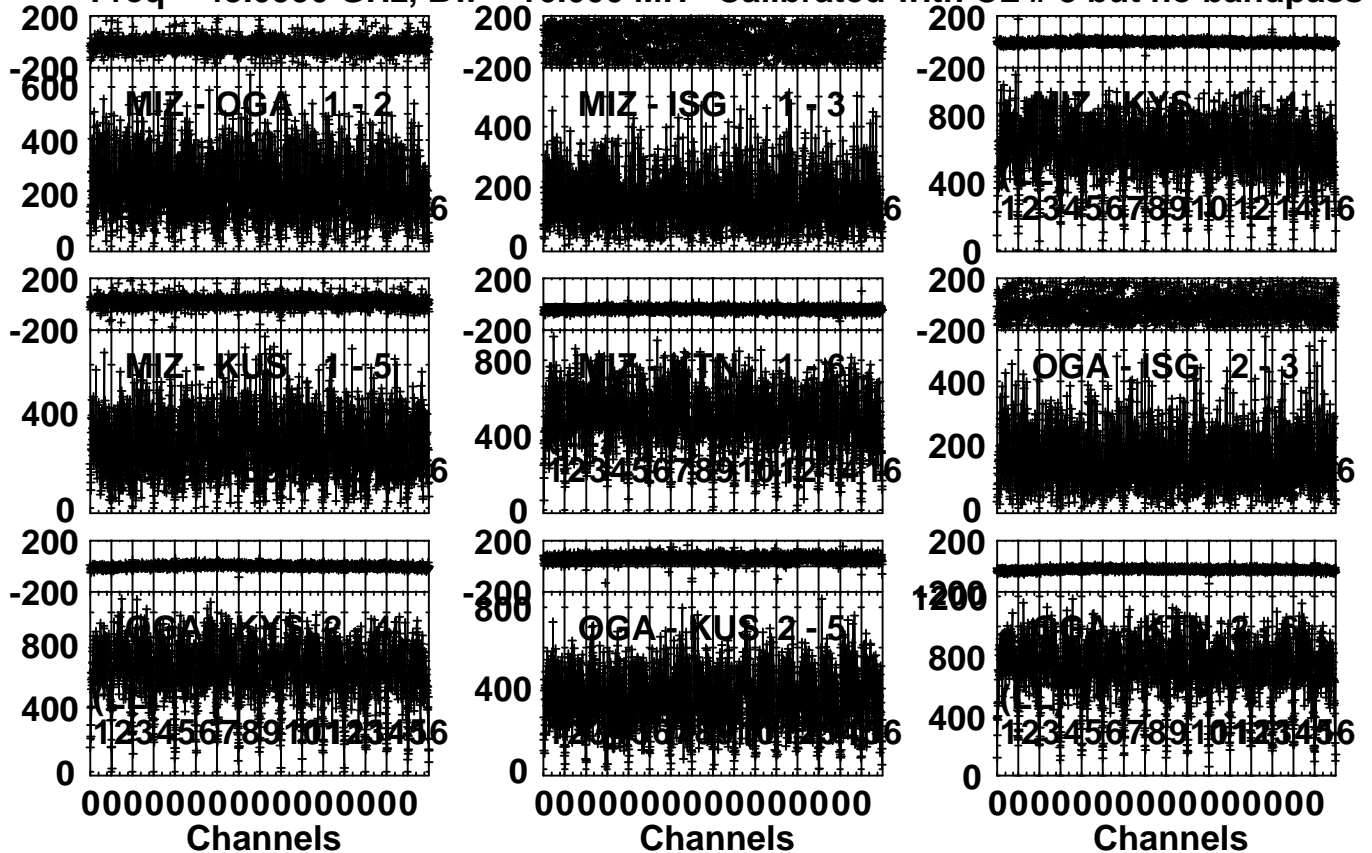
Plot file version 6 created 06-NOV-2015 17:04:54
 Rate vs time for R15287A.MSORT.1
 SN 2 Lpol IF 2



Plot file version 7 created 06-NOV-2015 17:05:42

3C84 R15287A.MSORT.1

Freq = 43.0990 GHz, Bw = 16.000 MH Calibrated with CL # 3 but no bandpass applied



Lower frame: Micro Ampl Jy Top frame: Phas deg

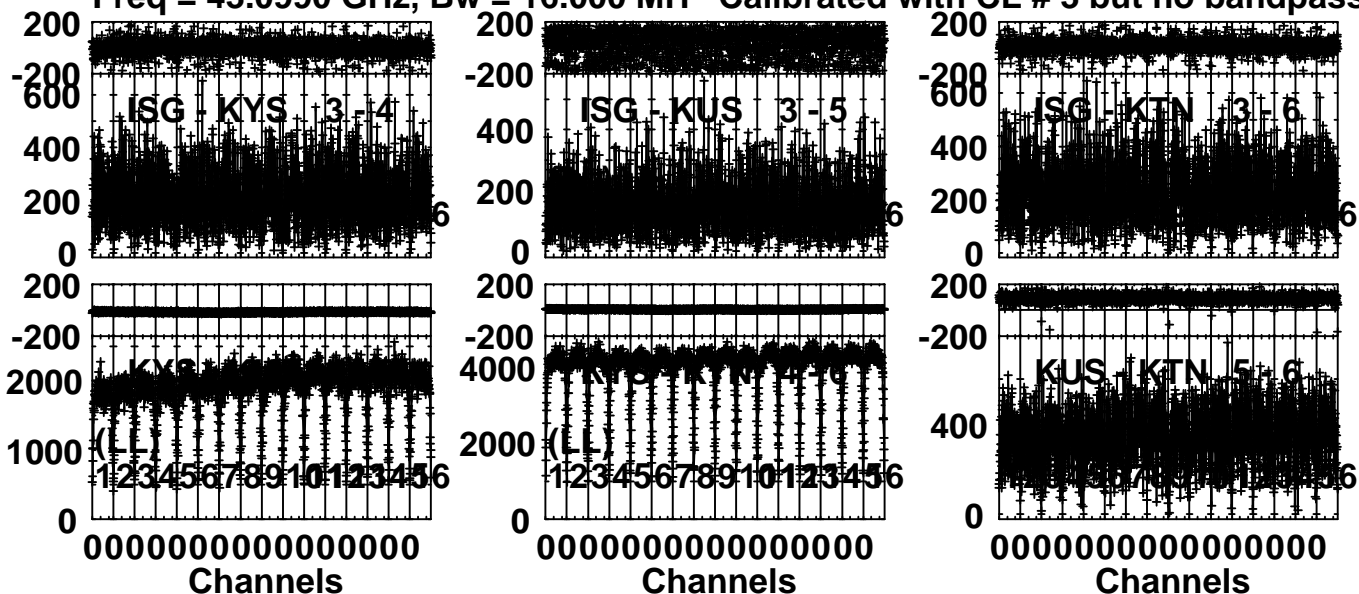
Vector averaged cross-power spectrum Several baselines displayed

Timerange: 00/19:00:01 to 00/19:04:59

Plot file version 8 created 06-NOV-2015 17:05:47

3C84 R15287A.MSORT.1

Freq = 43.0990 GHz, Bw = 16.000 MH Calibrated with CL # 3 but no bandpass applied



Lower frame: Micro Ampl Jy Top frame: Phas deg

Vector averaged cross-power spectrum Several baselines displayed

Timerange: 00/19:00:01 to 00/19:04:59