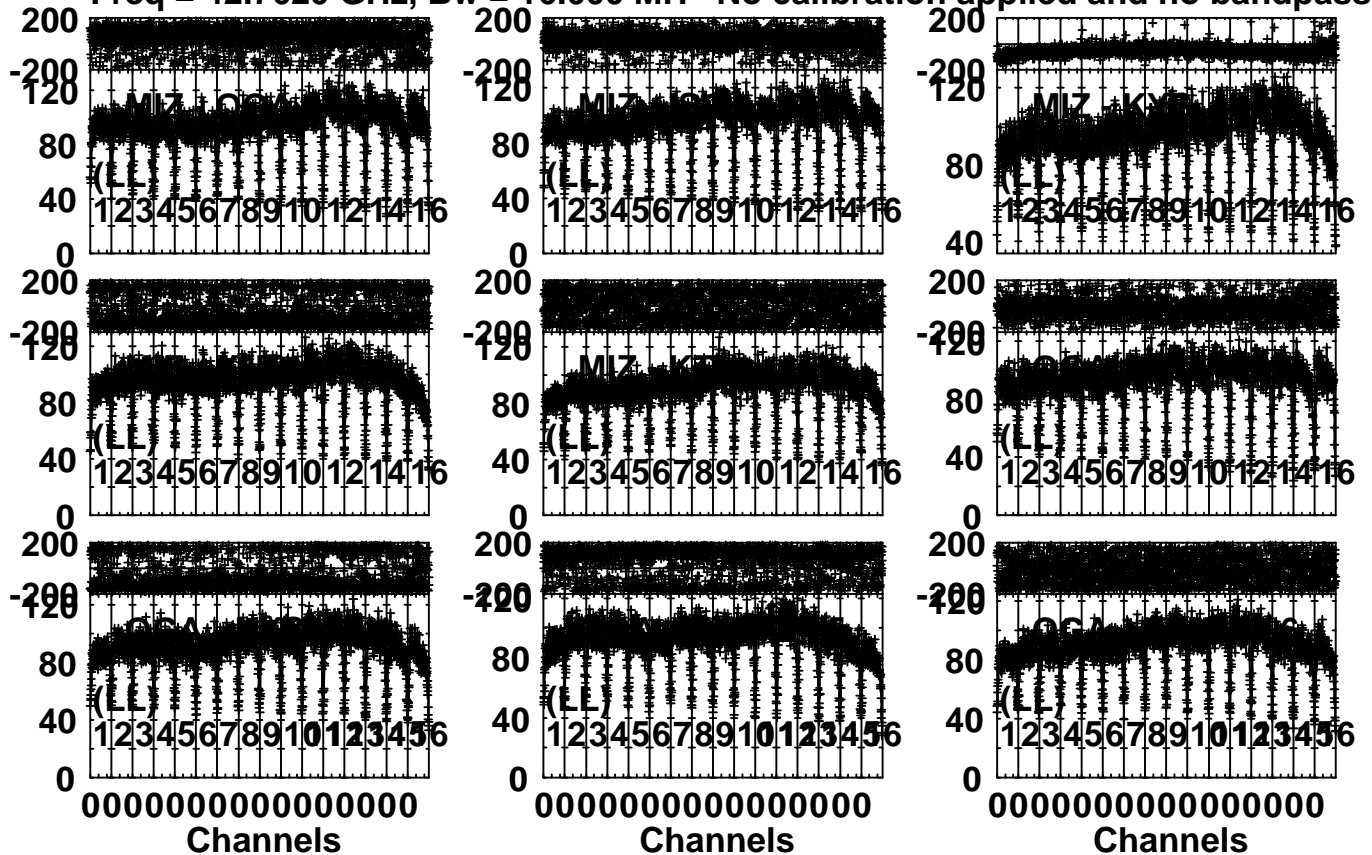


Plot file version 1 created 26-OCT-2015 11:10:08

NRAO530 R15273A.MSORT.1

Freq = 42.7620 GHz, Bw = 16.000 MH No calibration applied and no bandpass appli



Lower frame: Milli Ampl Jy Top frame: Phas deg

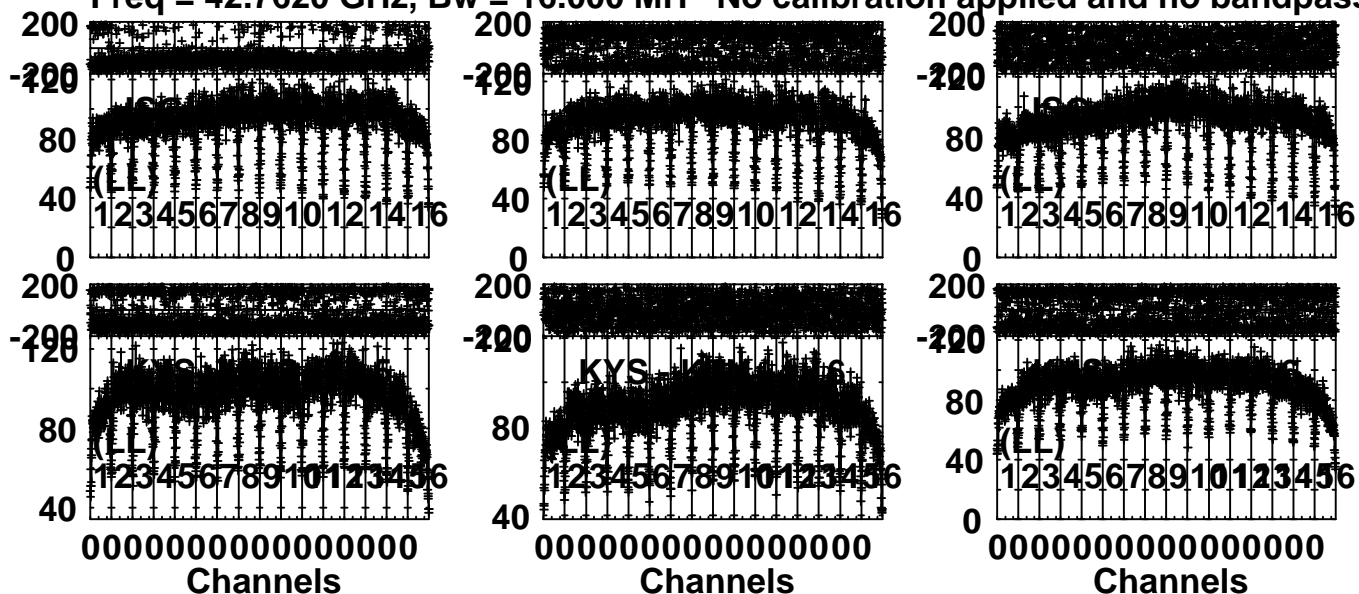
Scalar averaged cross-power spectrum Several baselines displayed

Timerange: 00/05:51:01 to 00/05:52:58

Plot file version 2 created 26-OCT-2015 11:10:08

NRAO530 R15273A.MSORT.1

Freq = 42.7620 GHz, Bw = 16.000 MH No calibration applied and no bandpass appli

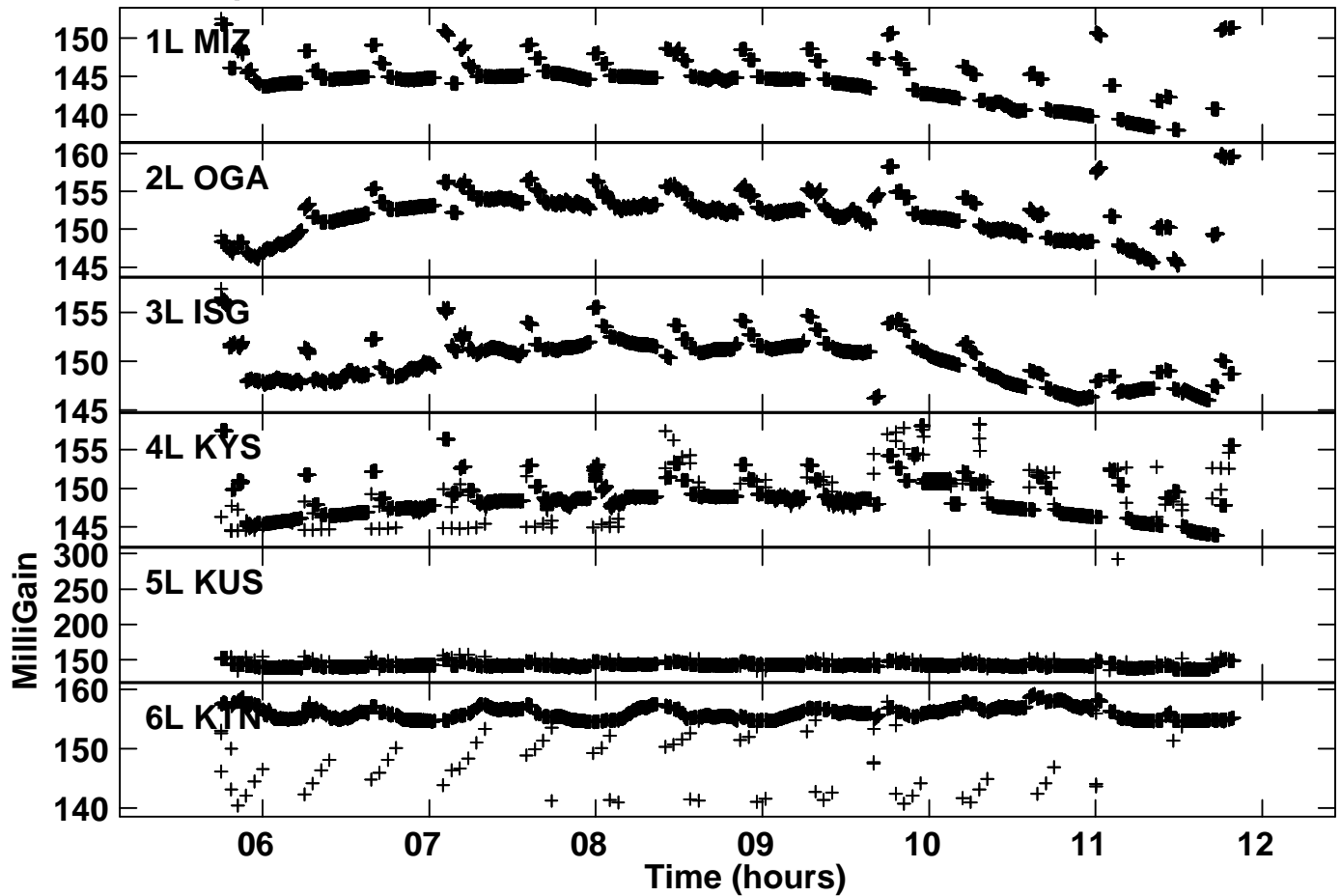


Lower frame: Milli Ampl Jy Top frame: Phas deg

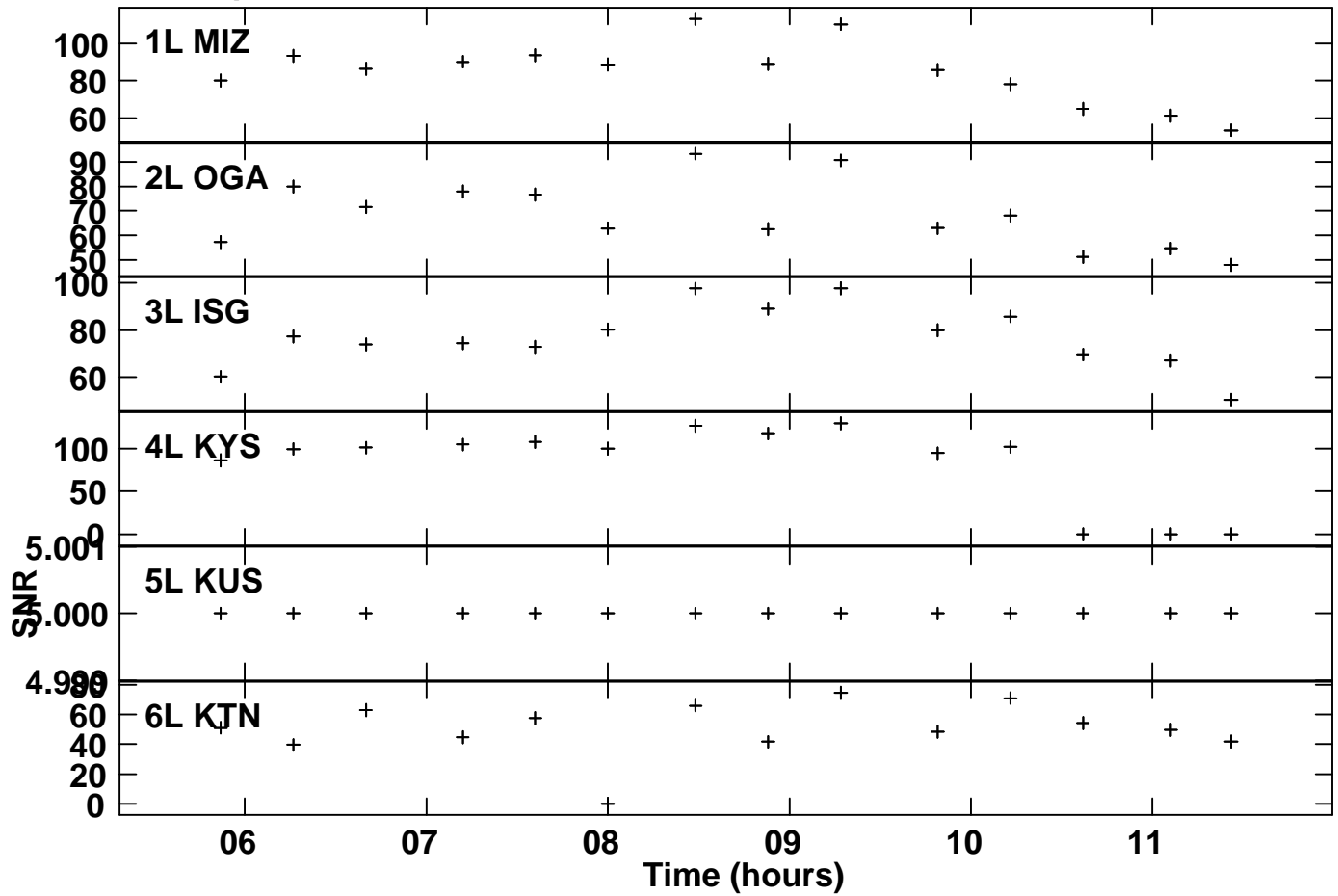
Scalar averaged cross-power spectrum Several baselines displayed

Timerange: 00/05:51:01 to 00/05:52:58

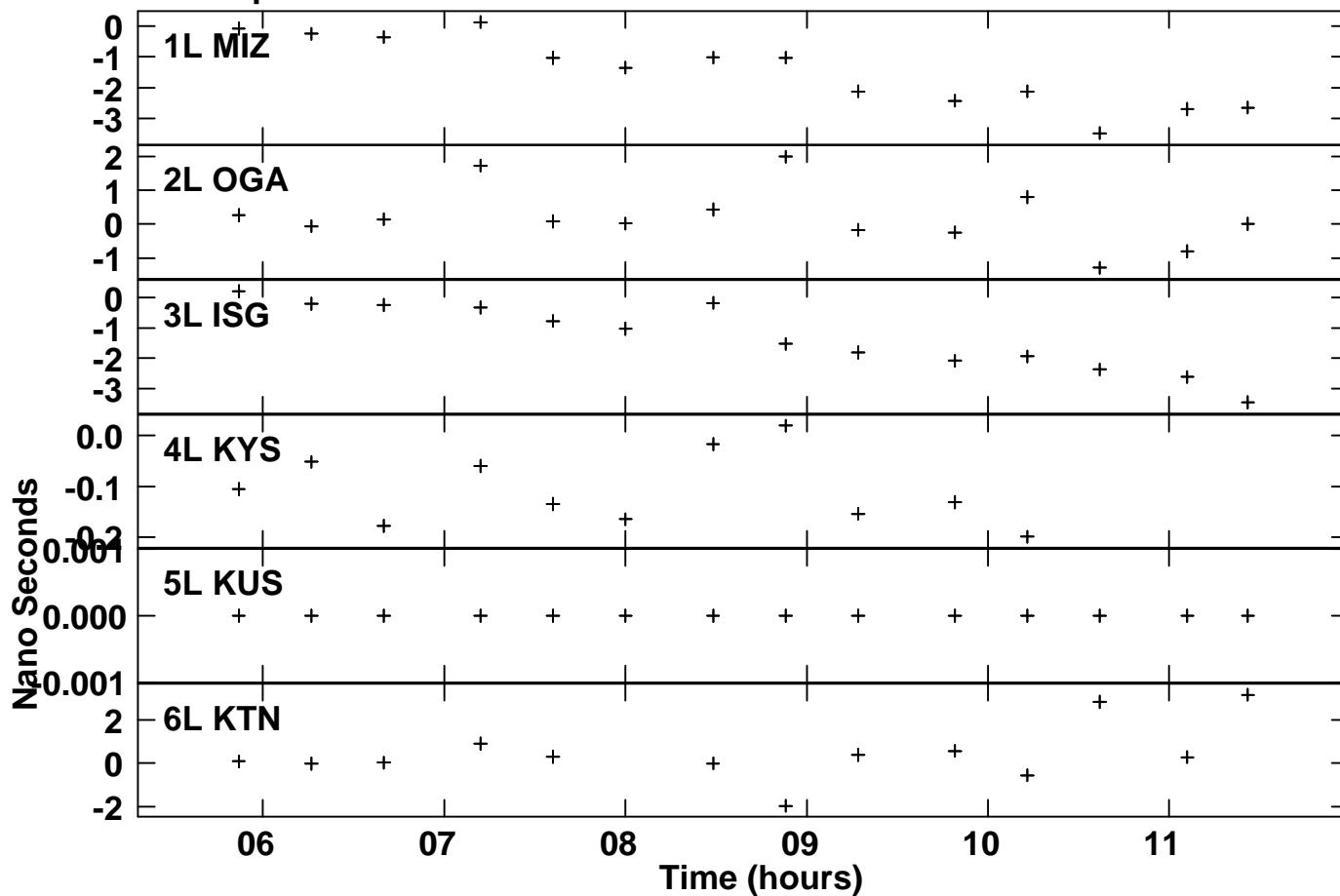
Plot file version 3 created 26-OCT-2015 11:10:46  
Gain amp vs time for R15273A.MSORT.1  
SN 1 Lpol IF 2



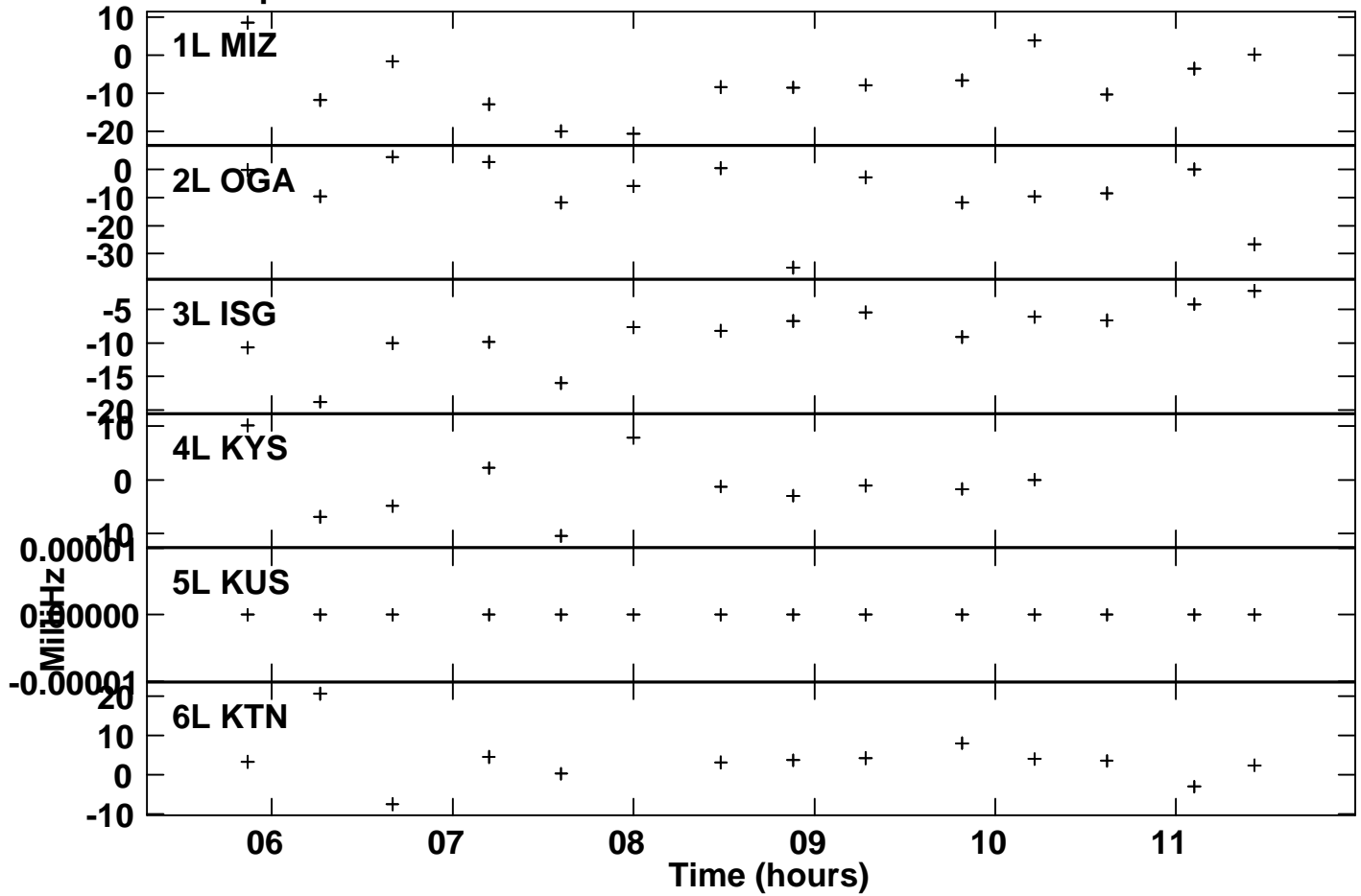
Plot file version 4 created 26-OCT-2015 12:00:25  
SNR vs time for R15273A.MSORT.1  
SN 2 Lpol IF 2



Plot file version 5 created 26-OCT-2015 12:00:41  
Delay vs time for R15273A.MSORT.1  
SN 2 Lpol IF 2



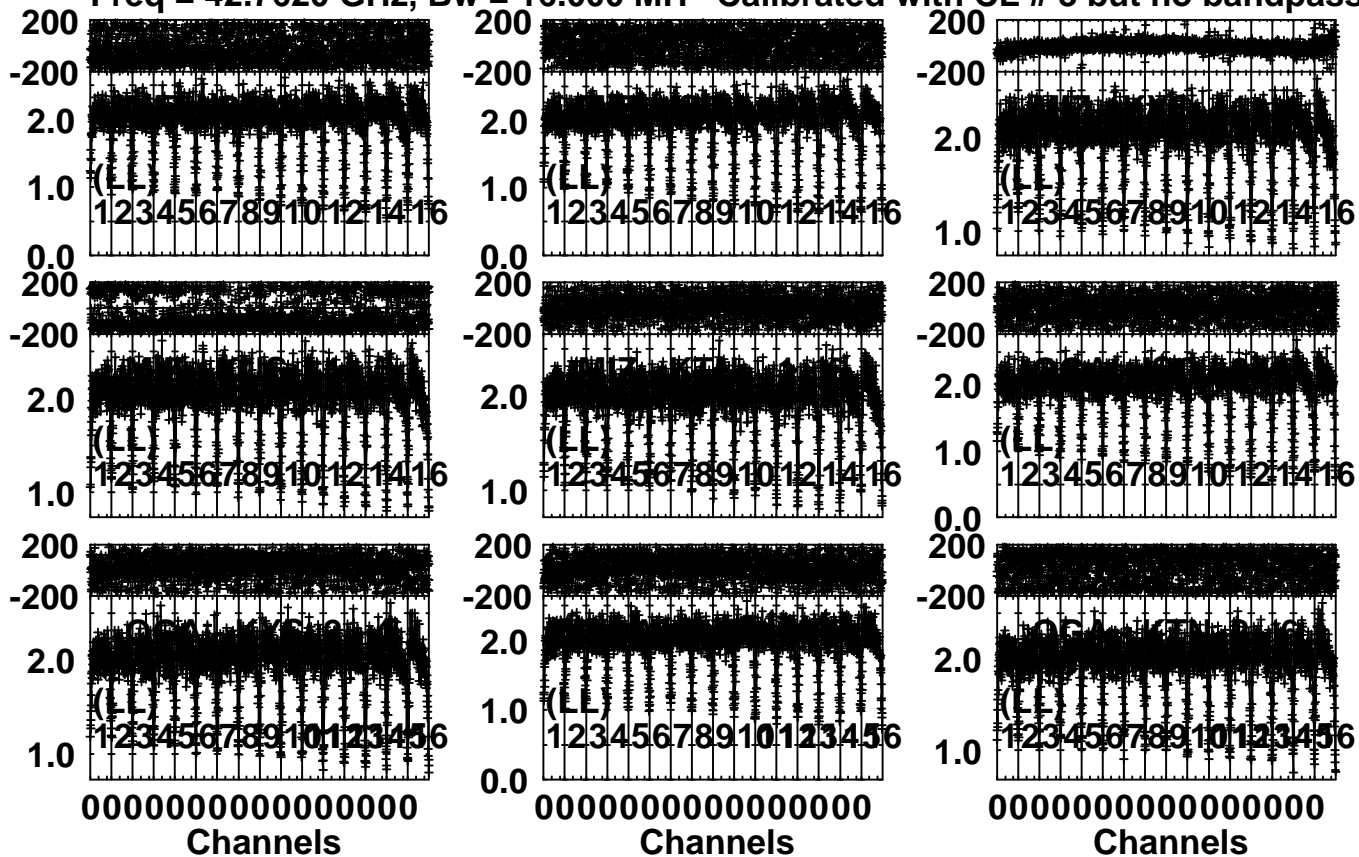
Plot file version 6 created 26-OCT-2015 12:00:57  
Rate vs time for R15273A.MSORT.1  
SN 2 Lpol IF 2



Plot file version 7 created 26-OCT-2015 12:03:22

NRAO530 R15273A.MSORT.1

Freq = 42.7620 GHz, Bw = 16.000 MH Calibrated with CL # 3 but no bandpass applied



Lower frame: Milli Ampl Jy Top frame: Phas deg

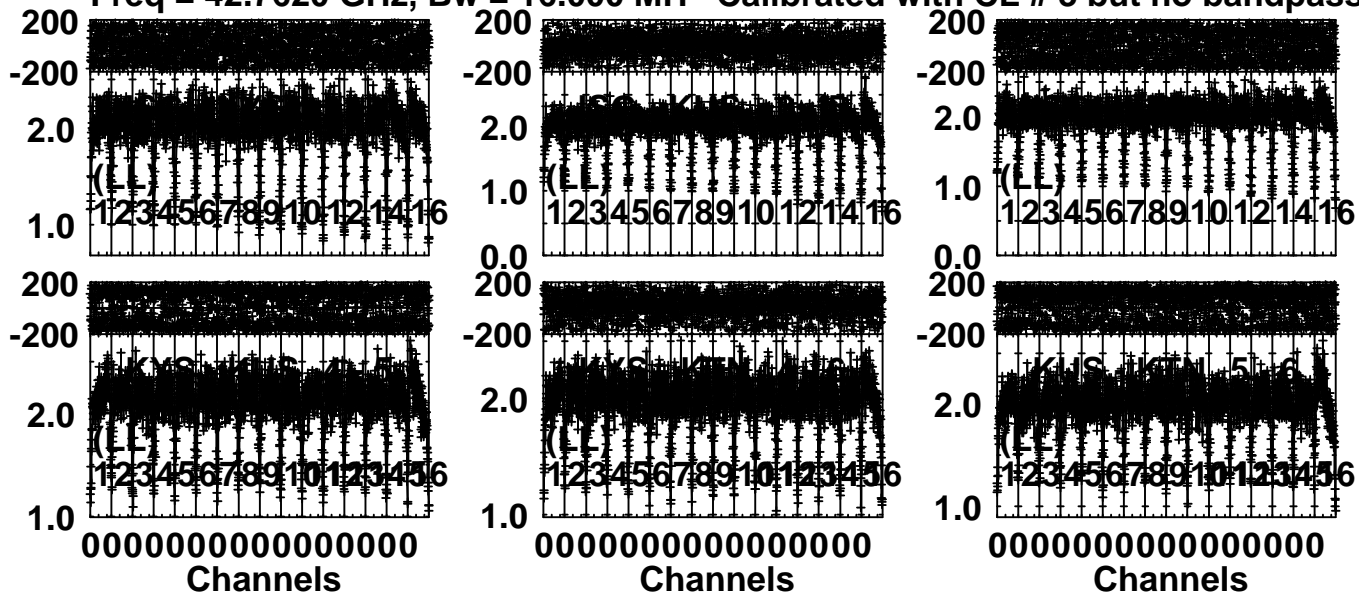
Scalar averaged cross-power spectrum Several baselines displayed

Timerange: 00/05:51:01 to 00/05:52:58

Plot file version 8 created 26-OCT-2015 12:03:23

NRAO530 R15273A.MSORT.1

Freq = 42.7620 GHz, Bw = 16.000 MH Calibrated with CL # 3 but no bandpass applied



Lower frame: Milli Ampl Jy Top frame: Phas deg

Scalar averaged cross-power spectrum Several baselines displayed

Timerange: 00/05:51:01 to 00/05:52:58