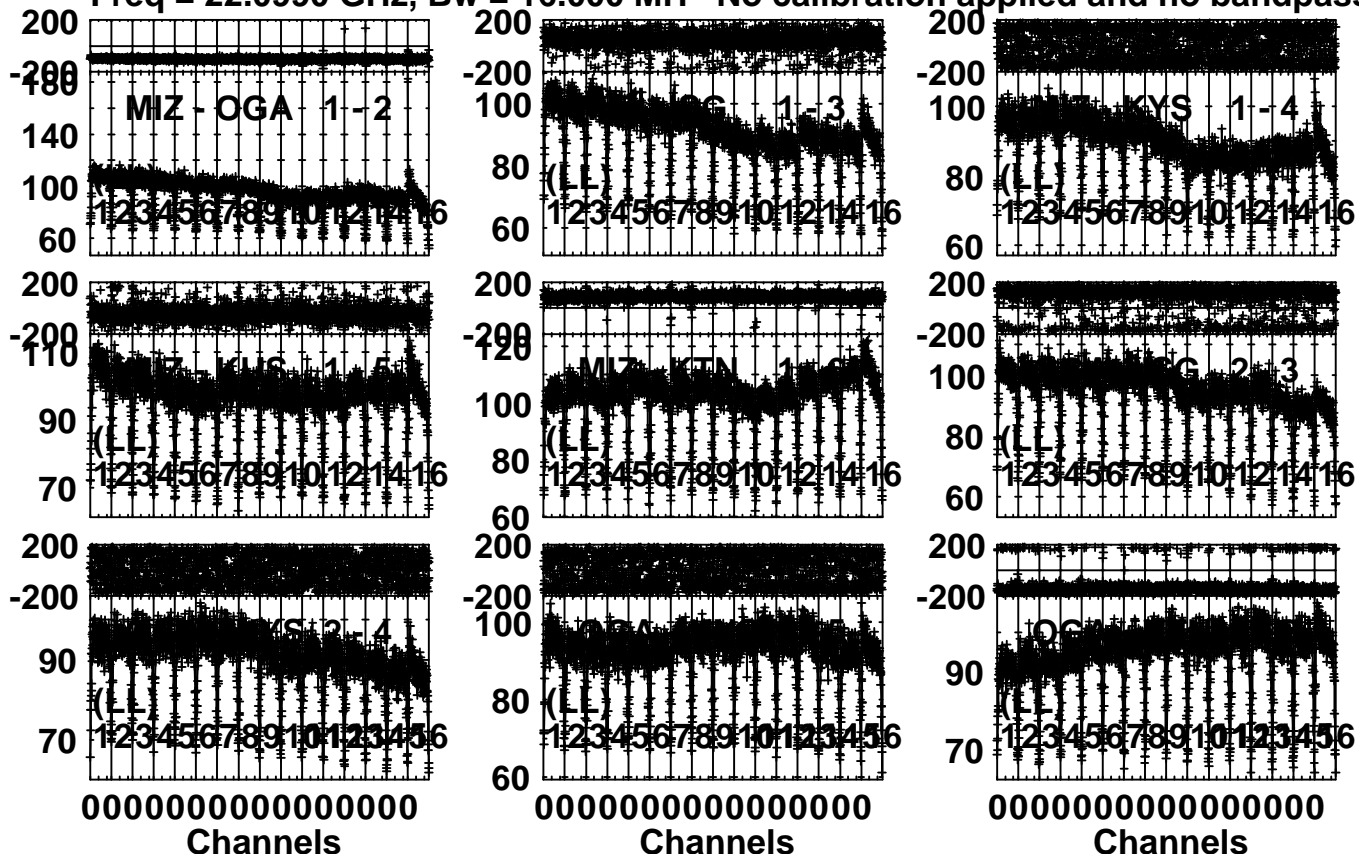


Plot file version 1 created 29-OCT-2015 10:17:04

3C84 R15272A.MSORT.2

Freq = 22.0990 GHz, Bw = 16.000 MH No calibration applied and no bandpass appli



Lower frame: Milli Ampl Jy Top frame: Phas deg

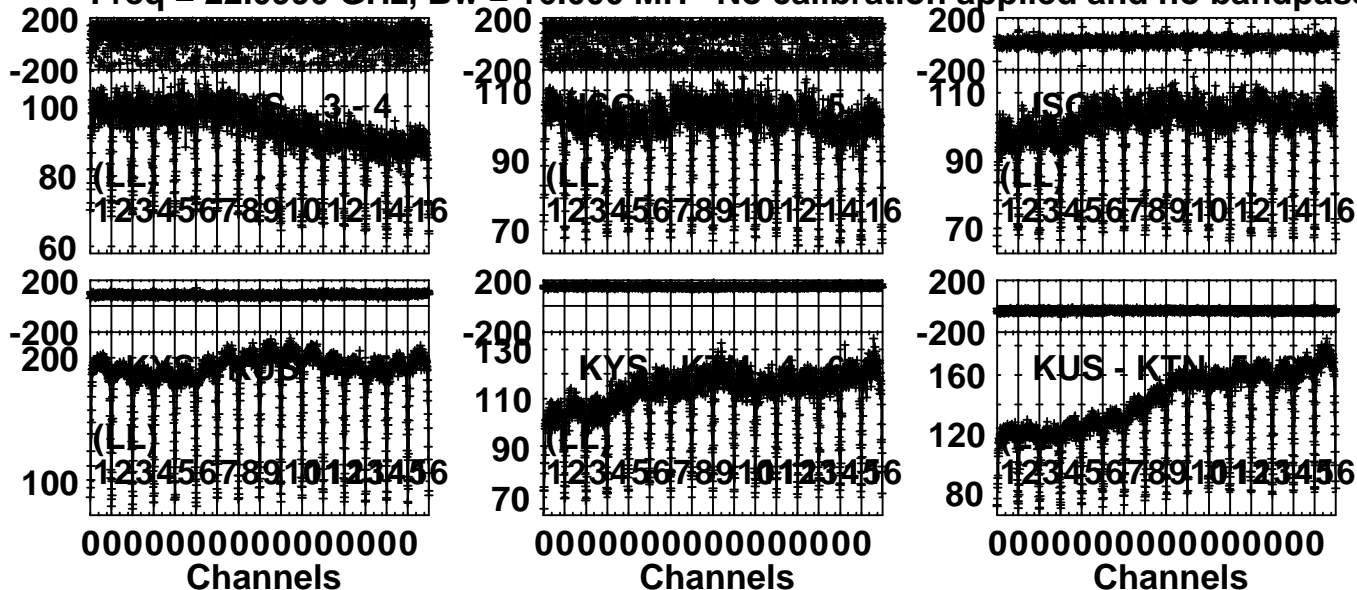
Scalar averaged cross-power spectrum Several baselines displayed

Timerange: 00/20:09:01 to 00/20:18:58

Plot file version 2 created 29-OCT-2015 10:17:05

3C84 R15272A.MSORT.2

Freq = 22.0990 GHz, Bw = 16.000 MH No calibration applied and no bandpass appli

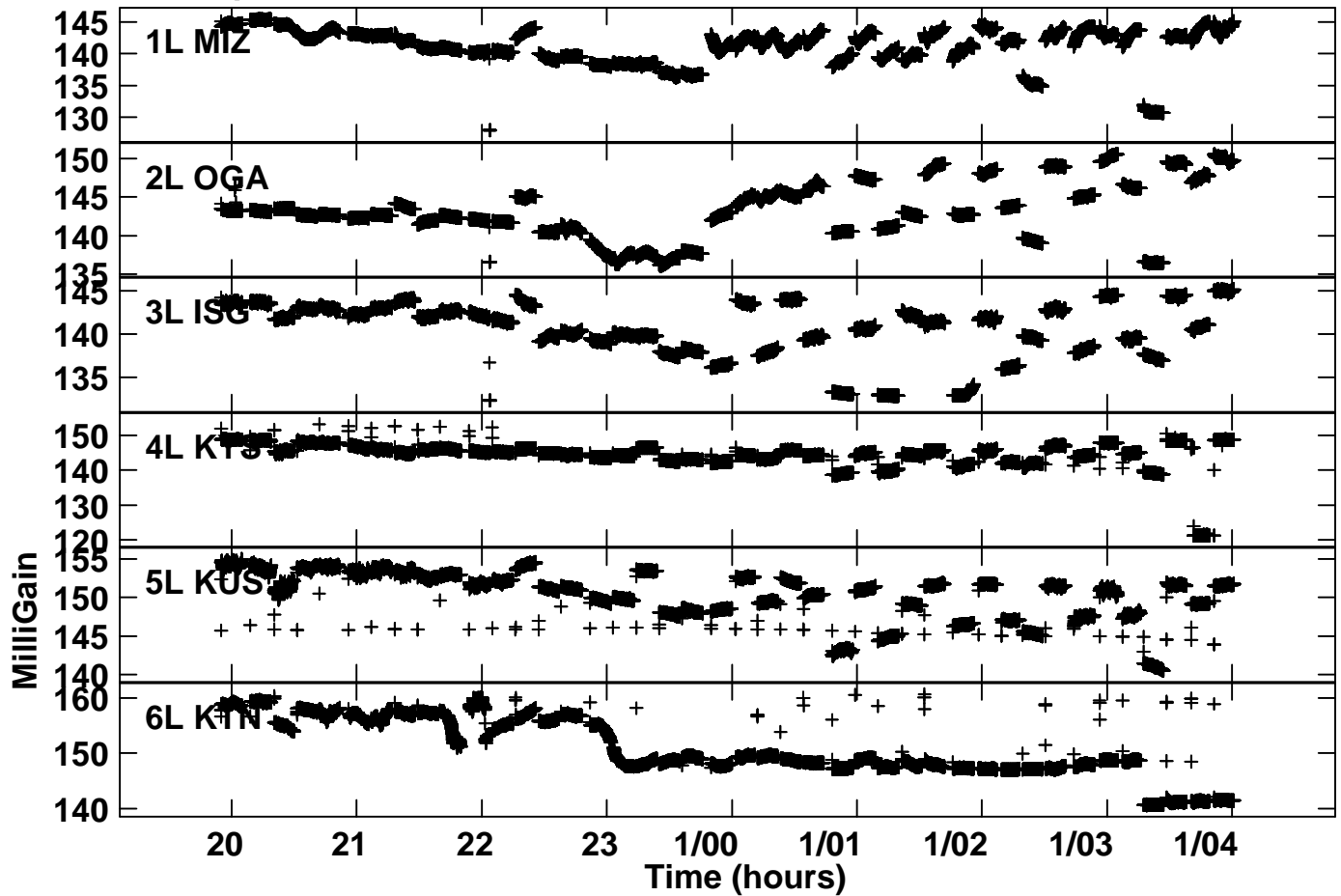


Lower frame: Milli Ampl Jy Top frame: Phas deg

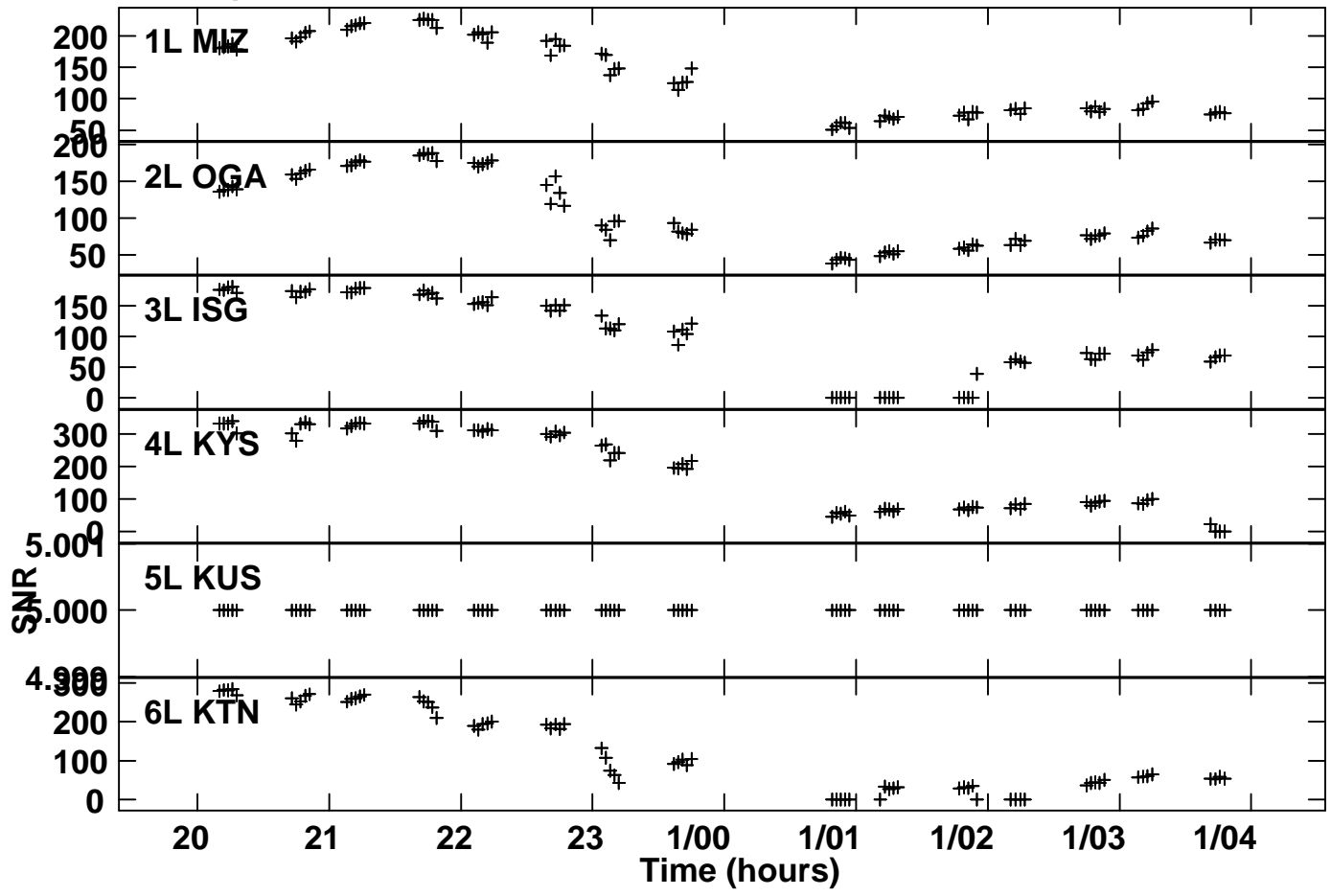
Scalar averaged cross-power spectrum Several baselines displayed

Timerange: 00/20:09:01 to 00/20:18:58

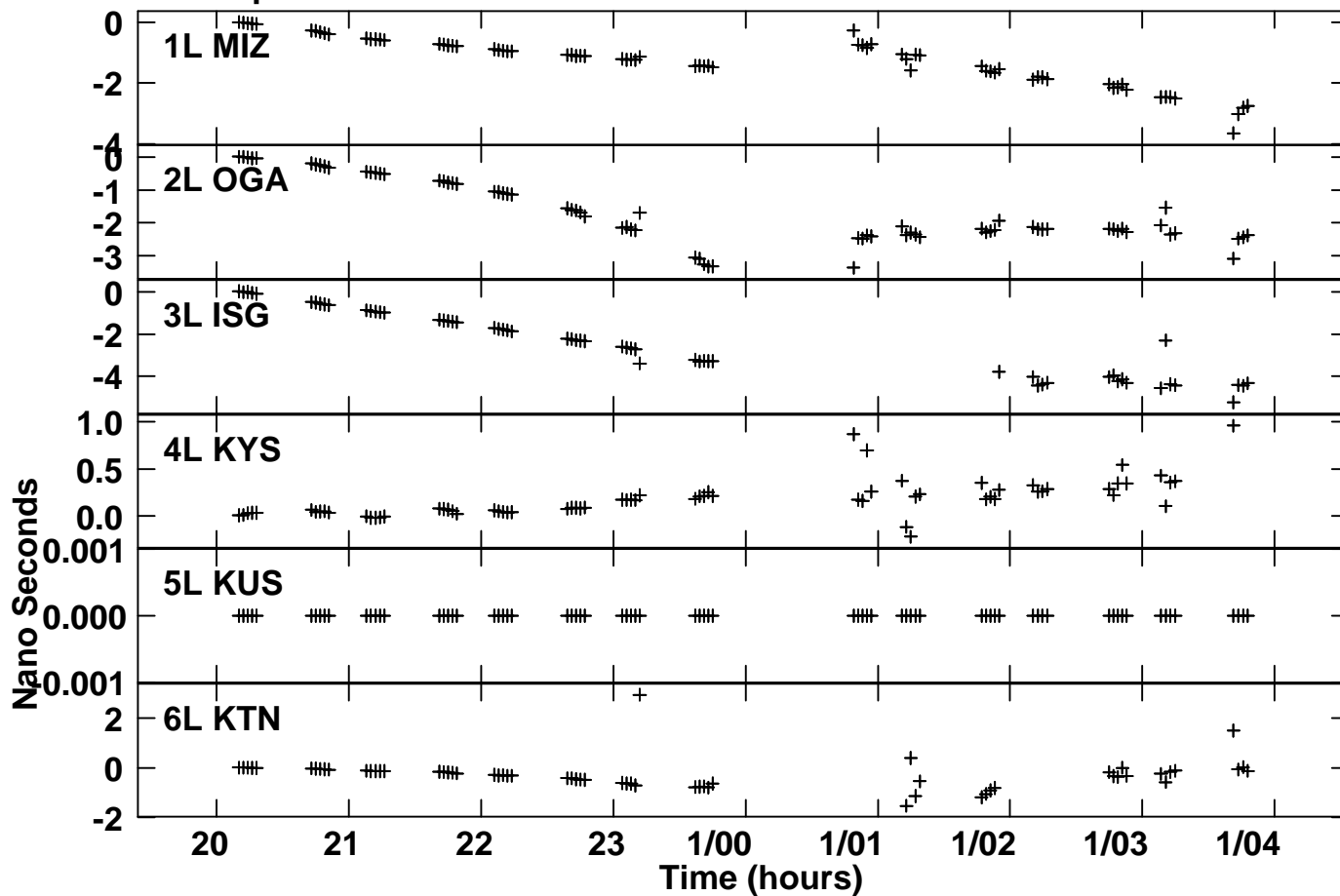
Plot file version 3 created 29-OCT-2015 10:19:23
Gain amp vs time for R15272A.MSORT.2
SN 1 Lpol IF 2



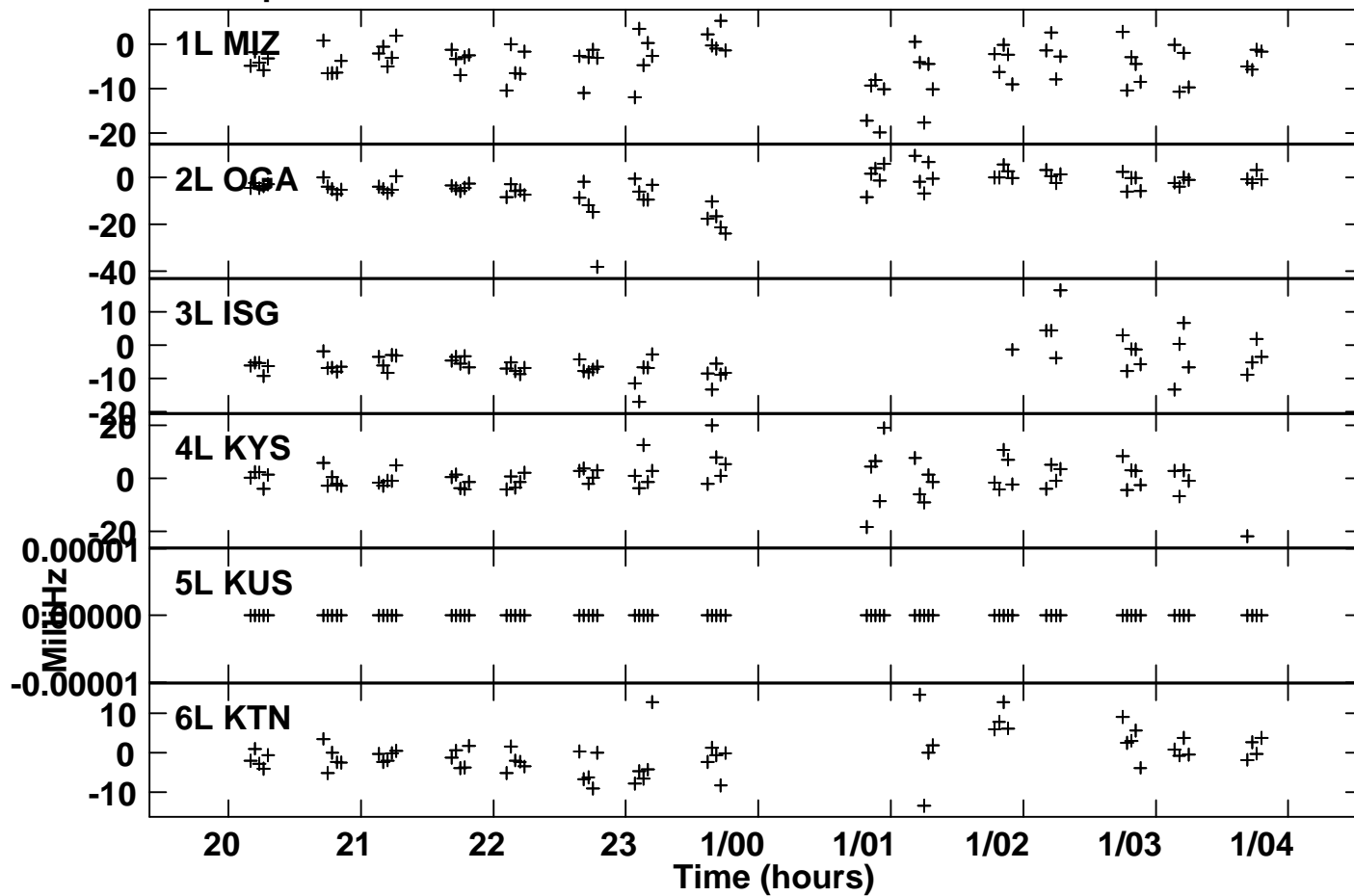
Plot file version 4 created 29-OCT-2015 10:47:51
SNR vs time for R15272A.MSORT.2
SN 2 Lpol IF 2



Plot file version 5 created 29-OCT-2015 10:48:12
Delay vs time for R15272A.MSORT.2
SN 2 Lpol IF 2



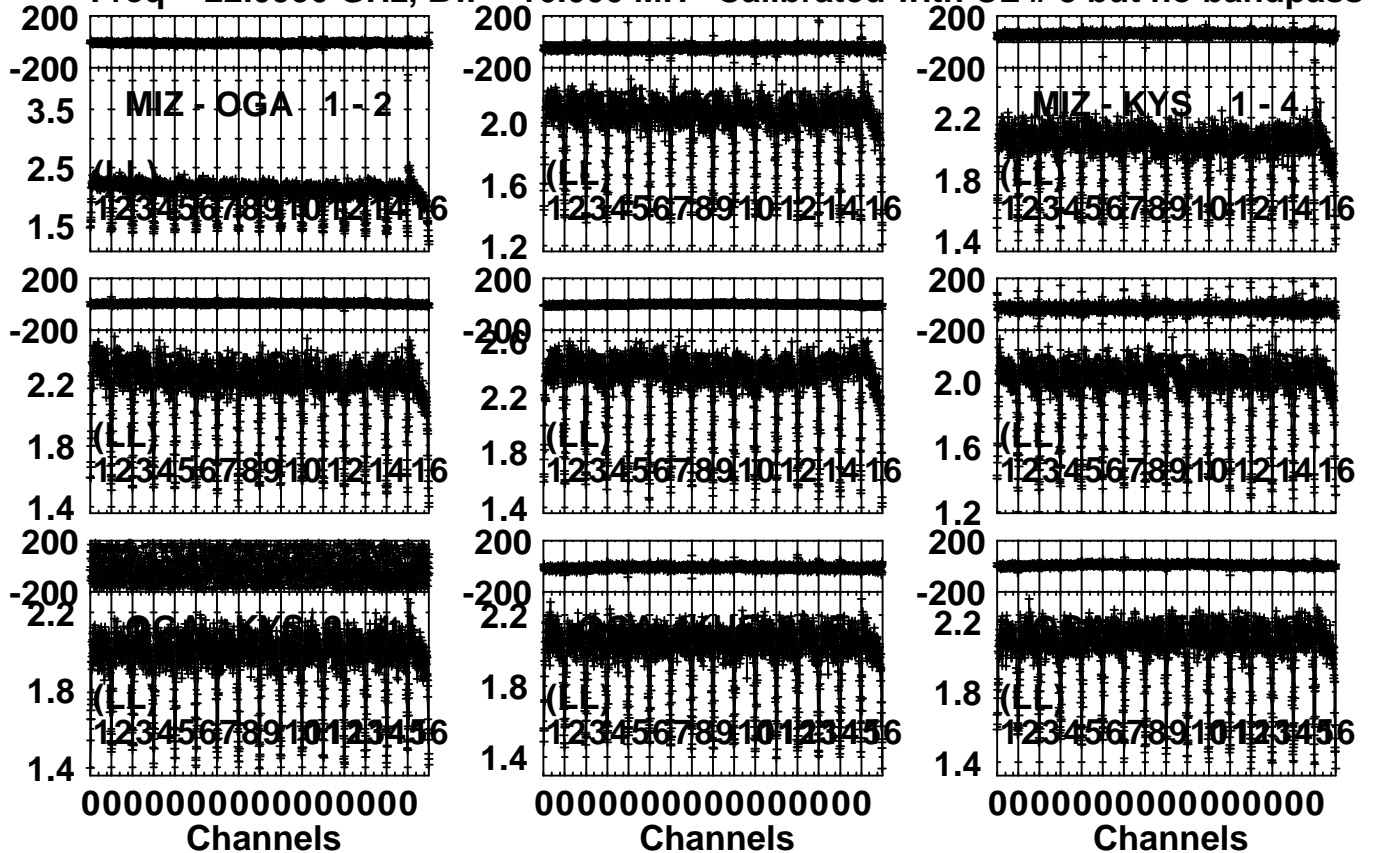
Plot file version 6 created 29-OCT-2015 10:48:30
Rate vs time for R15272A.MSORT.2
SN 2 Lpol IF 2



Plot file version 7 created 29-OCT-2015 10:49:12

3C84 R15272A.MSORT.2

Freq = 22.0990 GHz, Bw = 16.000 MH Calibrated with CL # 3 but no bandpass applied



Lower frame: Milli Ampl Jy Top frame: Phas deg

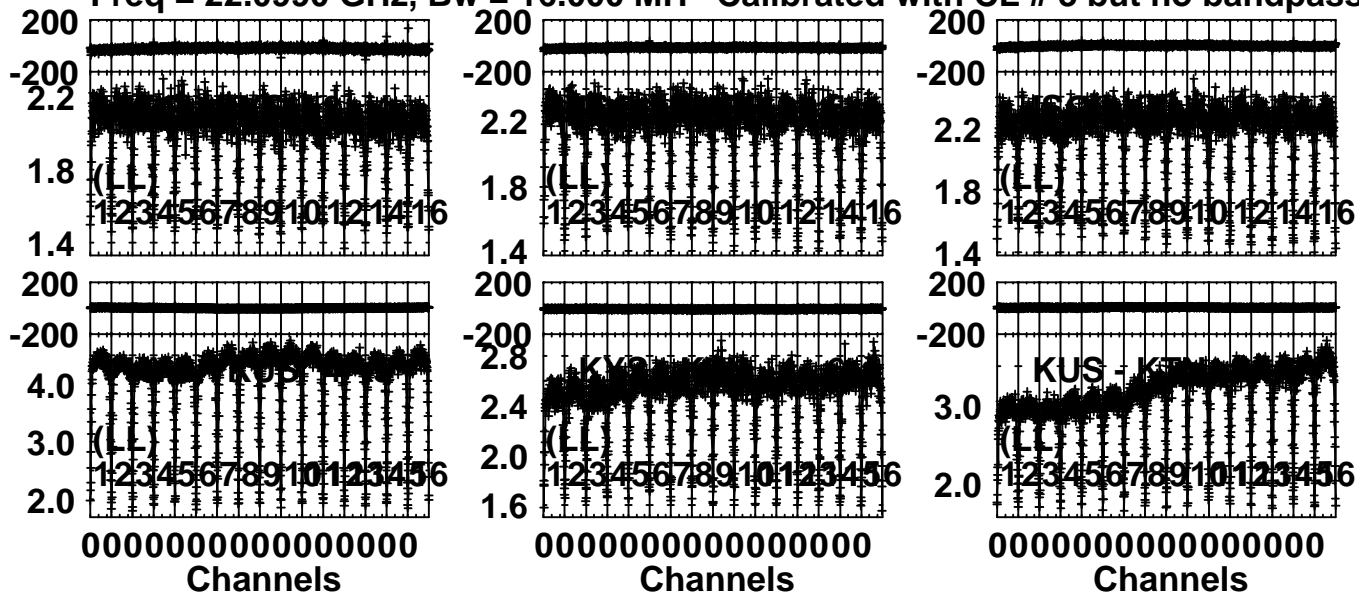
Scalar averaged cross-power spectrum Several baselines displayed

Timerange: 00/20:09:01 to 00/20:18:58

Plot file version 8 created 29-OCT-2015 10:49:16

3C84 R15272A.MSORT.2

Freq = 22.0990 GHz, Bw = 16.000 MH Calibrated with CL # 3 but no bandpass applied



Lower frame: Milli Ampl Jy Top frame: Phas deg
Scalar averaged cross-power spectrum Several baselines displayed
Timerange: 00/20:09:01 to 00/20:18:58