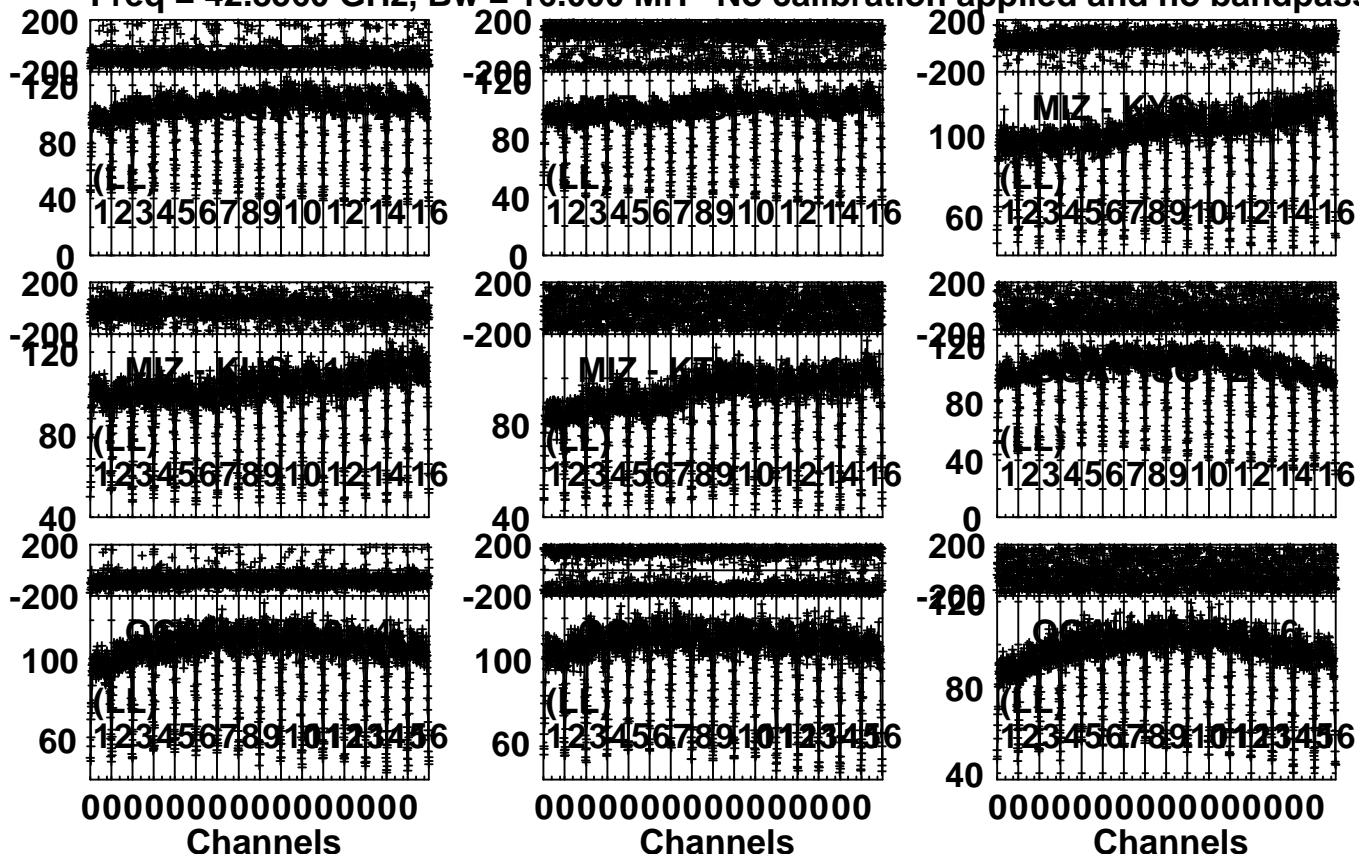


Plot file version 1 created 21-OCT-2015 13:30:55

3C345 R15259A.MSORT.1

Freq = 42.8560 GHz, Bw = 16.000 MH No calibration applied and no bandpass appli



Lower frame: Milli Ampl Jy Top frame: Phas deg

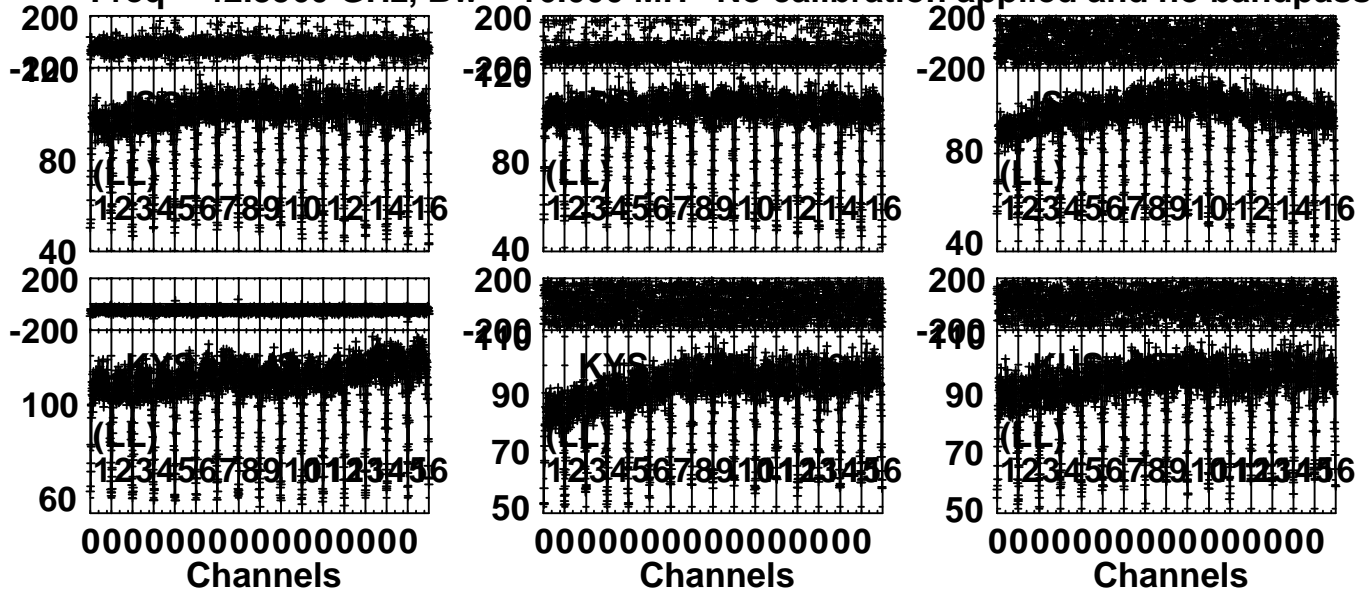
Scalar averaged cross-power spectrum Several baselines displayed

Timerange: 00/04:13:02 to 00/04:17:59

Plot file version 2 created 21-OCT-2015 13:30:56

3C345 R15259A.MSORT.1

Freq = 42.8560 GHz, Bw = 16.000 MH No calibration applied and no bandpass appli

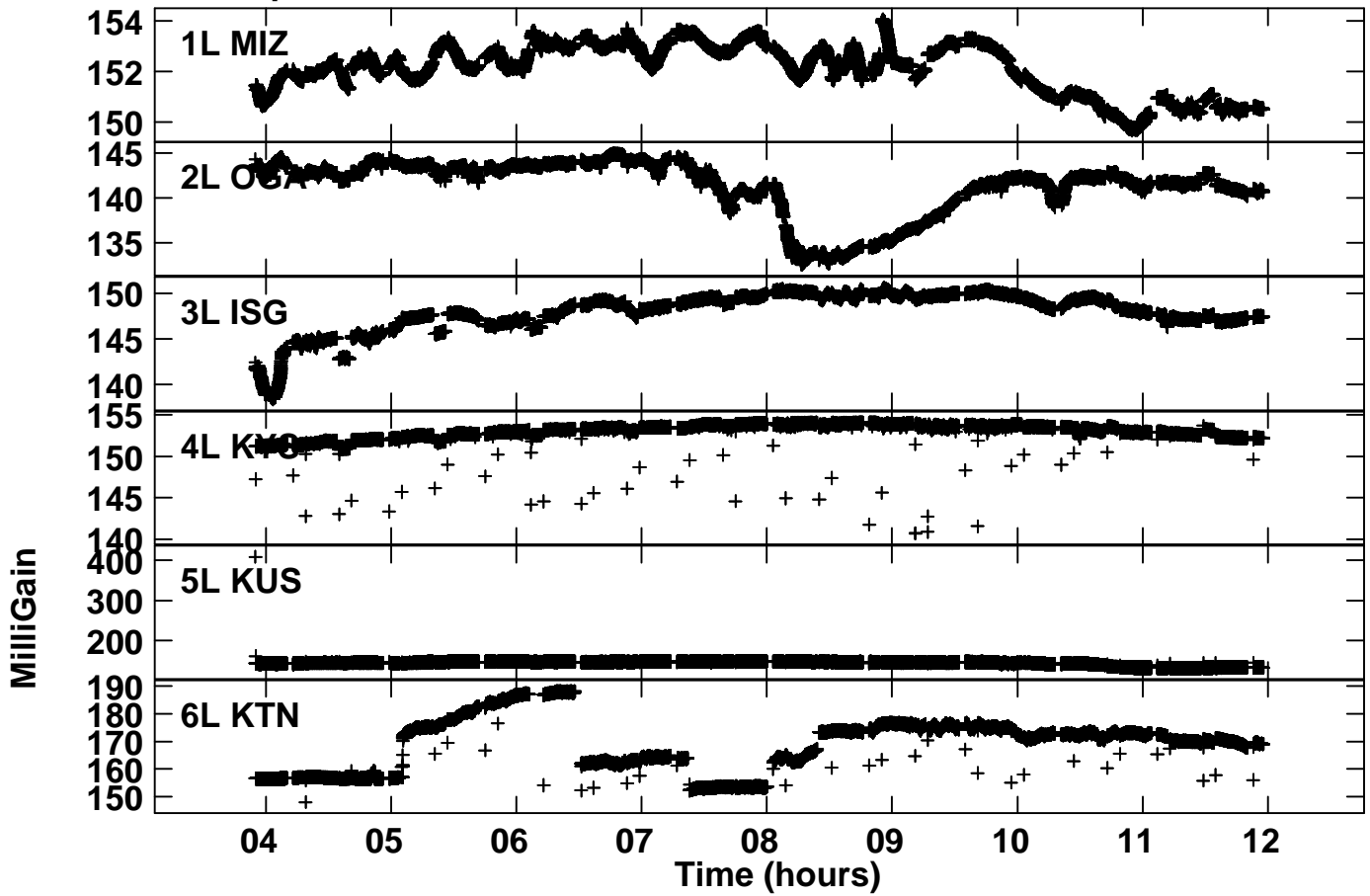


Lower frame: Milli Ampl Jy Top frame: Phas deg

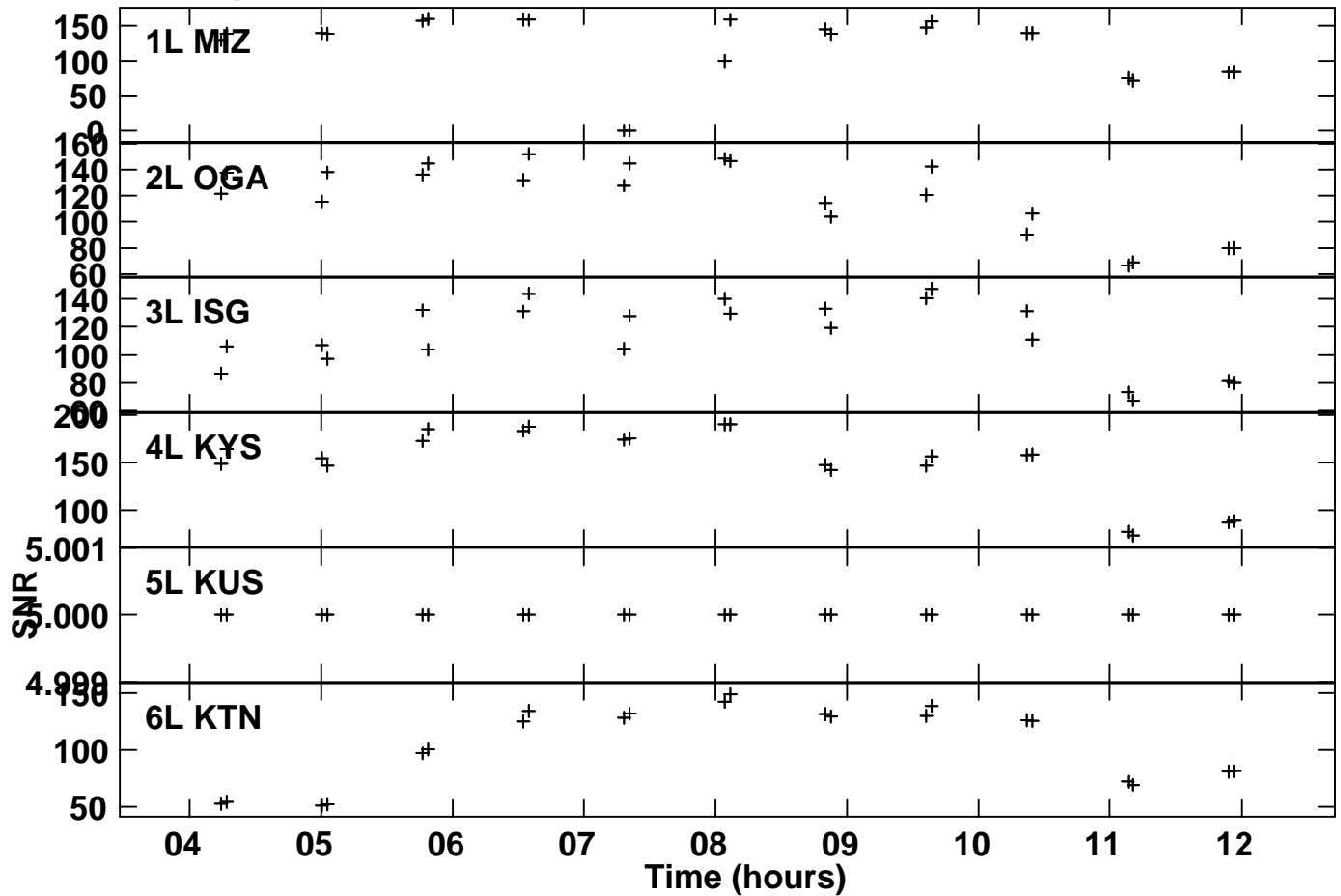
Scalar averaged cross-power spectrum Several baselines displayed

Timerange: 00/04:13:02 to 00/04:17:59

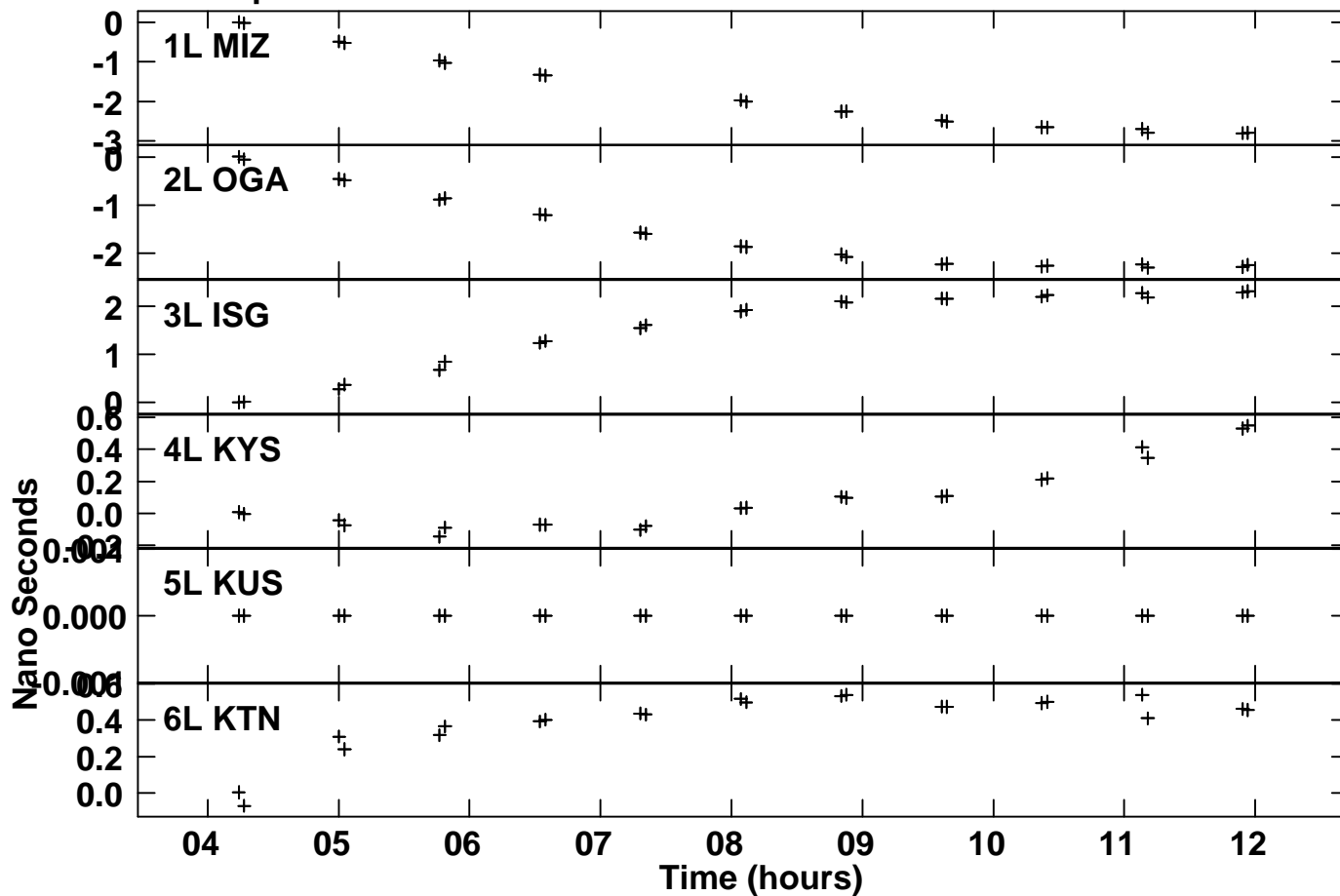
Plot file version 3 created 21-OCT-2015 13:31:25
Gain amp vs time for R15259A.MSORT.1
SN 1 Lpol IF 2



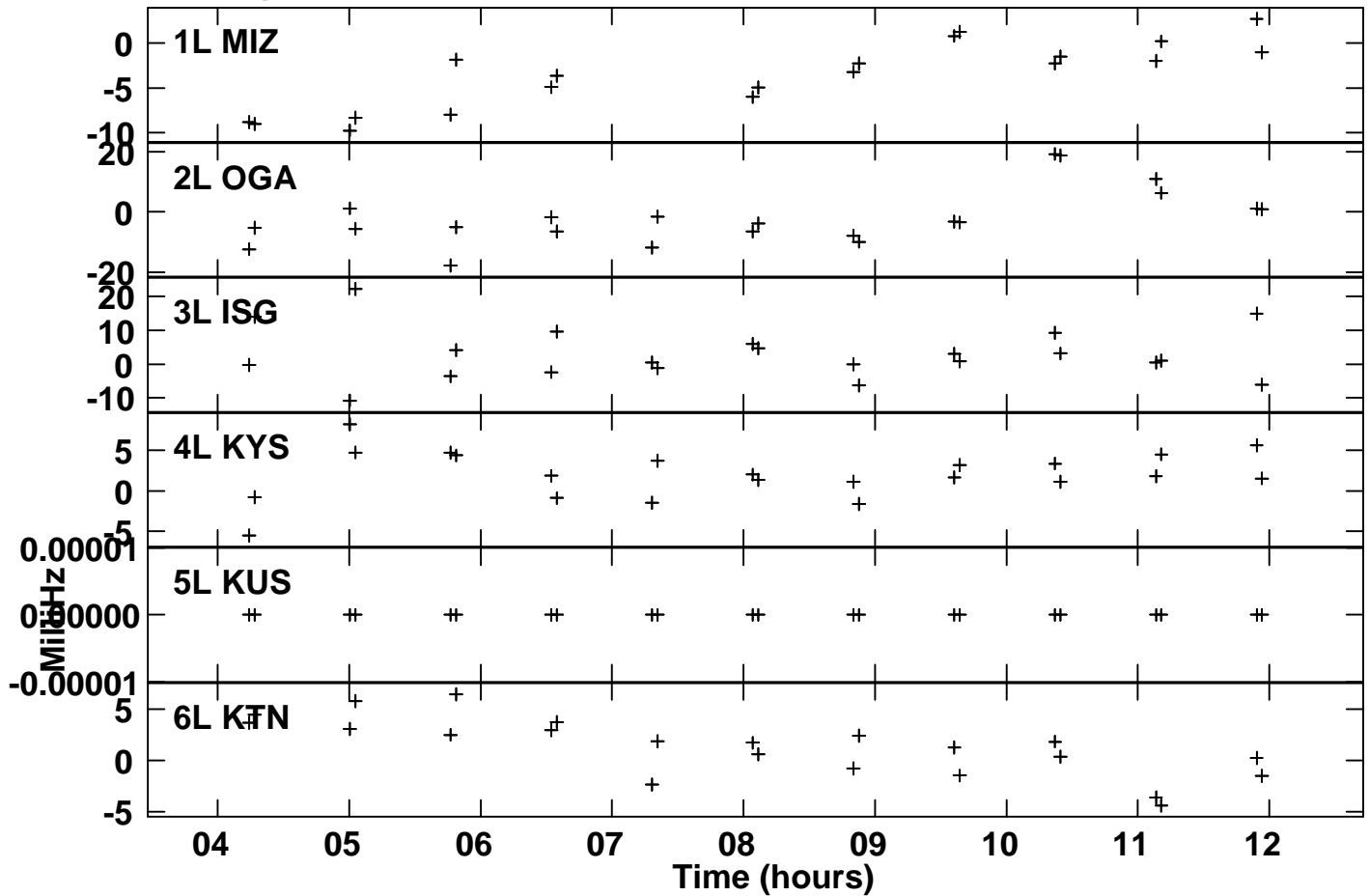
Plot file version 4 created 21-OCT-2015 13:42:19
 SNR vs time for R15259A.MSORT.1
 SN 2 Lpol IF 2



Plot file version 5 created 21-OCT-2015 13:42:33
Delay vs time for R15259A.MSORT.1
SN 2 Lpol IF 2



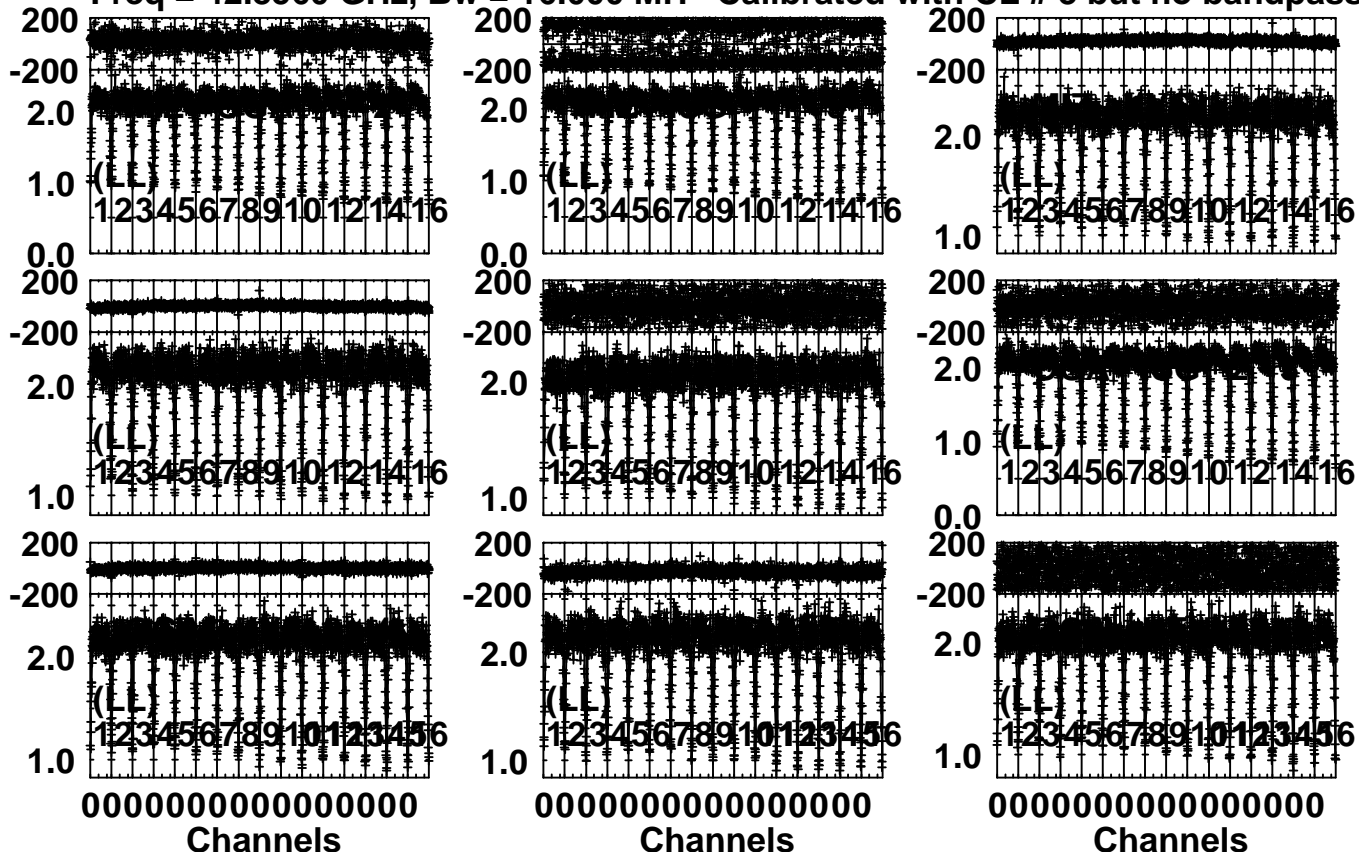
Plot file version 6 created 21-OCT-2015 13:42:50
Rate vs time for R15259A.MSORT.1
SN 2 Lpol IF 2



Plot file version 7 created 21-OCT-2015 13:43:18

3C345 R15259A.MSORT.1

Freq = 42.8560 GHz, Bw = 16.000 MH Calibrated with CL # 3 but no bandpass applied



Lower frame: Milli Ampl Jy Top frame: Phas deg

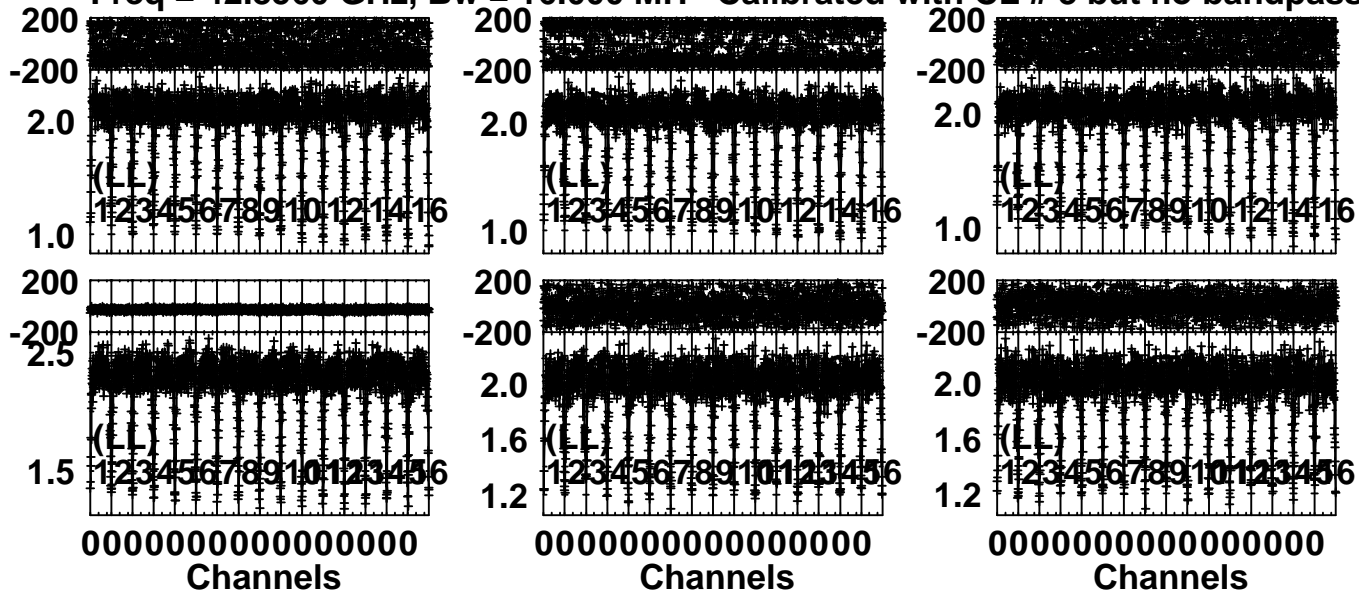
Scalar averaged cross-power spectrum Several baselines displayed

Timerange: 00/04:13:02 to 00/04:17:59

Plot file version 8 created 21-OCT-2015 13:43:20

3C345 R15259A.MSORT.1

Freq = 42.8560 GHz, Bw = 16.000 MH Calibrated with CL # 3 but no bandpass applied



Lower frame: Milli Ampl Jy Top frame: Phas deg

Scalar averaged cross-power spectrum Several baselines displayed

Timerange: 00/04:13:02 to 00/04:17:59