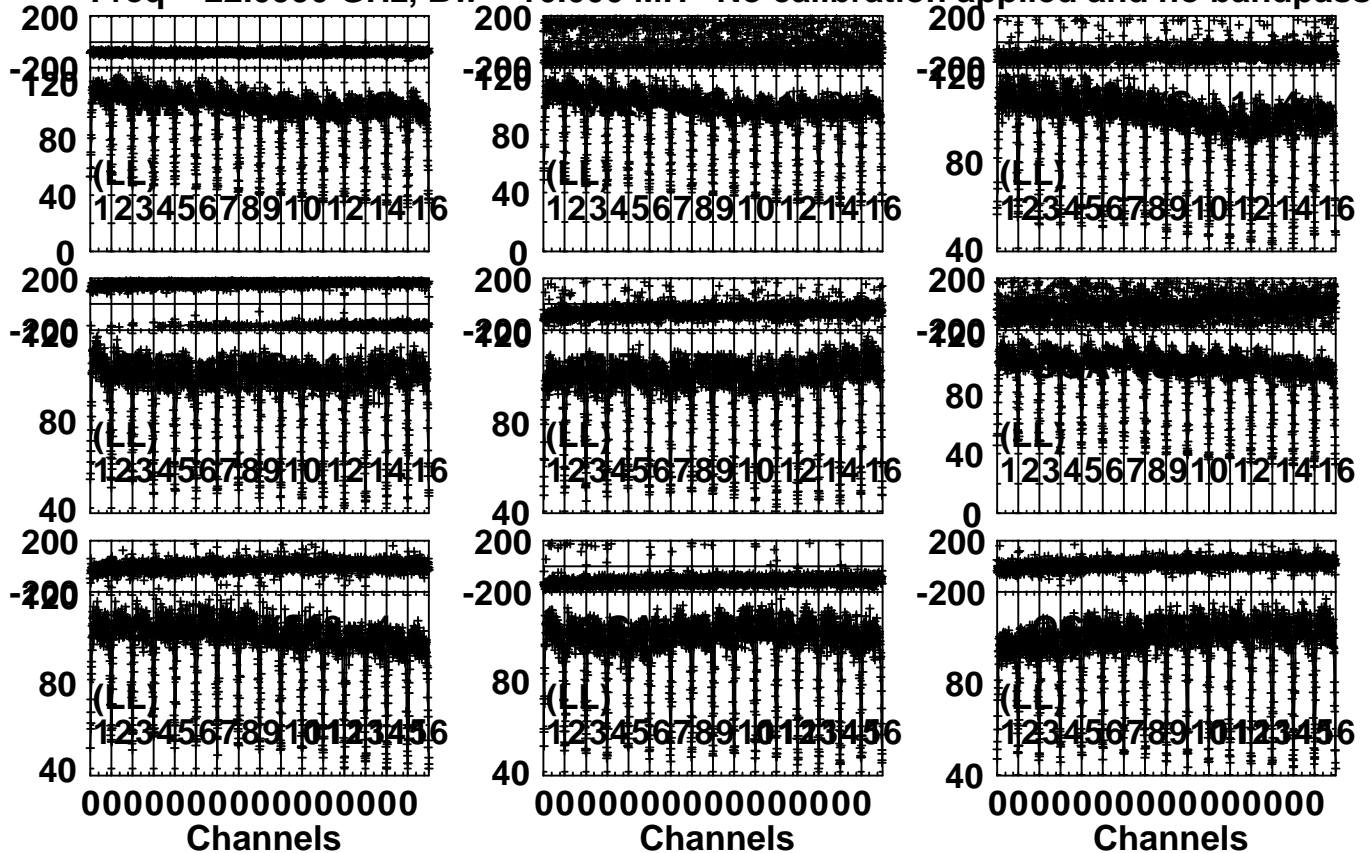


Plot file version 1 created 23-OCT-2015 14:50:31

3C345 R15258A.MSORT.1

Freq = 22.0990 GHz, Bw = 16.000 MH No calibration applied and no bandpass appli



Lower frame: Milli Ampl Jy Top frame: Phas deg

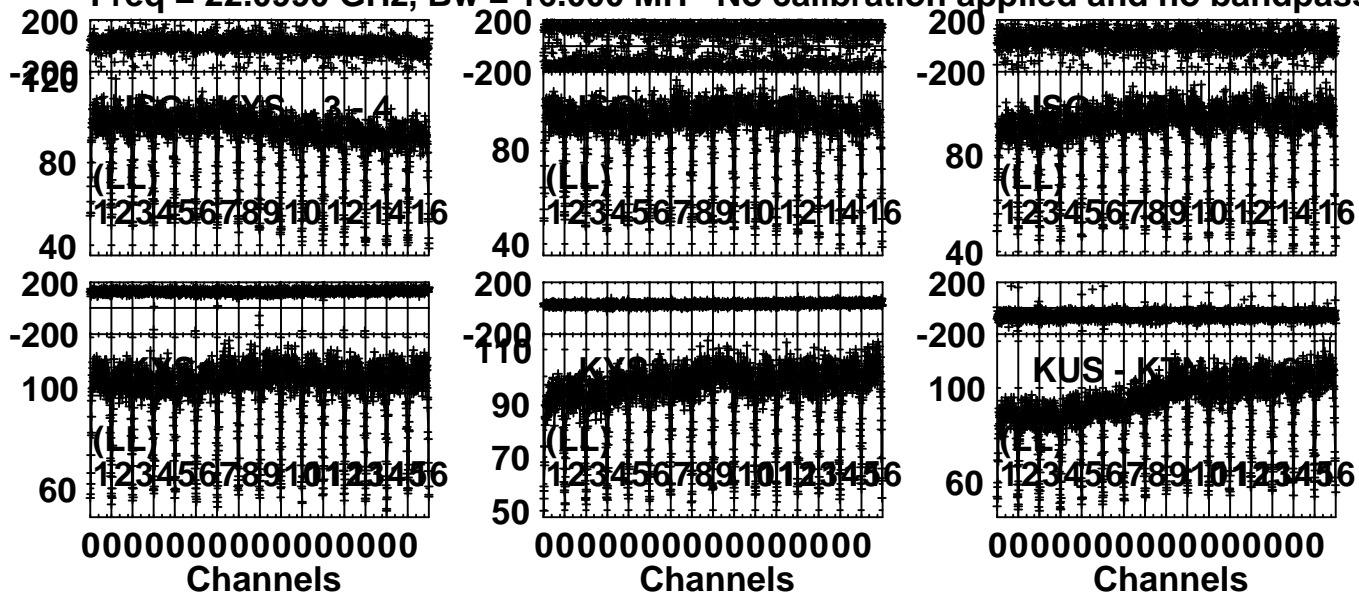
Scalar averaged cross-power spectrum Several baselines displayed

Timerange: 00/04:13:02 to 00/04:17:59

Plot file version 2 created 23-OCT-2015 14:50:32

3C345 R15258A.MSORT.1

Freq = 22.0990 GHz, Bw = 16.000 MH No calibration applied and no bandpass appli

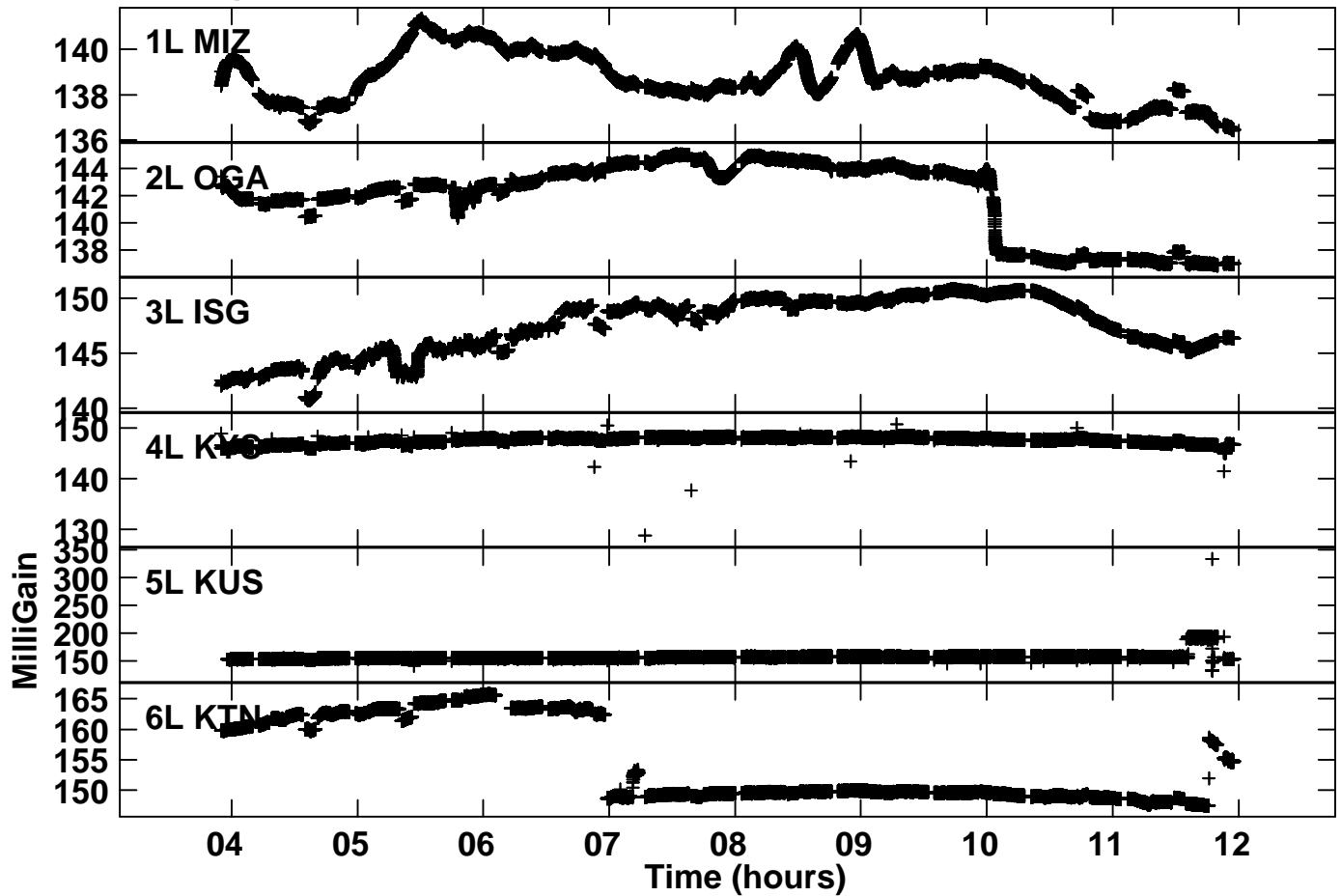


Lower frame: Milli Ampl Jy Top frame: Phas deg

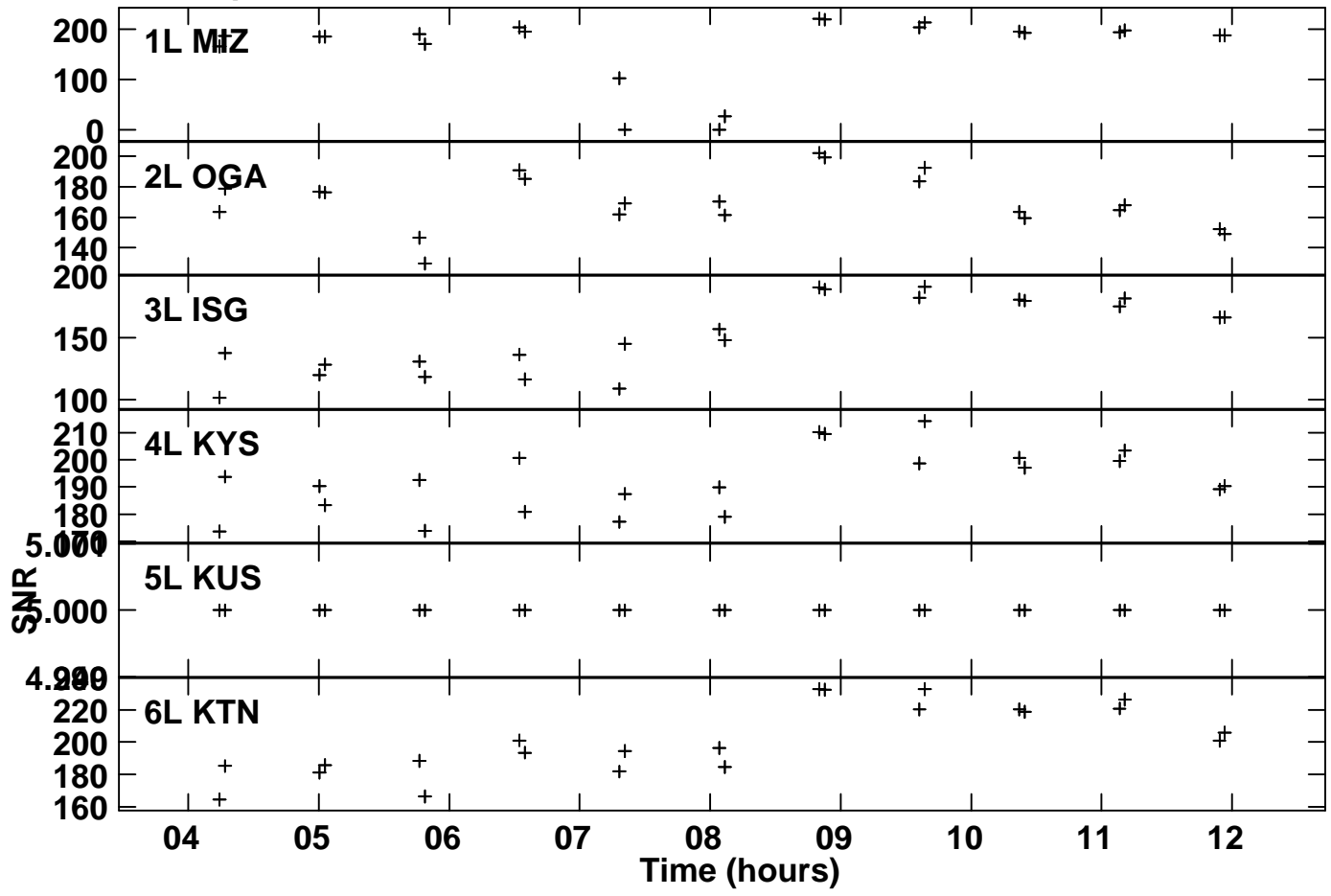
Scalar averaged cross-power spectrum Several baselines displayed

Timerange: 00/04:13:02 to 00/04:17:59

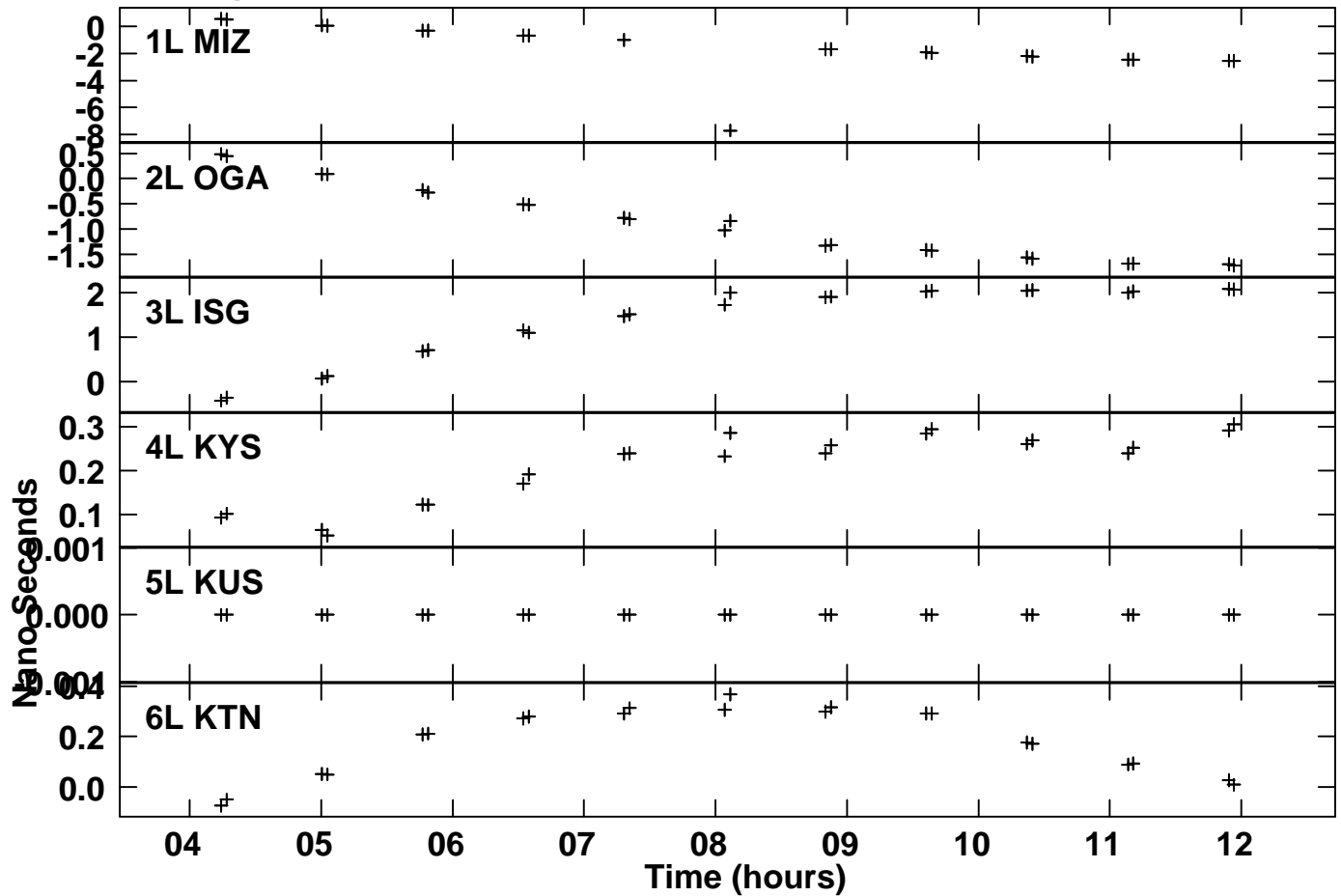
Plot file version 3 created 23-OCT-2015 14:51:26  
Gain amp vs time for R15258A.MSORT.1  
SN 1 Lpol IF 2



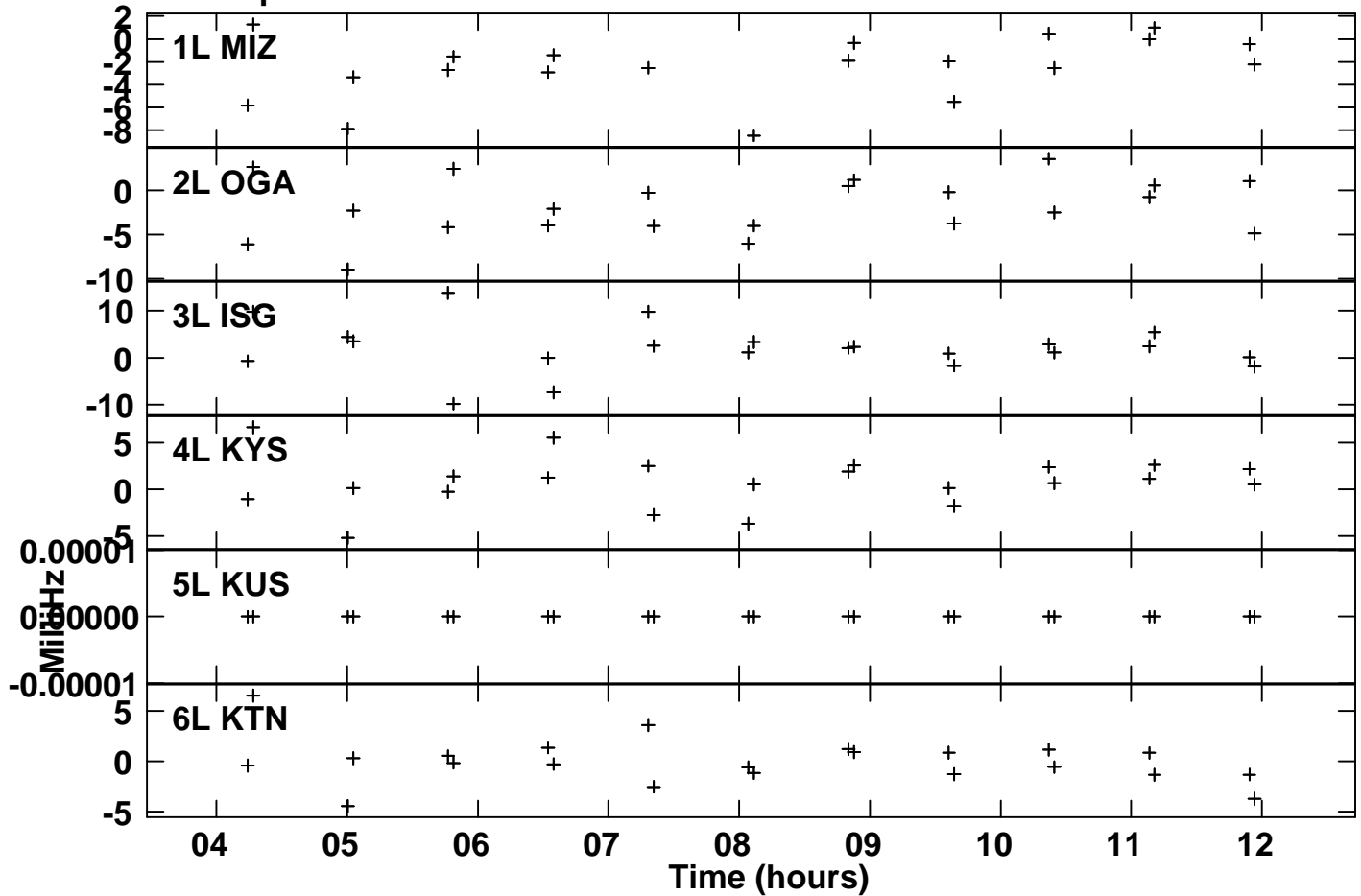
Plot file version 4 created 23-OCT-2015 15:02:31  
 SNR vs time for R15258A.MSORT.1  
 SN 2 Lpol IF 2



Plot file version 5 created 23-OCT-2015 15:02:49  
Delay vs time for R15258A.MSORT.1  
SN 2 Lpol IF 2



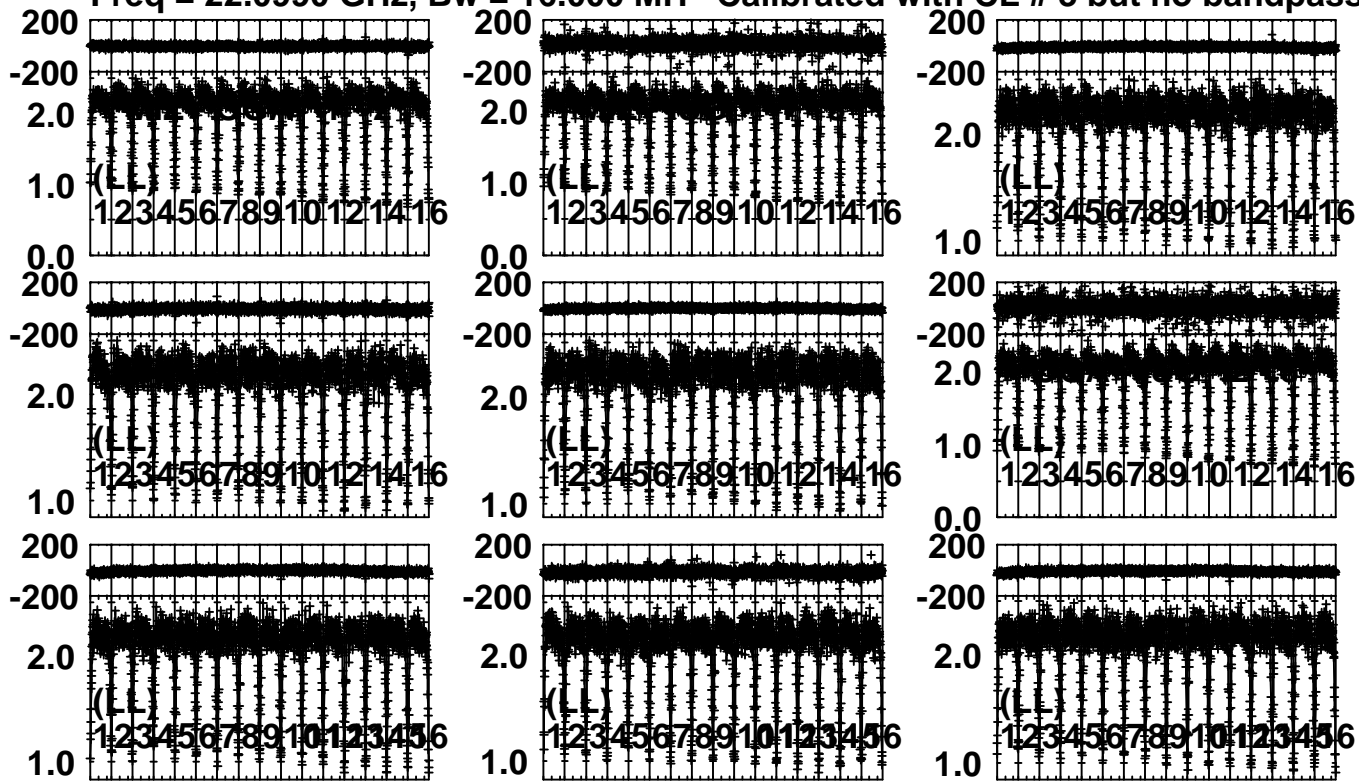
Plot file version 6 created 23-OCT-2015 15:03:06  
Rate vs time for R15258A.MSORT.1  
SN 2 Lpol IF 2



Plot file version 7 created 23-OCT-2015 15:03:34

3C345 R15258A.MSORT.1

Freq = 22.0990 GHz, Bw = 16.000 MH Calibrated with CL # 3 but no bandpass applied



0000000000000000

Channels

0000000000000000

Channels

0000000000000000

Channels

Lower frame: Milli Ampl Jy Top frame: Phas deg

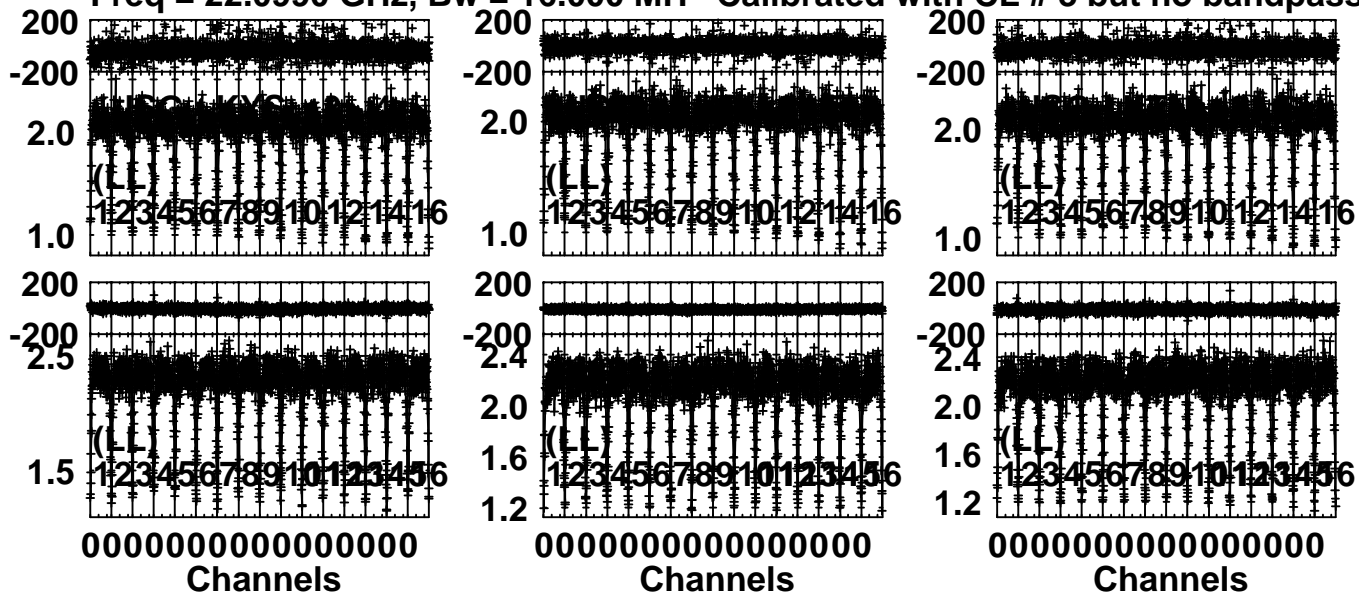
Scalar averaged cross-power spectrum Several baselines displayed

Timerange: 00/04:13:02 to 00/04:17:59

Plot file version 8 created 23-OCT-2015 15:03:36

3C345 R15258A.MSORT.1

Freq = 22.0990 GHz, Bw = 16.000 MH Calibrated with CL # 3 but no bandpass applied



Lower frame: Milli Ampl Jy Top frame: Phas deg

Scalar averaged cross-power spectrum Several baselines displayed

Timerange: 00/04:13:02 to 00/04:17:59