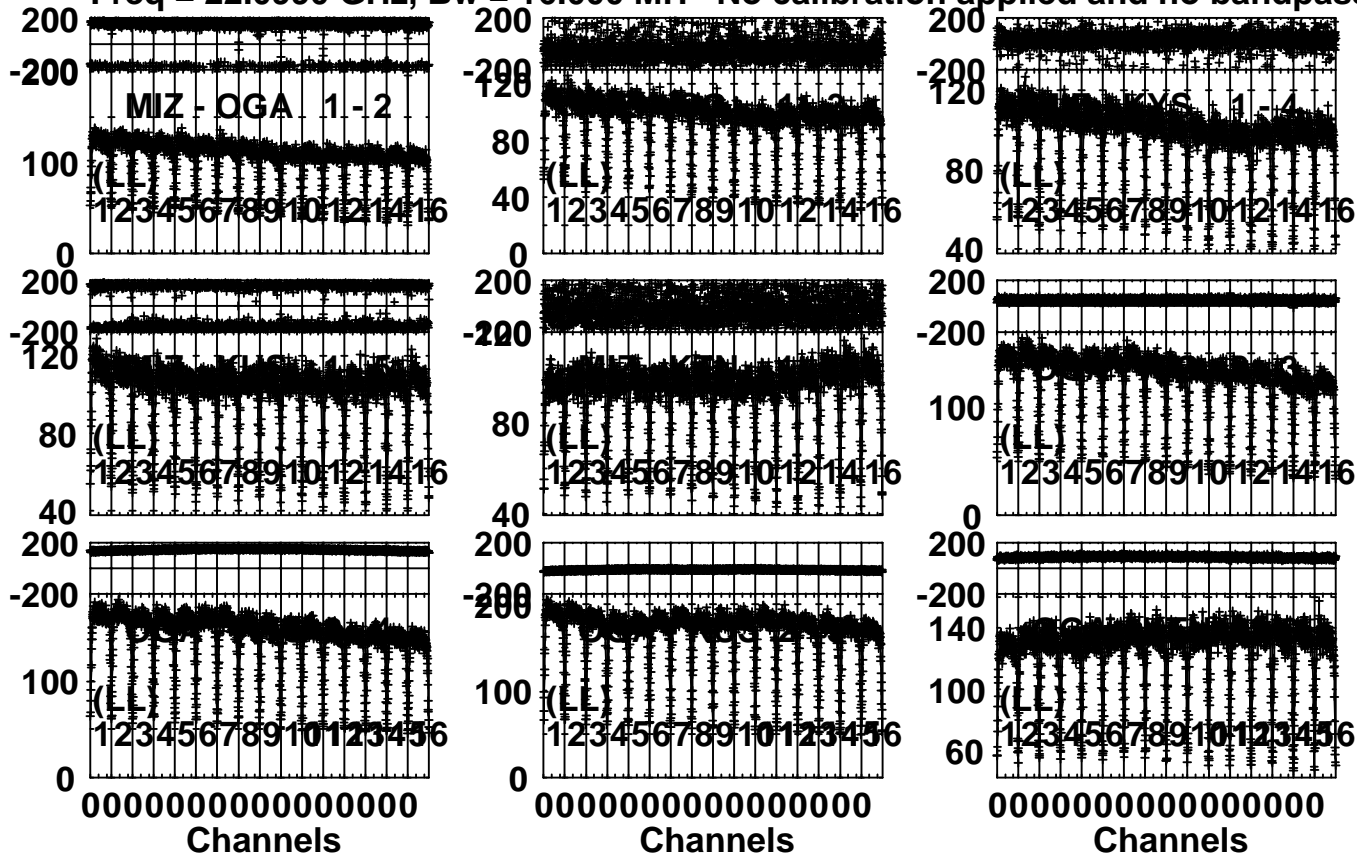


Plot file version 1 created 04-OCT-2015 13:06:51

3C279 R15244A.MSORT.1

Freq = 22.0990 GHz, Bw = 16.000 MH No calibration applied and no bandpass appli



Lower frame: Milli Ampl Jy Top frame: Phas deg

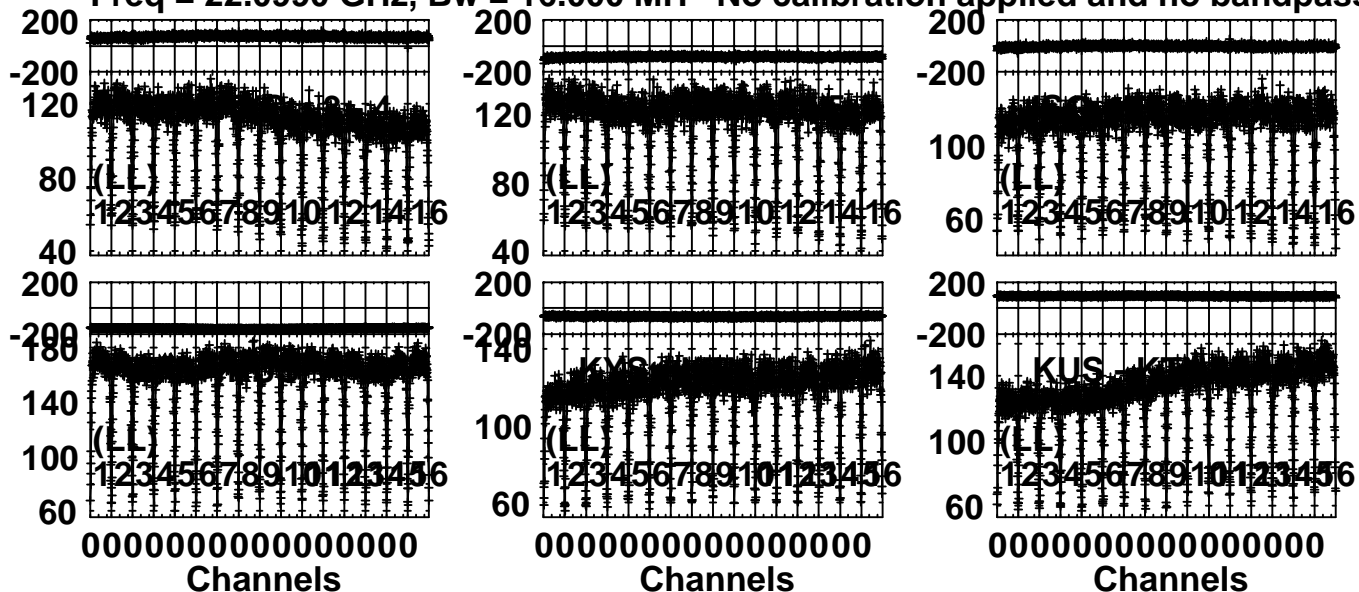
Scalar averaged cross-power spectrum Several baselines displayed

Timerange: 00/06:25:01 to 00/06:29:59

Plot file version 2 created 04-OCT-2015 13:06:52

3C279 R15244A.MSORT.1

Freq = 22.0990 GHz, Bw = 16.000 MH No calibration applied and no bandpass appli

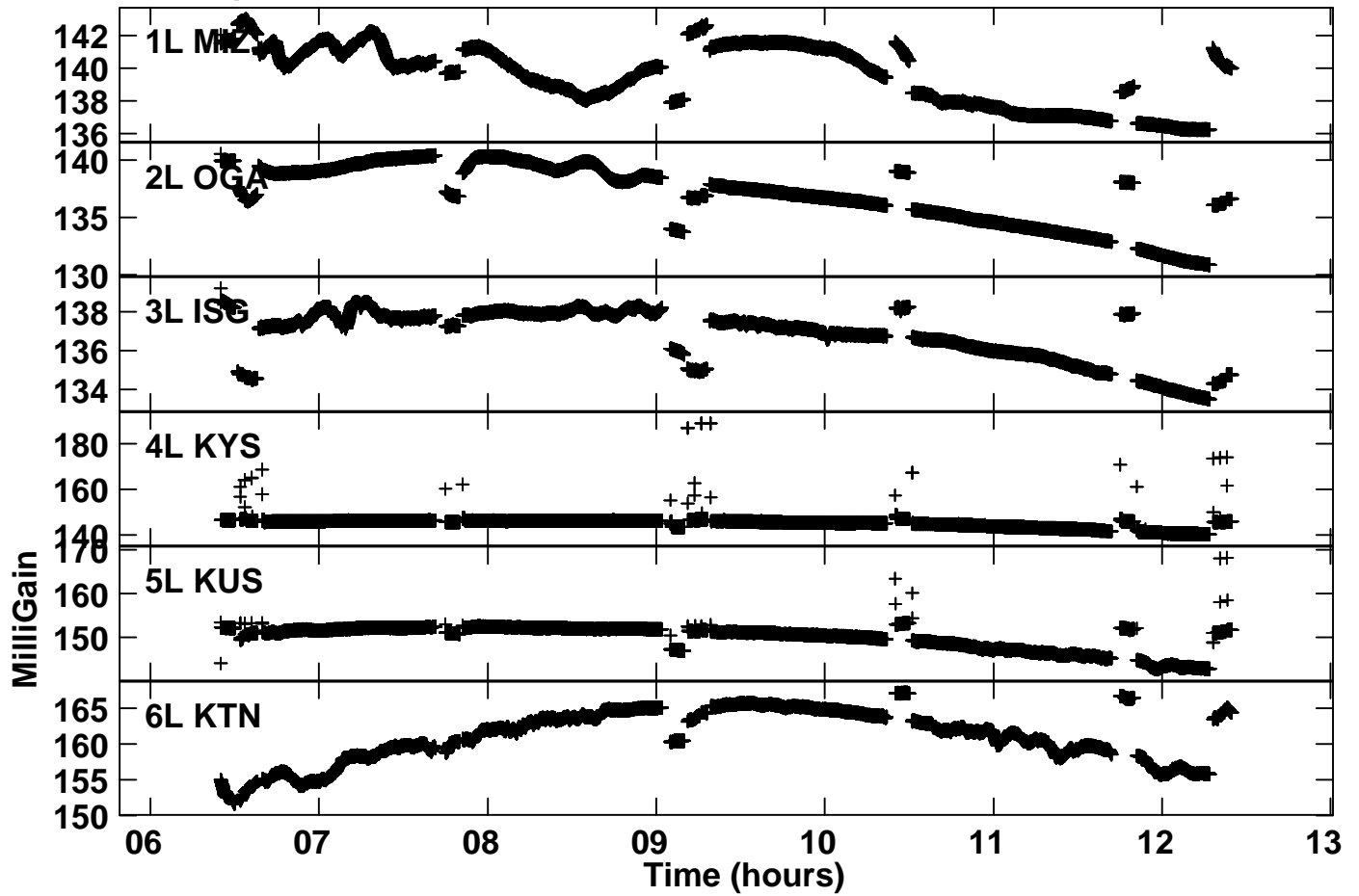


Lower frame: Milli Ampl Jy Top frame: Phas deg

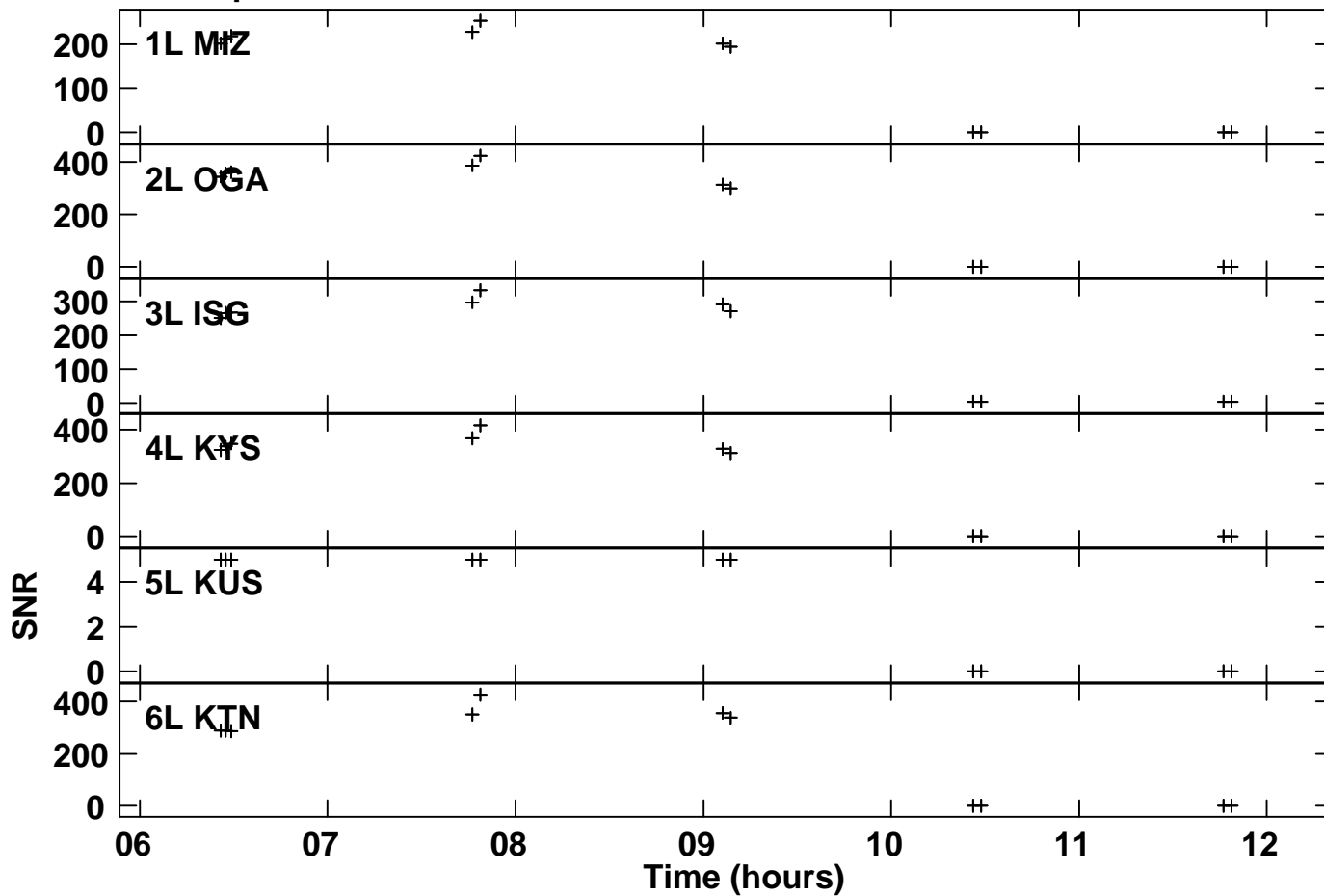
Scalar averaged cross-power spectrum Several baselines displayed

Timerange: 00/06:25:01 to 00/06:29:59

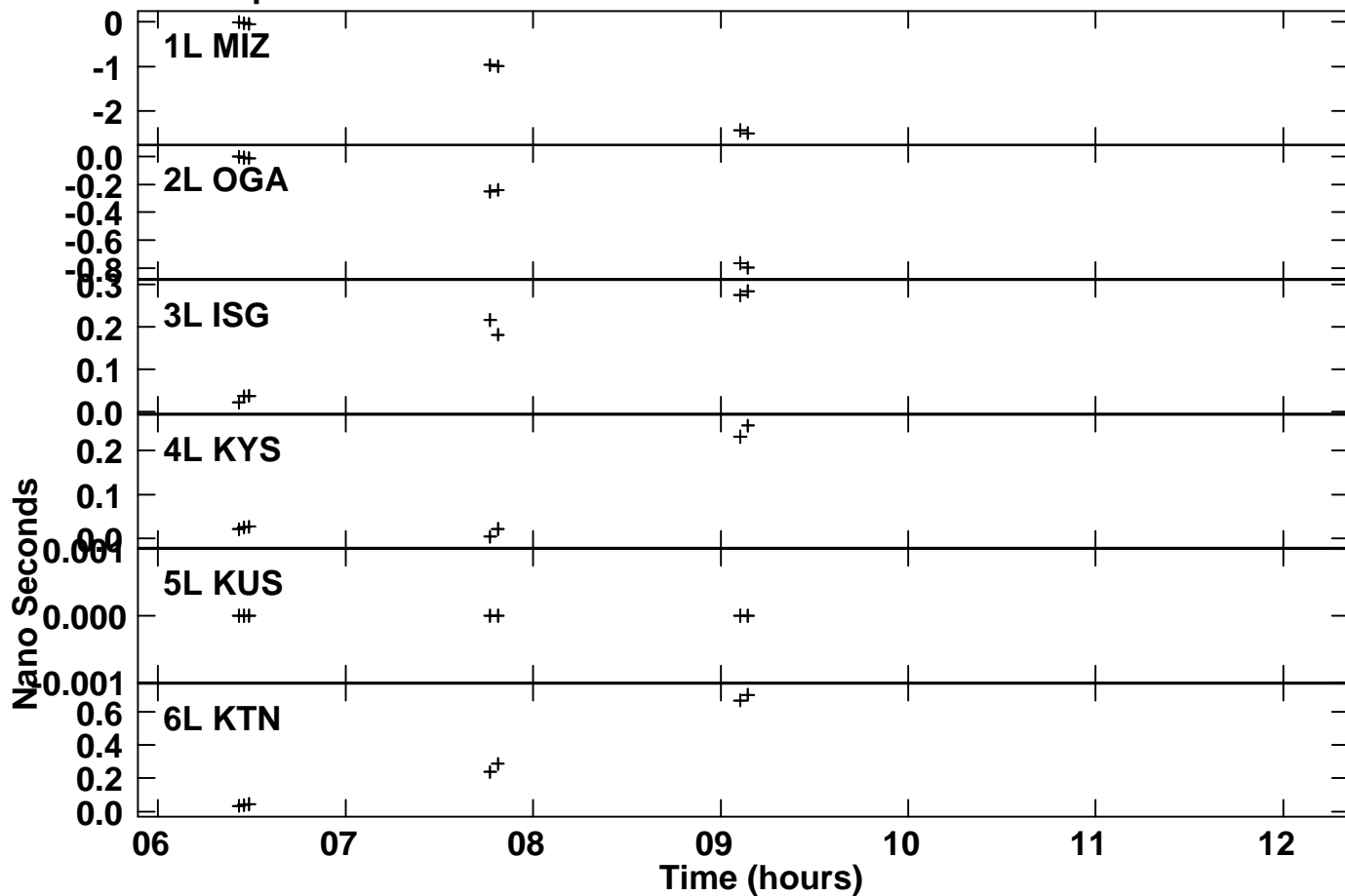
Plot file version 3 created 04-OCT-2015 13:07:25
Gain amp vs time for R15244A.MSORT.1
SN 1 Lpol IF 2



Plot file version 4 created 04-OCT-2015 13:09:02
SNR vs time for R15244A.MSORT.1
SN 2 Lpol IF 2



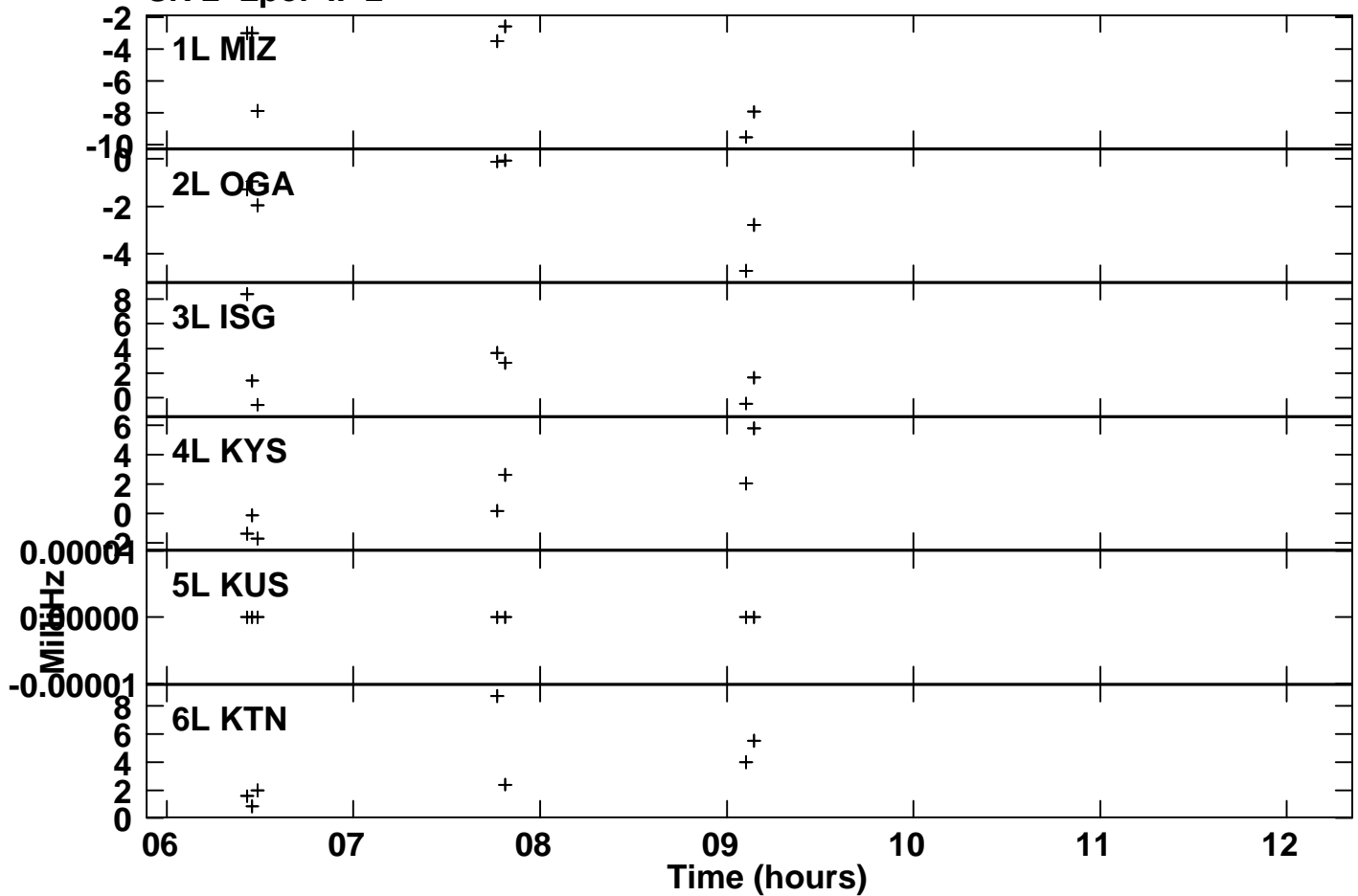
Plot file version 5 created 04-OCT-2015 13:09:15
Delay vs time for R15244A.MSORT.1
SN 2 Lpol IF 2



Plot file version 6 created 04-OCT-2015 13:09:38

Rate vs time for R15244A.MSORT.1

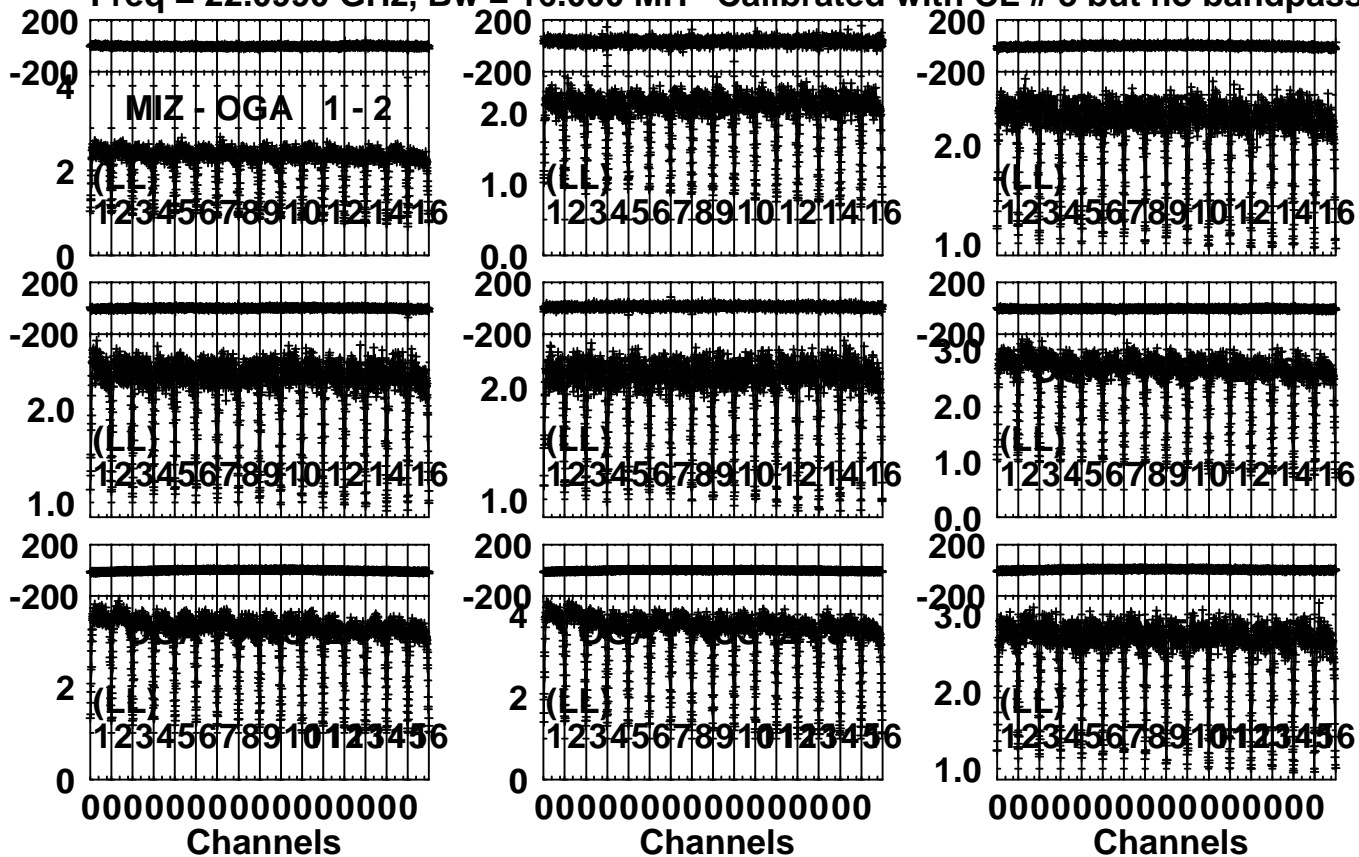
SN 2 Lpol IF 2



Plot file version 7 created 04-OCT-2015 13:10:09

3C279 R15244A.MSORT.1

Freq = 22.0990 GHz, Bw = 16.000 MH Calibrated with CL # 3 but no bandpass applied



Lower frame: Milli Ampl Jy Top frame: Phas deg

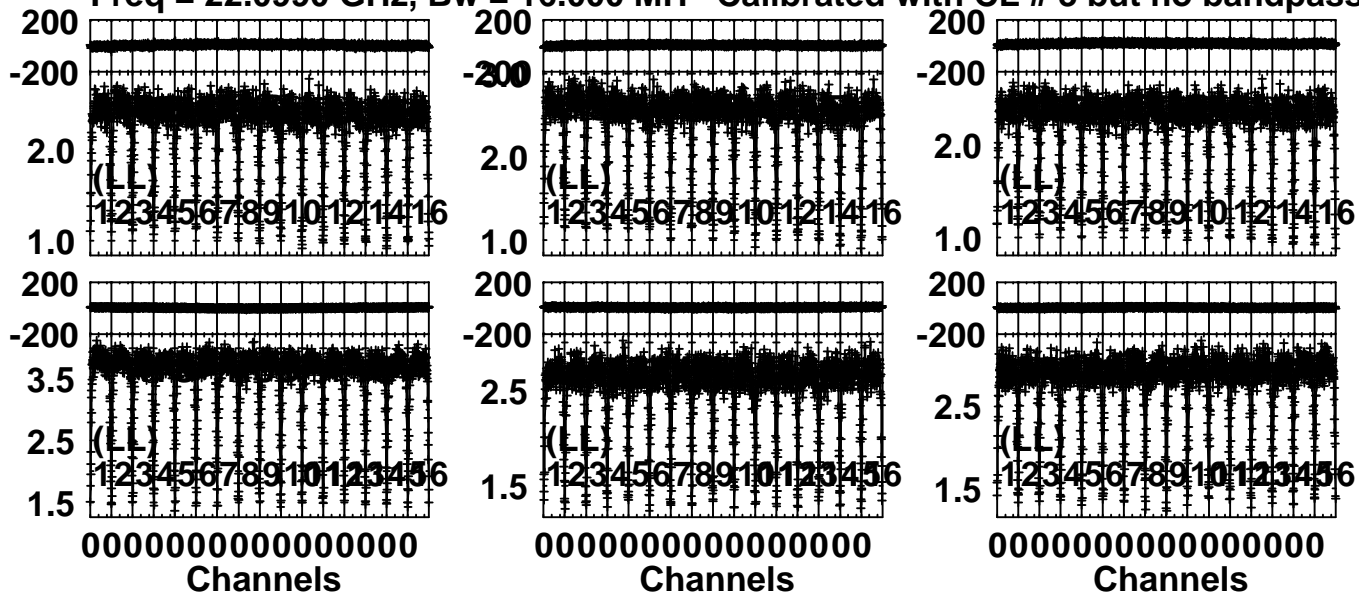
Scalar averaged cross-power spectrum Several baselines displayed

Timerange: 00/06:25:01 to 00/06:29:59

Plot file version 8 created 04-OCT-2015 13:10:11

3C279 R15244A.MSORT.1

Freq = 22.0990 GHz, Bw = 16.000 MH Calibrated with CL # 3 but no bandpass applied



Lower frame: Milli Ampl Jy Top frame: Phas deg

Scalar averaged cross-power spectrum Several baselines displayed

Timerange: 00/06:25:01 to 00/06:29:59