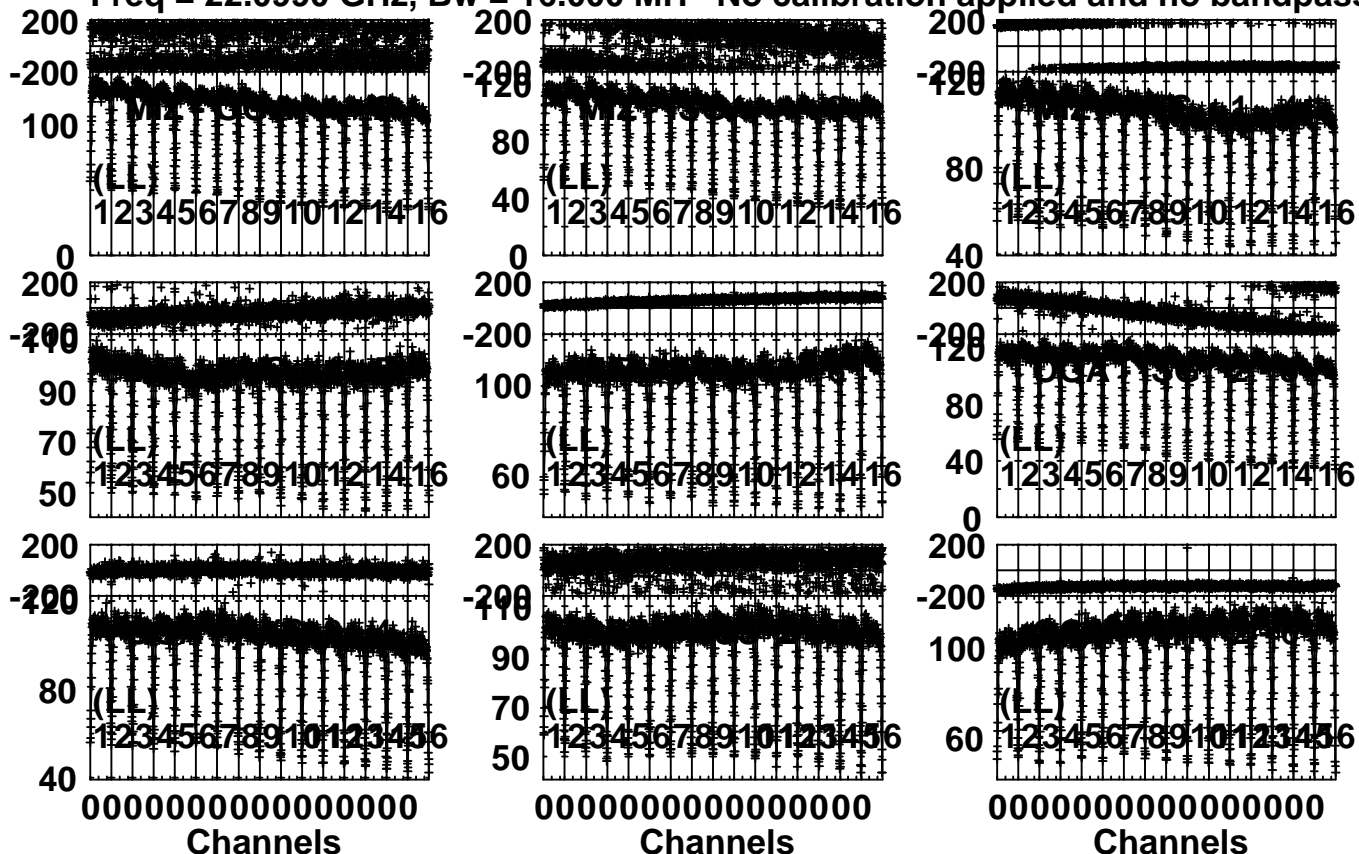


Plot file version 1 created 02-OCT-2015 21:03:48

4C39.25 R15243A.MSORT.1

Freq = 22.0990 GHz, Bw = 16.000 MH No calibration applied and no bandpass appli



Lower frame: Milli Ampl Jy Top frame: Phas deg

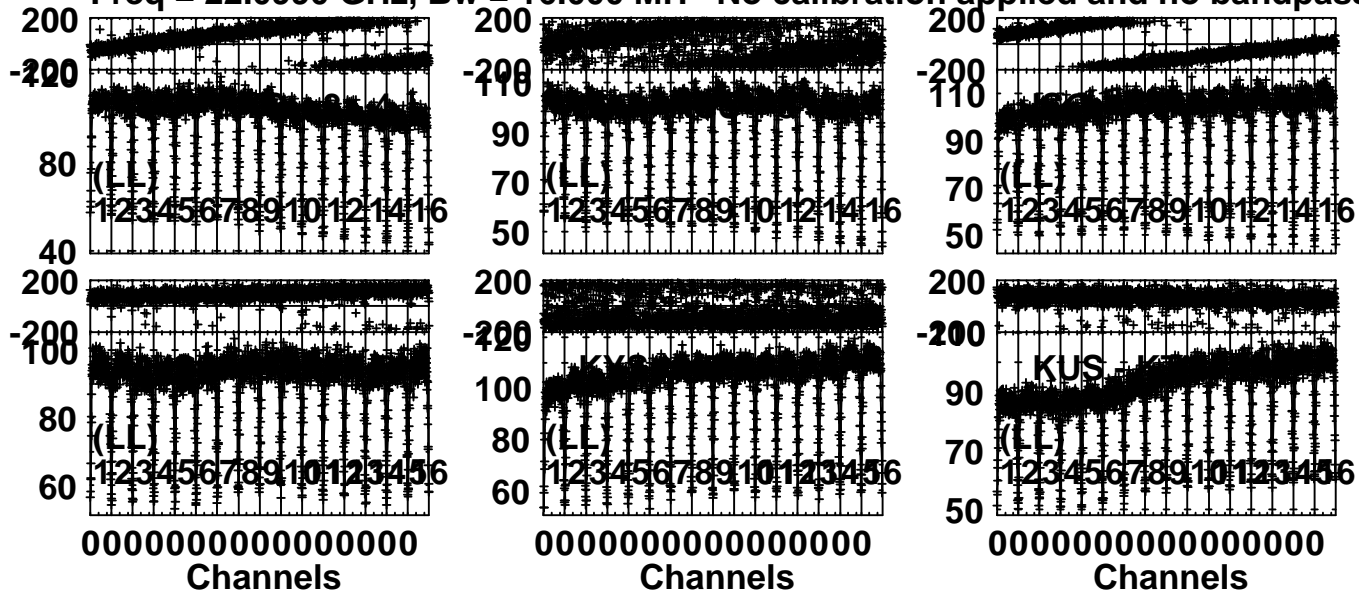
Scalar averaged cross-power spectrum Several baselines displayed

Timerange: 00/22:00:02 to 00/22:11:58

Plot file version 2 created 02-OCT-2015 21:03:50

4C39.25 R15243A.MSORT.1

Freq = 22.0990 GHz, Bw = 16.000 MH No calibration applied and no bandpass appli

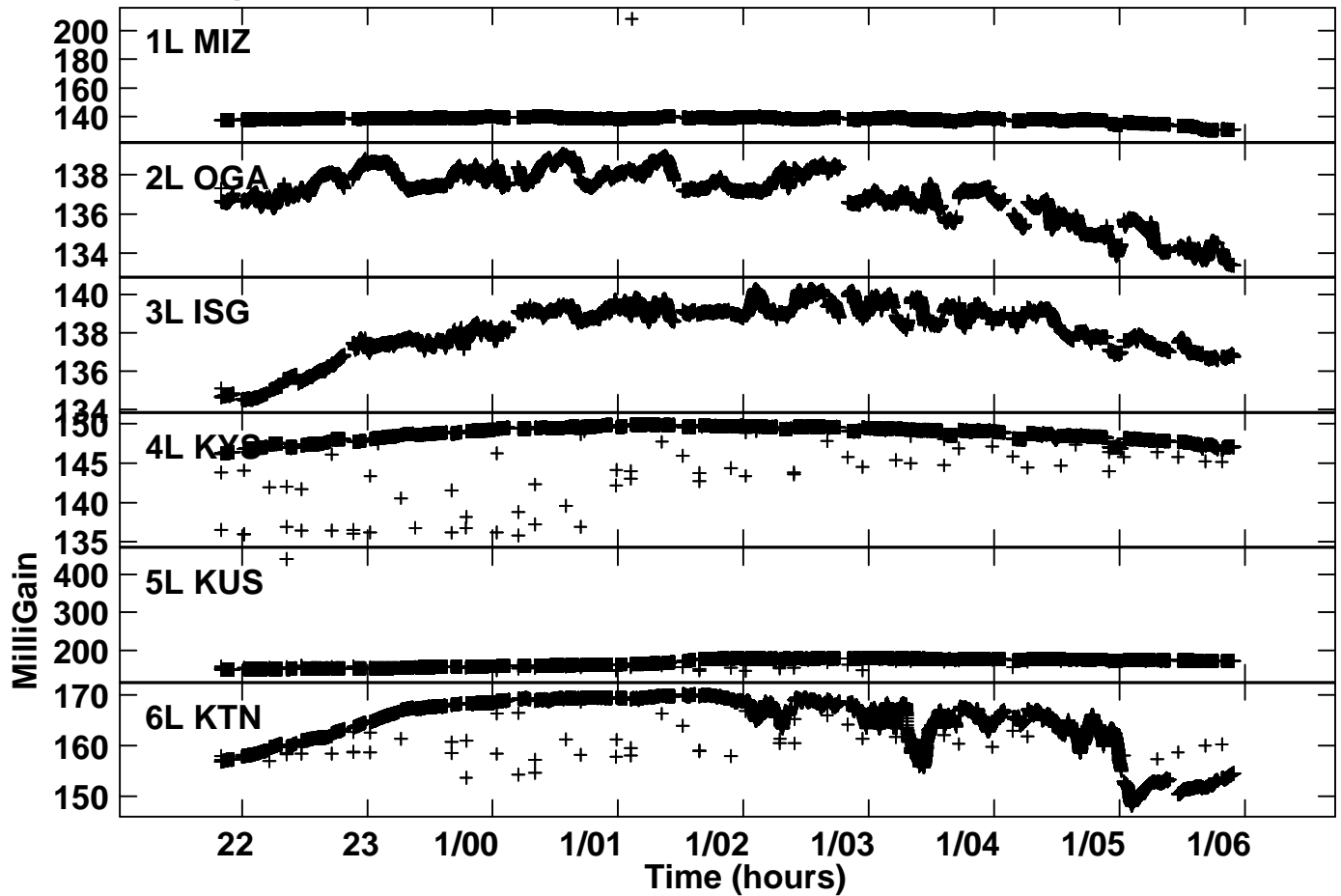


Lower frame: Milli Ampl Jy Top frame: Phas deg

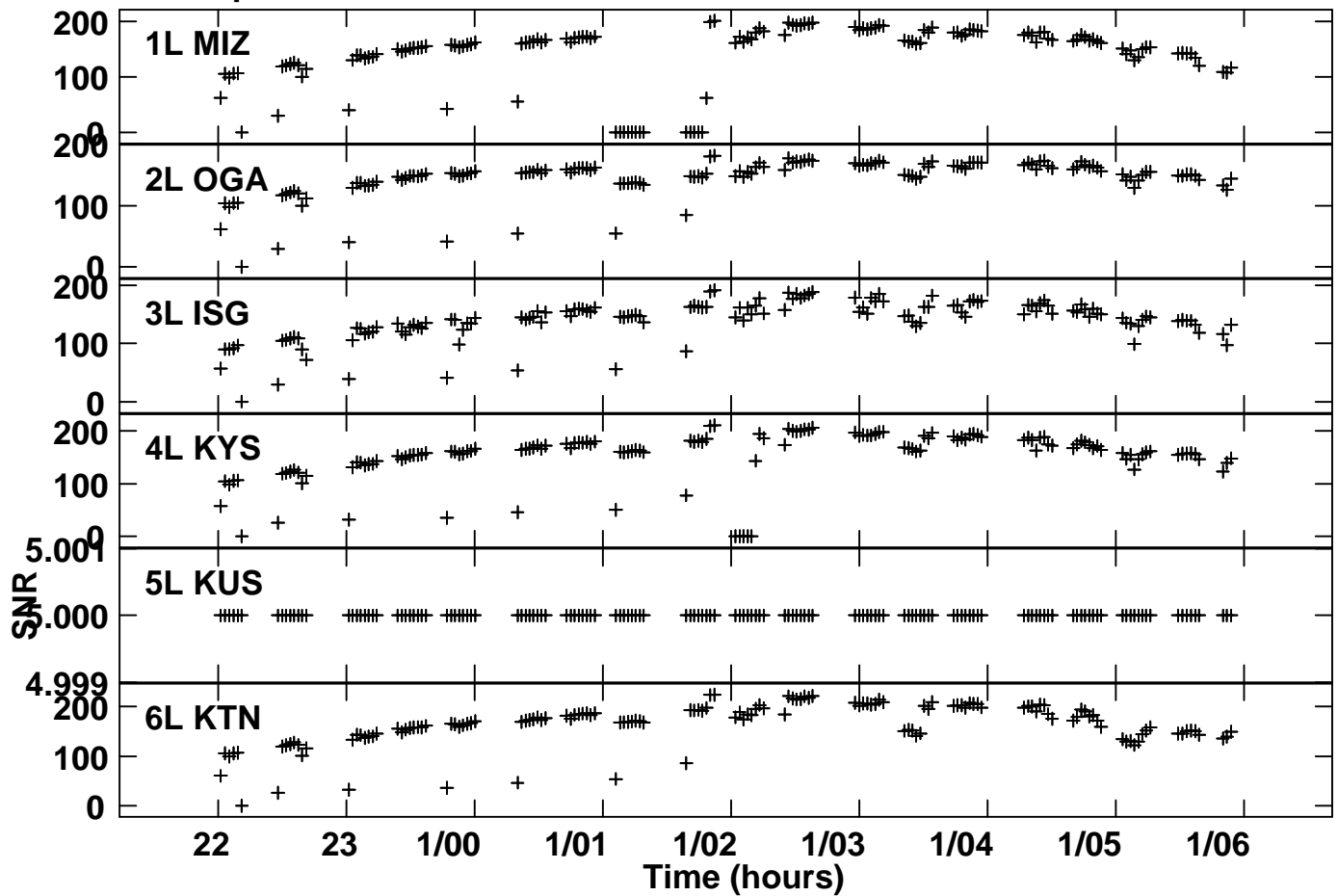
Scalar averaged cross-power spectrum Several baselines displayed

Timerange: 00/22:00:02 to 00/22:11:58

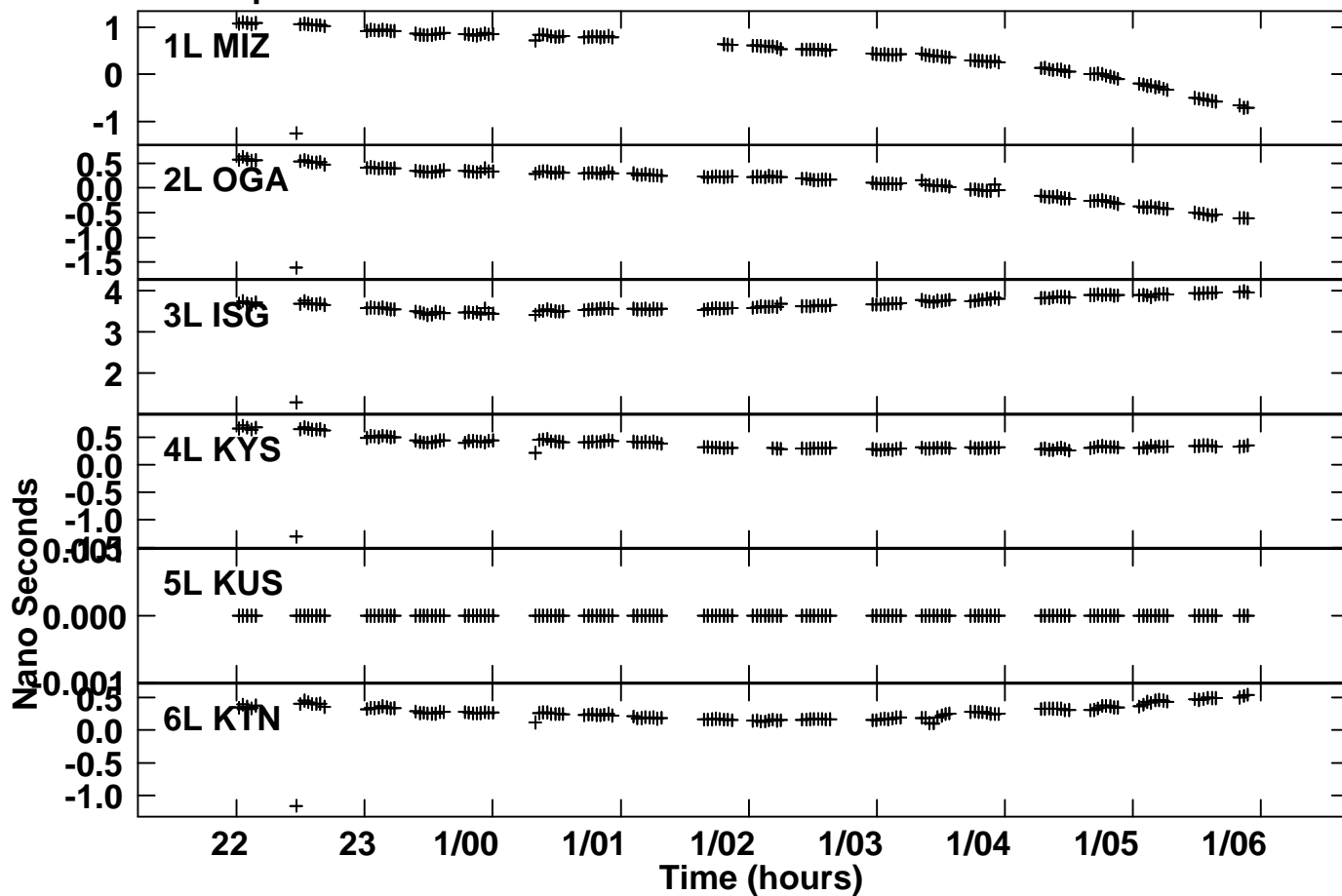
Plot file version 3 created 02-OCT-2015 21:04:19  
Gain amp vs time for R15243A.MSORT.1  
SN 1 Lpol IF 2



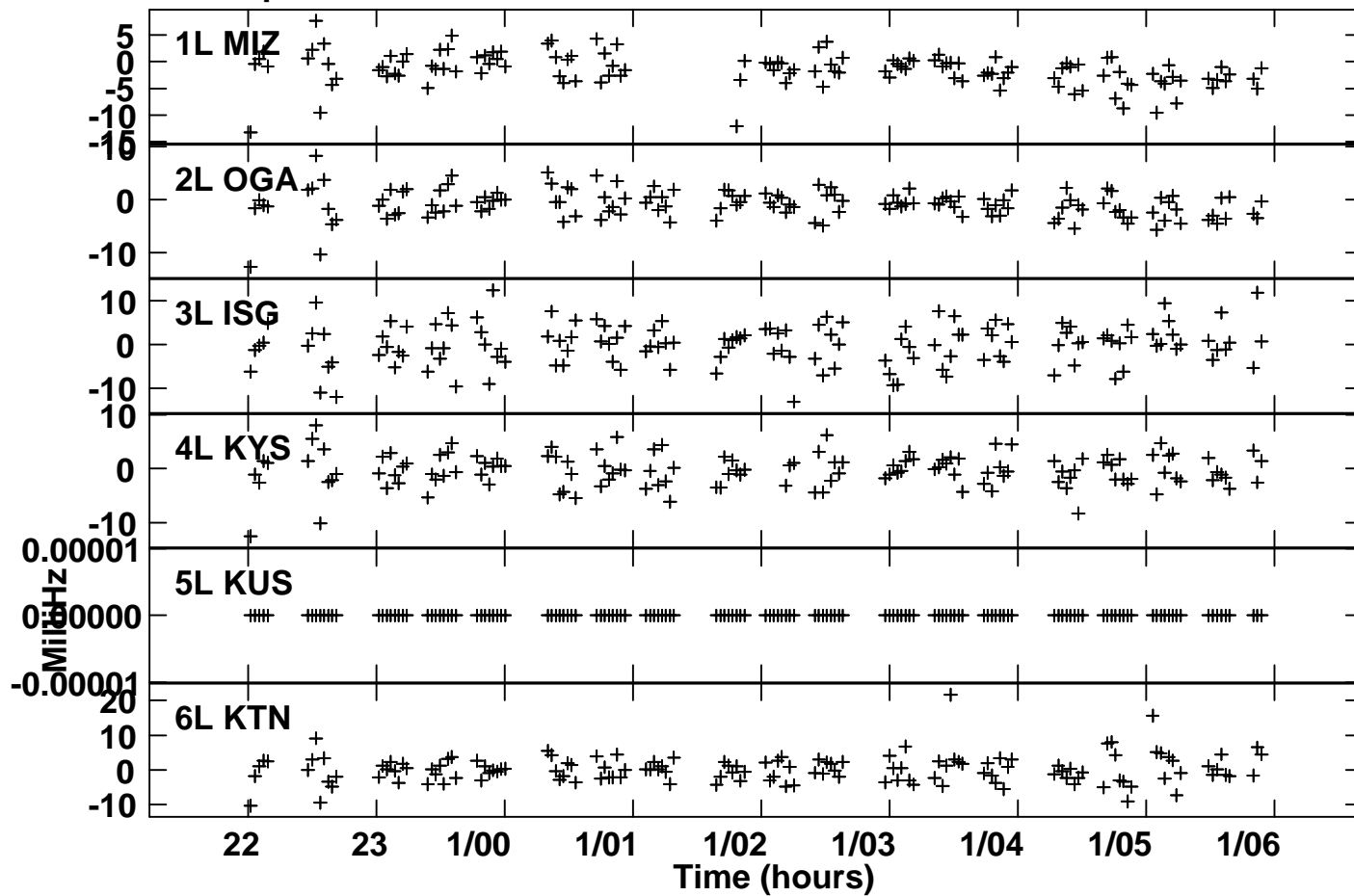
Plot file version 4 created 02-OCT-2015 21:04:35  
SNR vs time for R15243A.MSORT.1  
SN 2 Lpol IF 2



Plot file version 5 created 02-OCT-2015 21:04:40  
Delay vs time for R15243A.MSORT.1  
SN 2 Lpol IF 2



Plot file version 6 created 02-OCT-2015 21:04:44  
Rate vs time for R15243A.MSORT.1  
SN 2 Lpol IF 2

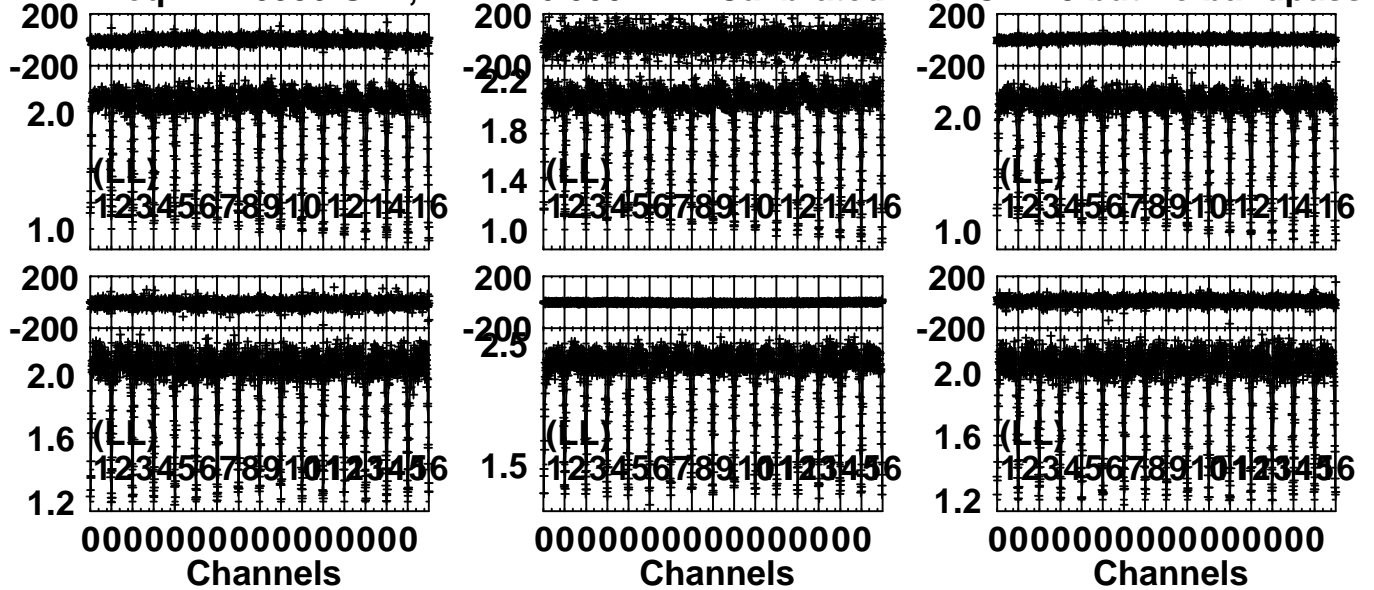




Plot file version 8 created 02-OCT-2015 21:05:03

4C39.25 R15243A.MSORT.1

Freq = 22.0990 GHz, Bw = 16.000 MH Calibrated with CL # 3 but no bandpass applied



Lower frame: Milli Ampl Jy Top frame: Phas deg

Scalar averaged cross-power spectrum Several baselines displayed

Timerange: 00/22:00:02 to 00/22:11:58