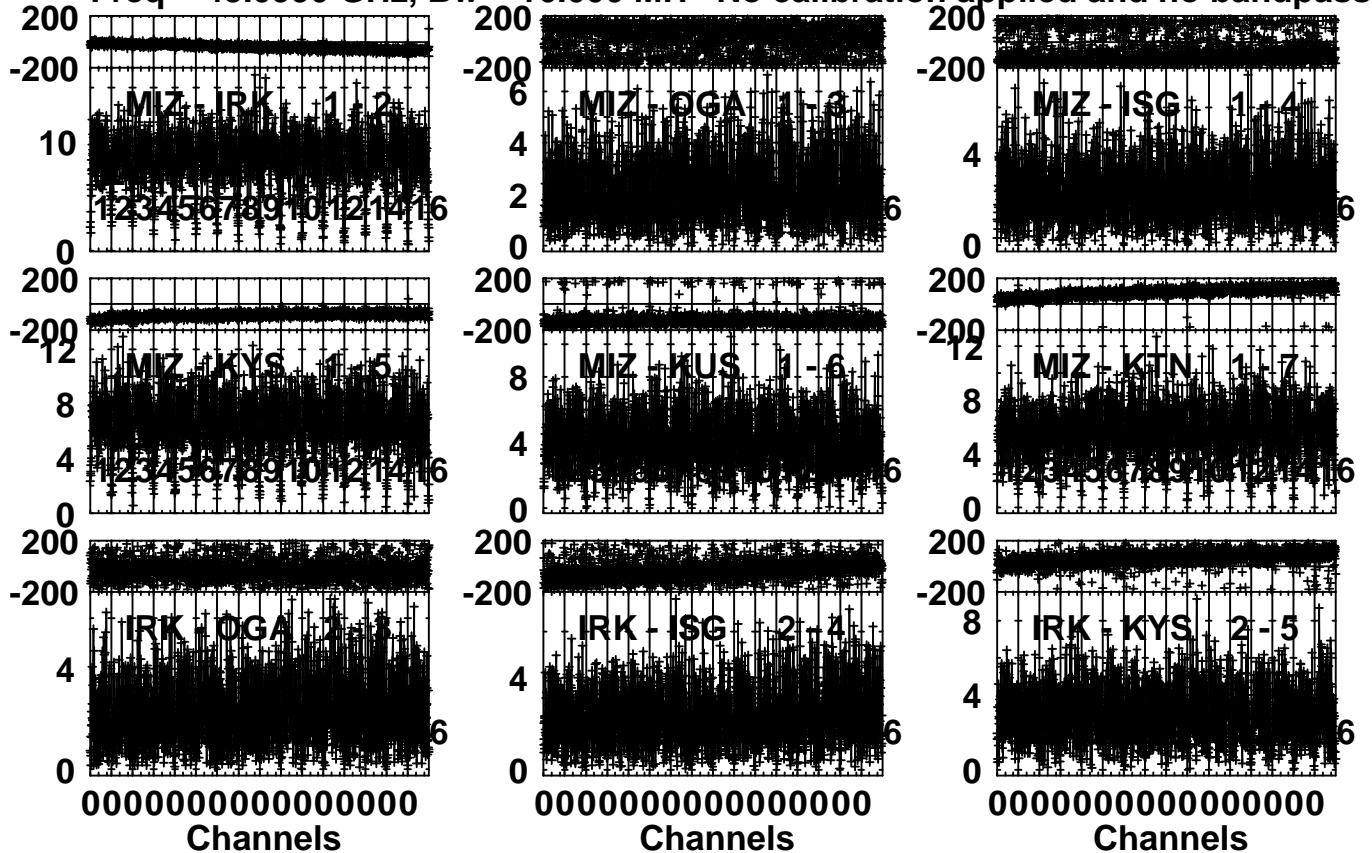


Plot file version 1 created 16-NOV-2015 11:13:28

3C84 R15231A.MSORT.1

Freq = 43.0990 GHz, Bw = 16.000 MH No calibration applied and no bandpass appli



Lower frame: Milli Ampl Jy Top frame: Phas deg

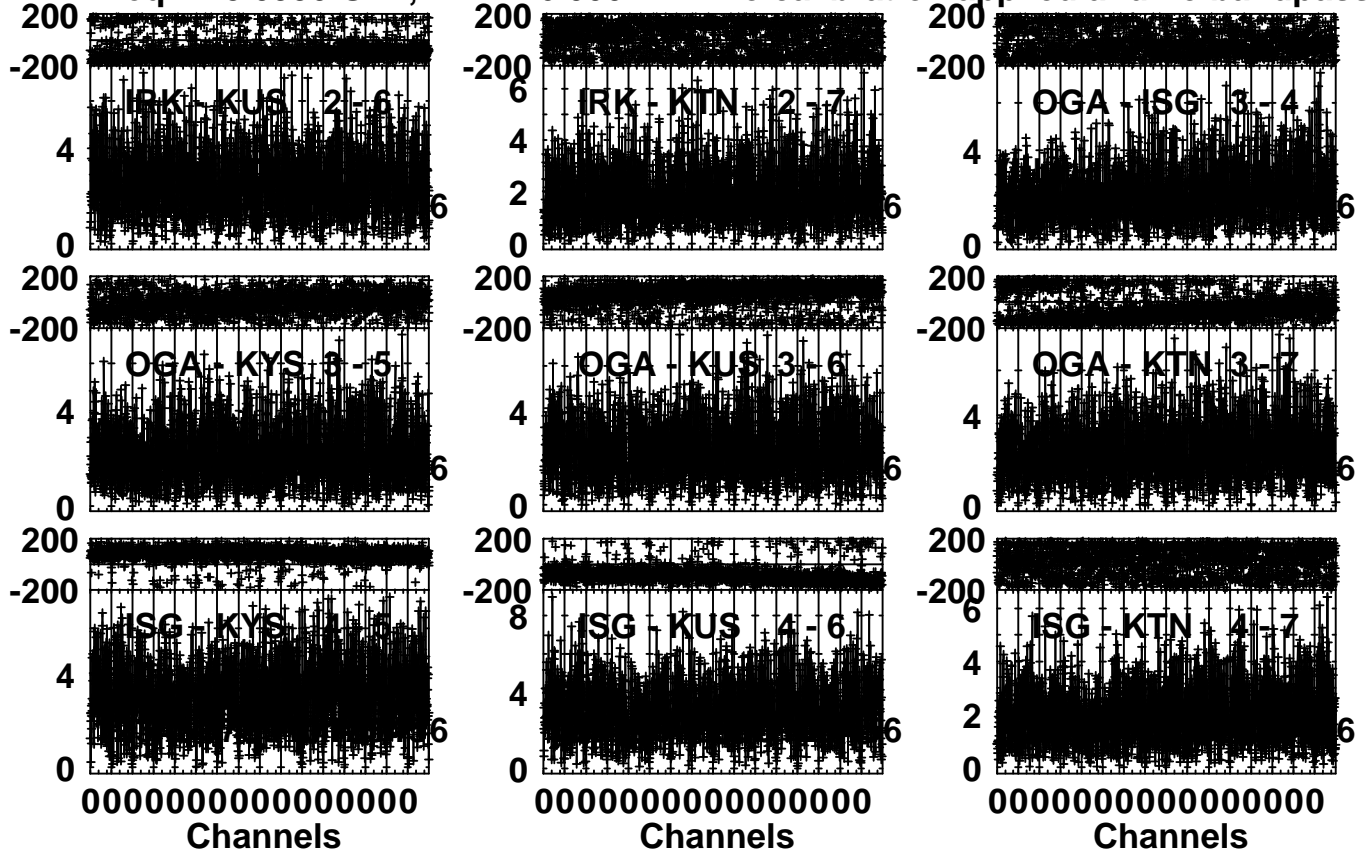
Vector averaged cross-power spectrum Several baselines displayed

Timerange: 00/17:40:01 to 00/18:40:00

Plot file version 2 created 16-NOV-2015 11:13:33

3C84 R15231A.MSORT.1

Freq = 43.0990 GHz, Bw = 16.000 MH No calibration applied and no bandpass appli



Lower frame: Milli Ampl Jy Top frame: Phas deg

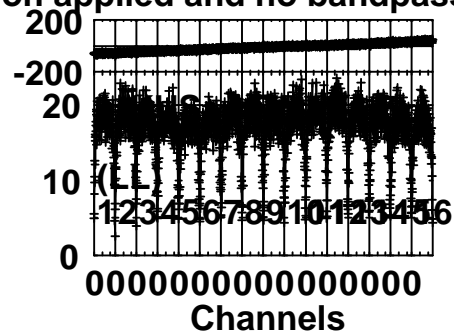
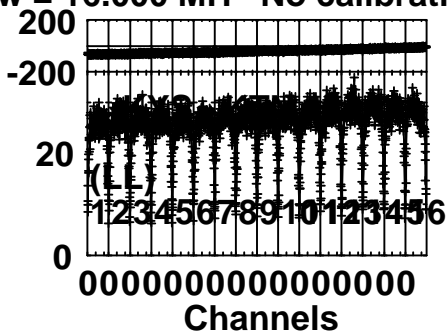
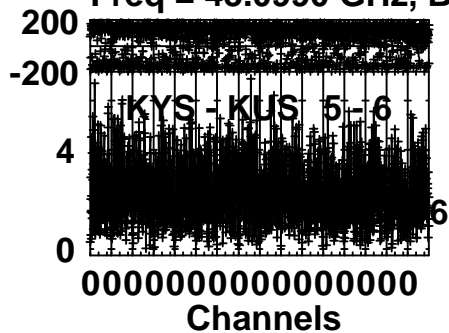
Vector averaged cross-power spectrum Several baselines displayed

Timerange: 00/17:40:01 to 00/18:40:00

Plot file version 3 created 16-NOV-2015 11:13:37

3C84 R15231A.MSORT.1

Freq = 43.0990 GHz, Bw = 16.000 MH No calibration applied and no bandpass appli

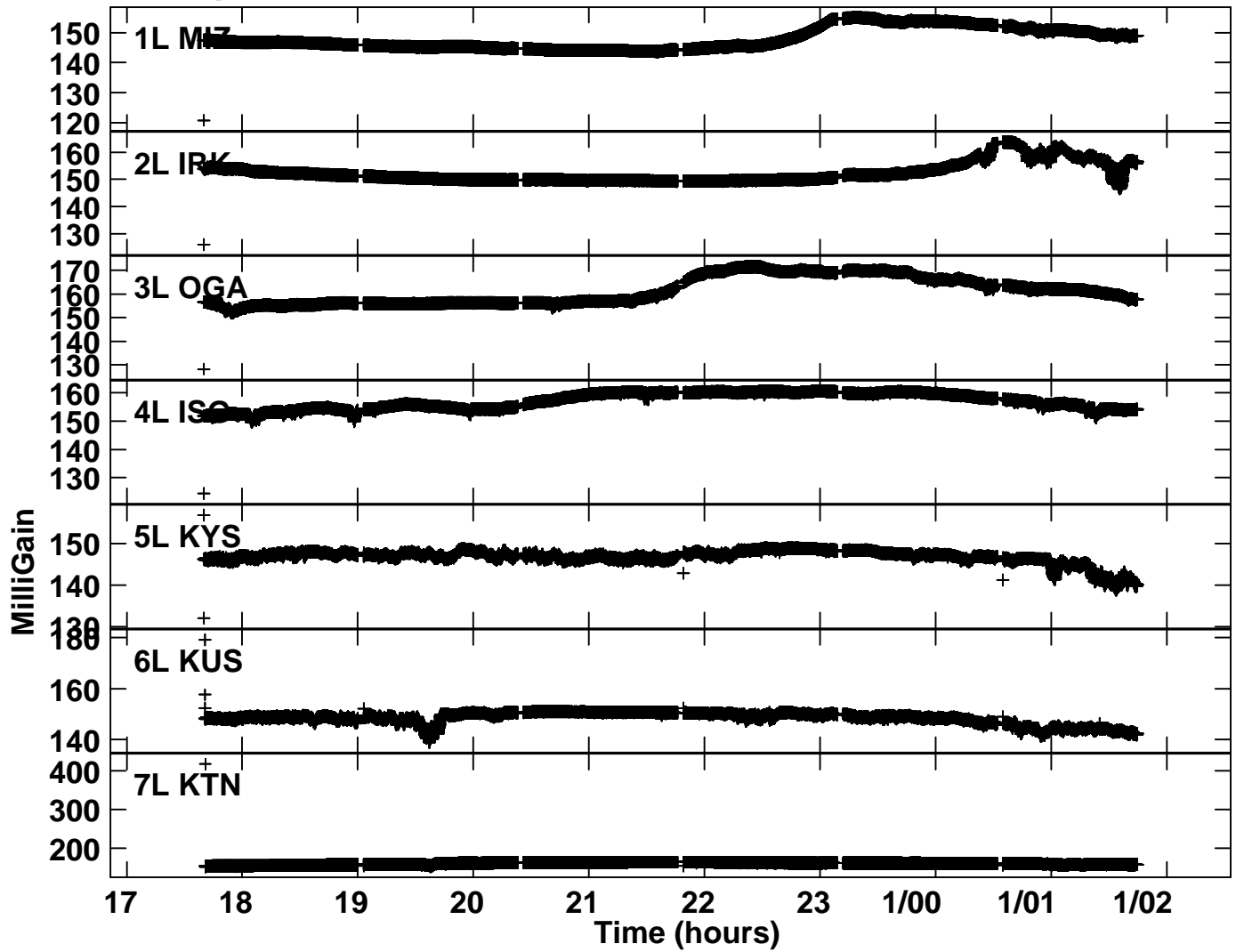


Lower frame: Milli Ampl Jy Top frame: Phas deg

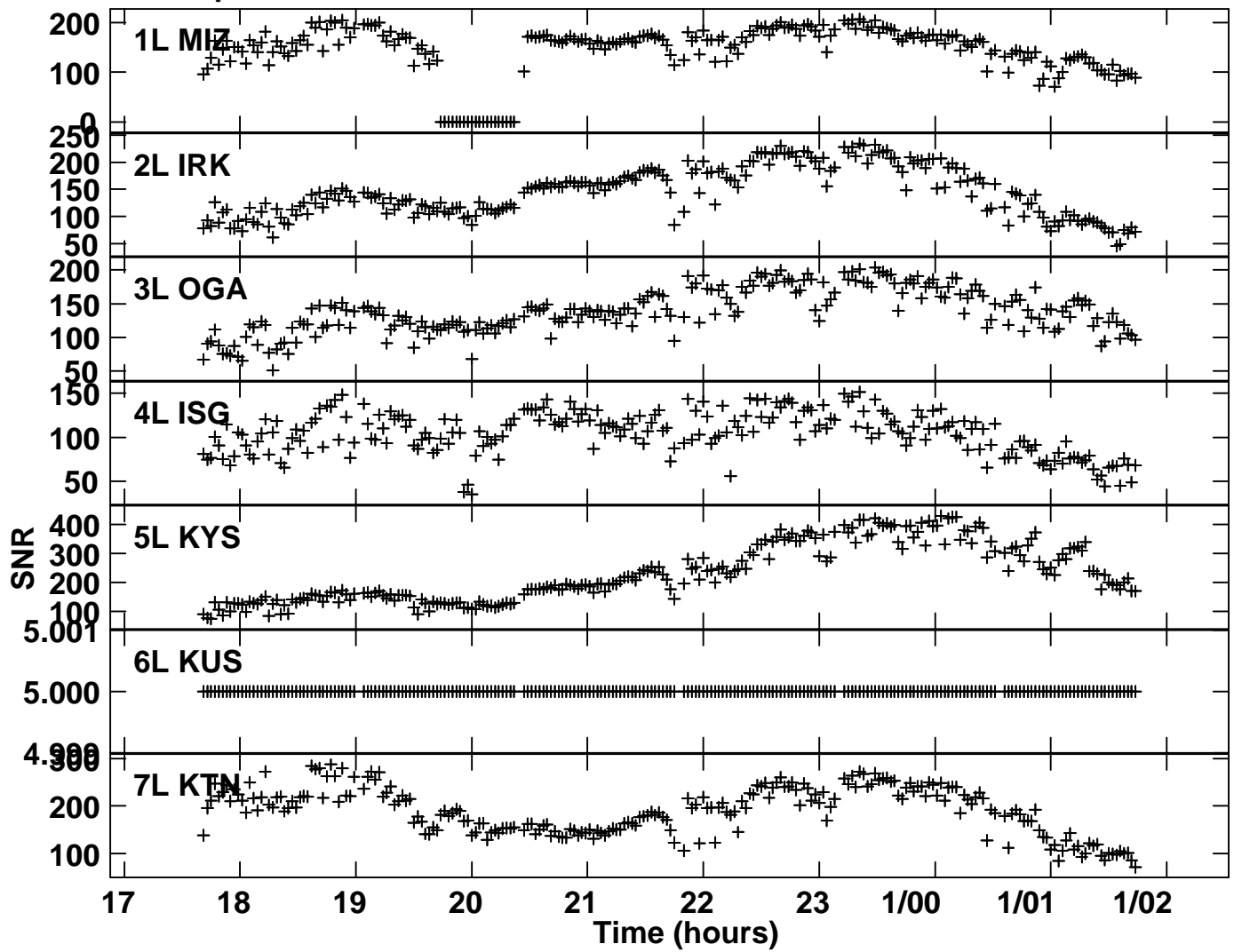
Vector averaged cross-power spectrum Several baselines displayed

Timerange: 00/17:40:01 to 00/18:40:00

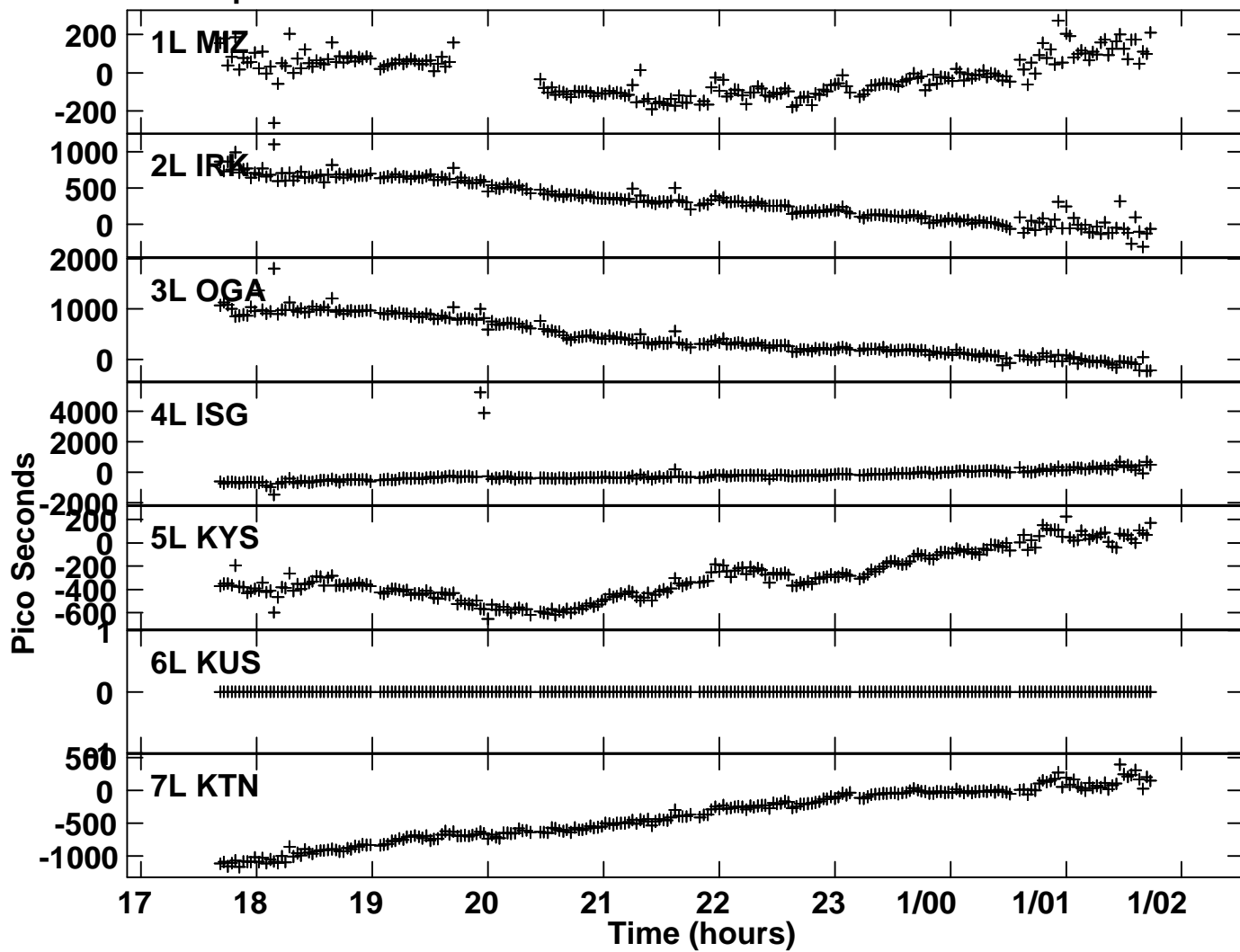
Plot file version 4 created 16-NOV-2015 11:14:05  
Gain amp vs time for R15231A.MSORT.1  
SN 1 Lpol IF 2



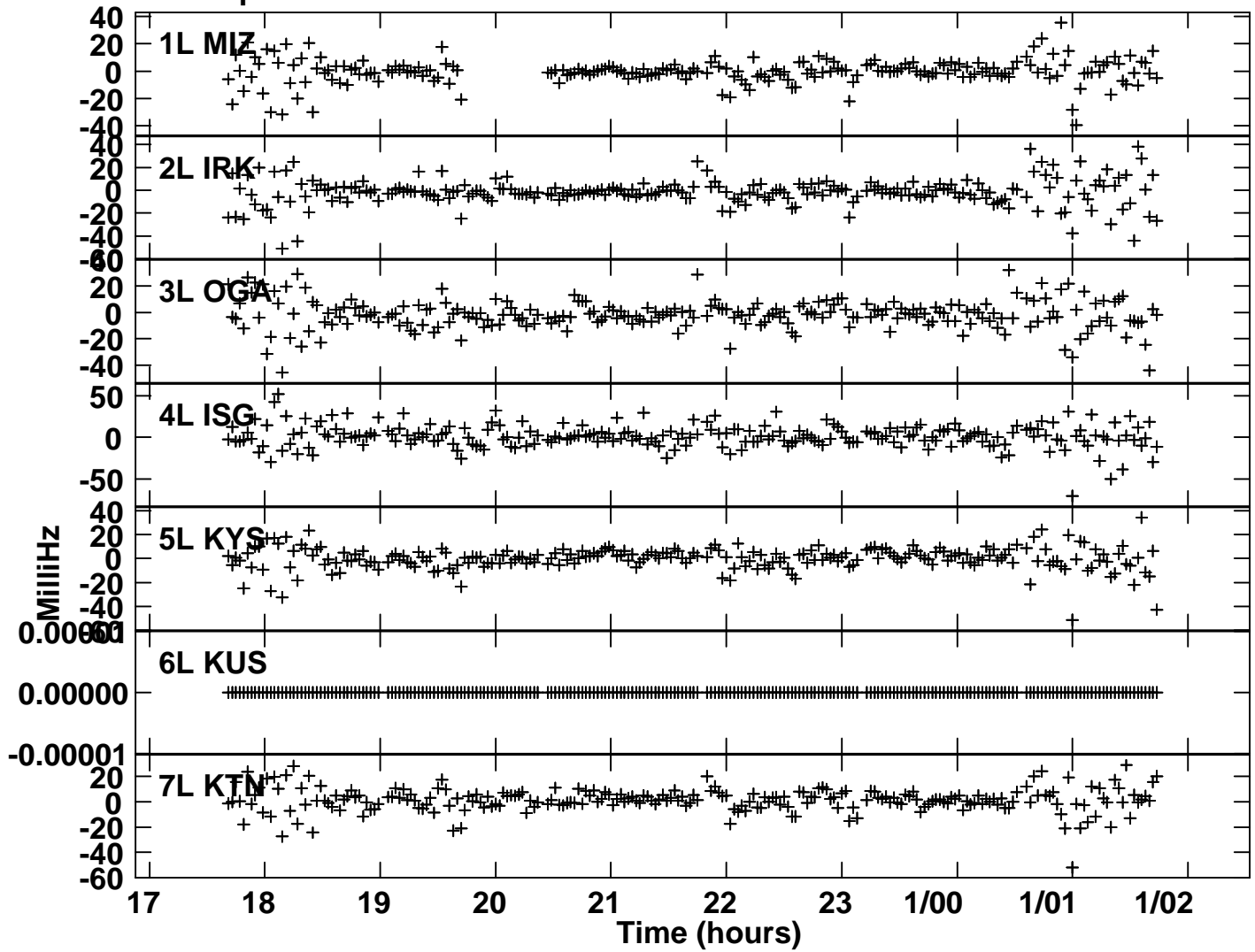
Plot file version 5 created 16-NOV-2015 13:24:26  
SNR vs time for R15231A.MSORT.1  
SN 2 Lpol IF 2



Plot file version 6 created 16-NOV-2015 13:24:48  
Delay vs time for R15231A.MSORT.1  
SN 2 Lpol IF 2



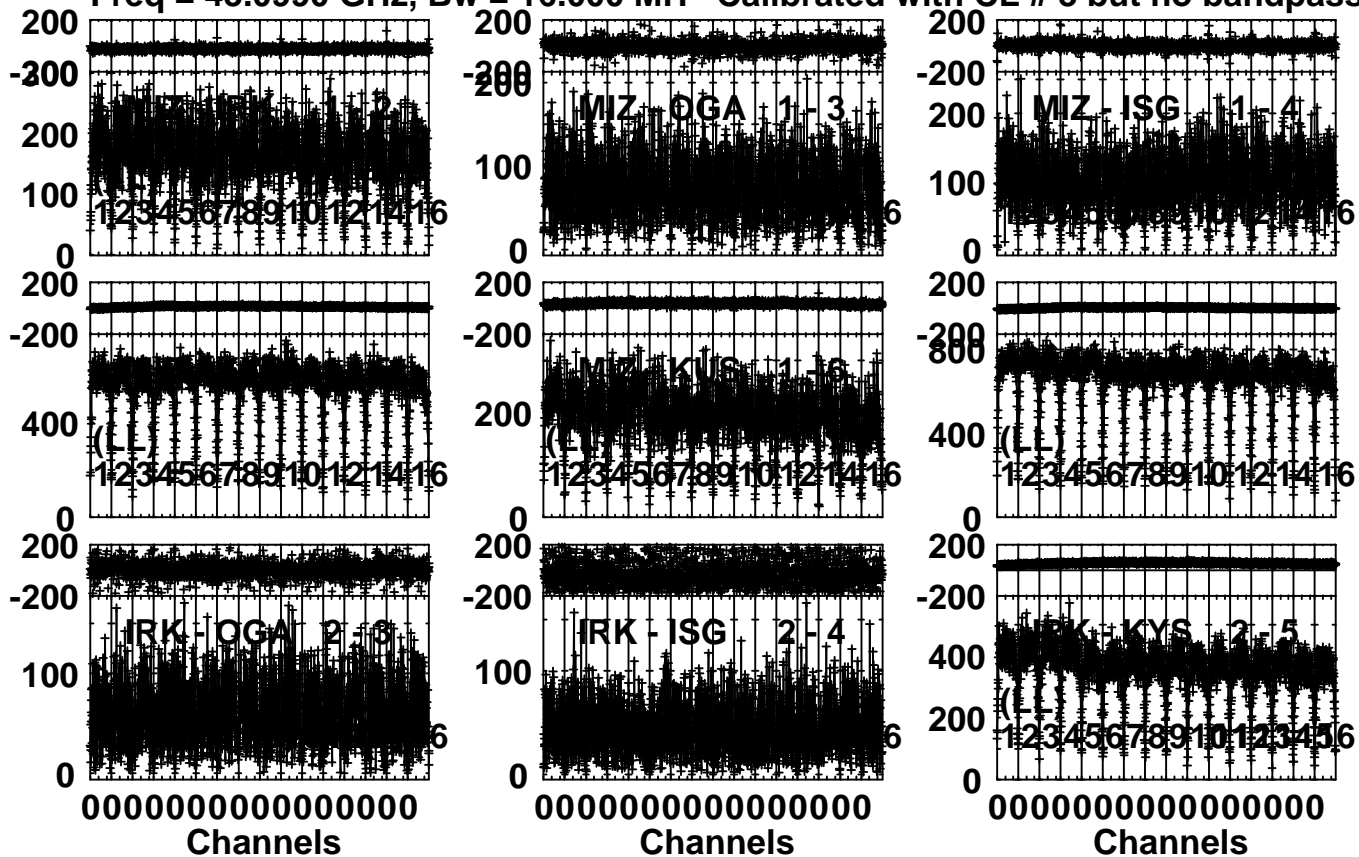
Plot file version 7 created 16-NOV-2015 13:25:16  
Rate vs time for R15231A.MSORT.1  
SN 2 Lpol IF 2



Plot file version 8 created 16-NOV-2015 13:31:10

3C84 R15231A.MSORT.1

Freq = 43.0990 GHz, Bw = 16.000 MH Calibrated with CL # 3 but no bandpass applied



Lower frame: Micro Ampl Jy Top frame: Phas deg

Vector averaged cross-power spectrum Several baselines displayed

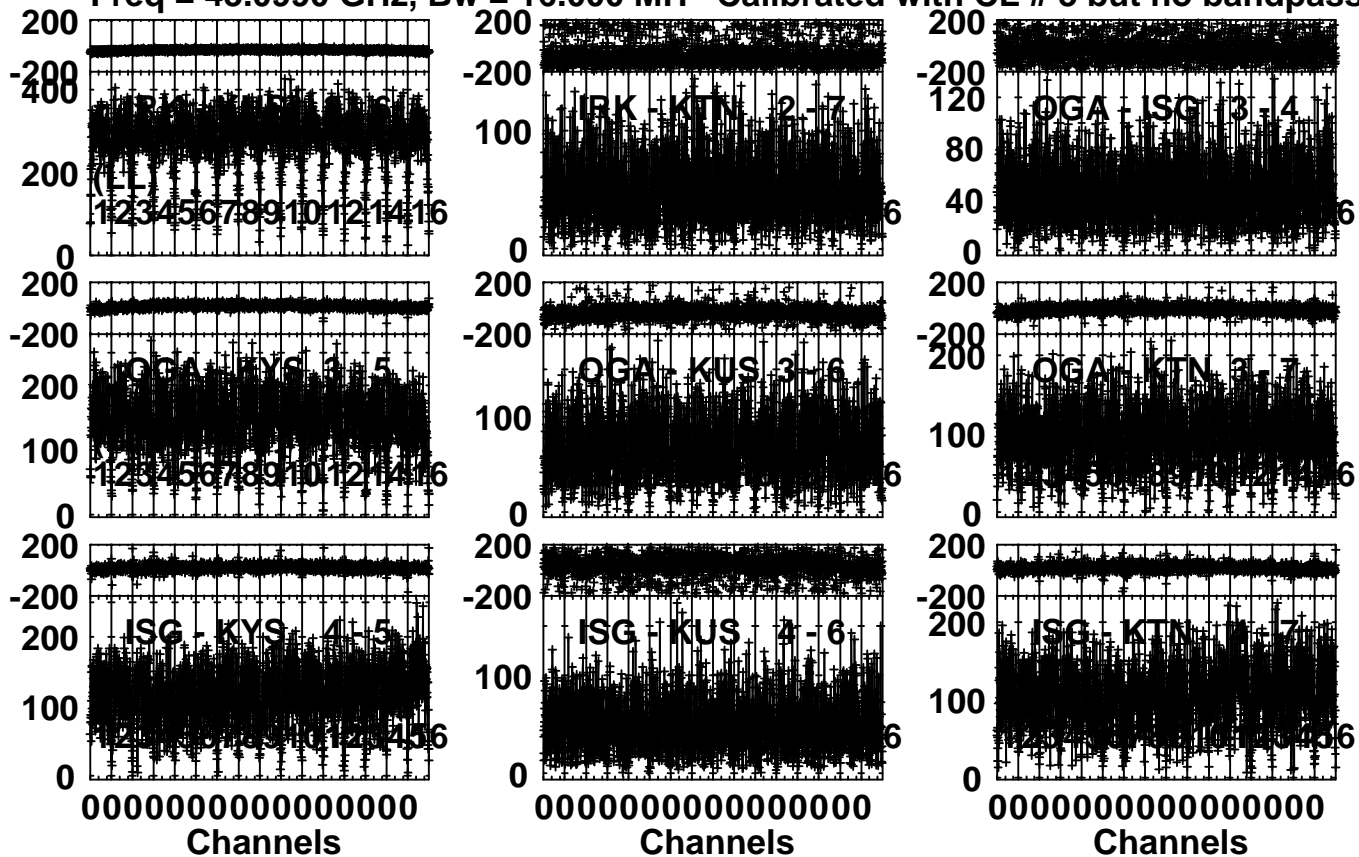
Timerange: 00/17:40:01 to 00/18:40:00



Plot file version 9 created 16-NOV-2015 13:32:38

3C84 R15231A.MSORT.1

Freq = 43.0990 GHz, Bw = 16.000 MH Calibrated with CL # 3 but no bandpass applied



Lower frame: Micro Ampl Jy Top frame: Phas deg

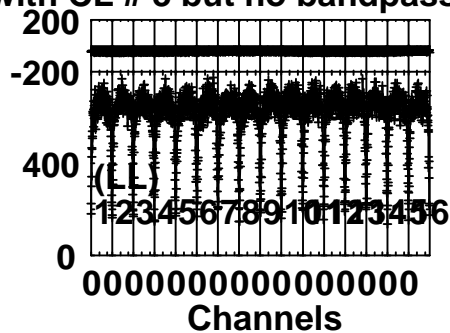
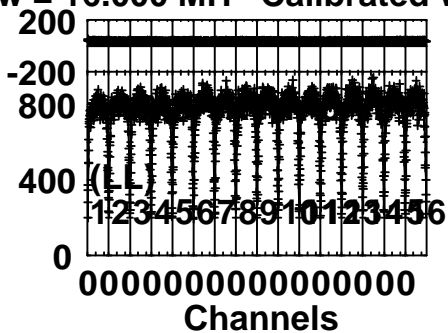
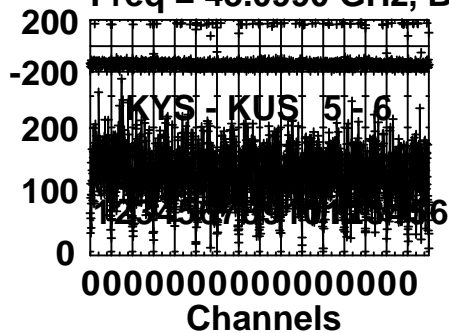
Vector averaged cross-power spectrum Several baselines displayed

Timerange: 00/17:40:01 to 00/18:40:00

Plot file version 10 created 16-NOV-2015 13:34:06

3C84 R15231A.MSORT.1

Freq = 43.0990 GHz, Bw = 16.000 MH Calibrated with CL # 3 but no bandpass applie



Lower frame: Micro Ampl Jy Top frame: Phas deg

Vector averaged cross-power spectrum Several baselines displayed

Timerange: 00/17:40:01 to 00/18:40:00