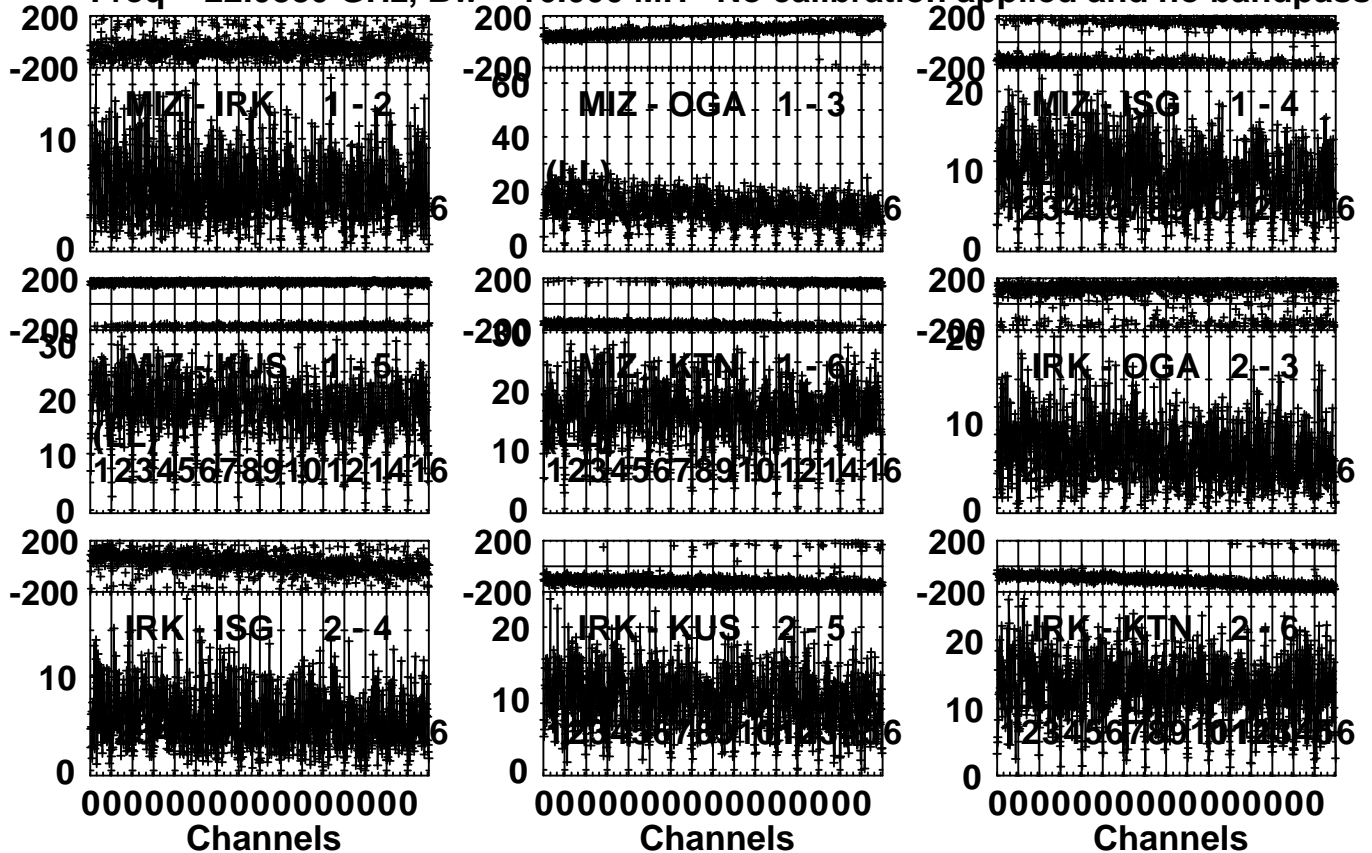


Plot file version 1 created 17-NOV-2015 10:50:13

DA55 R15230A ALL.UVDATA.1

Freq = 22.0880 GHz, Bw = 16.000 MH No calibration applied and no bandpass appli



Lower frame: Milli Ampl Jy Top frame: Phas deg

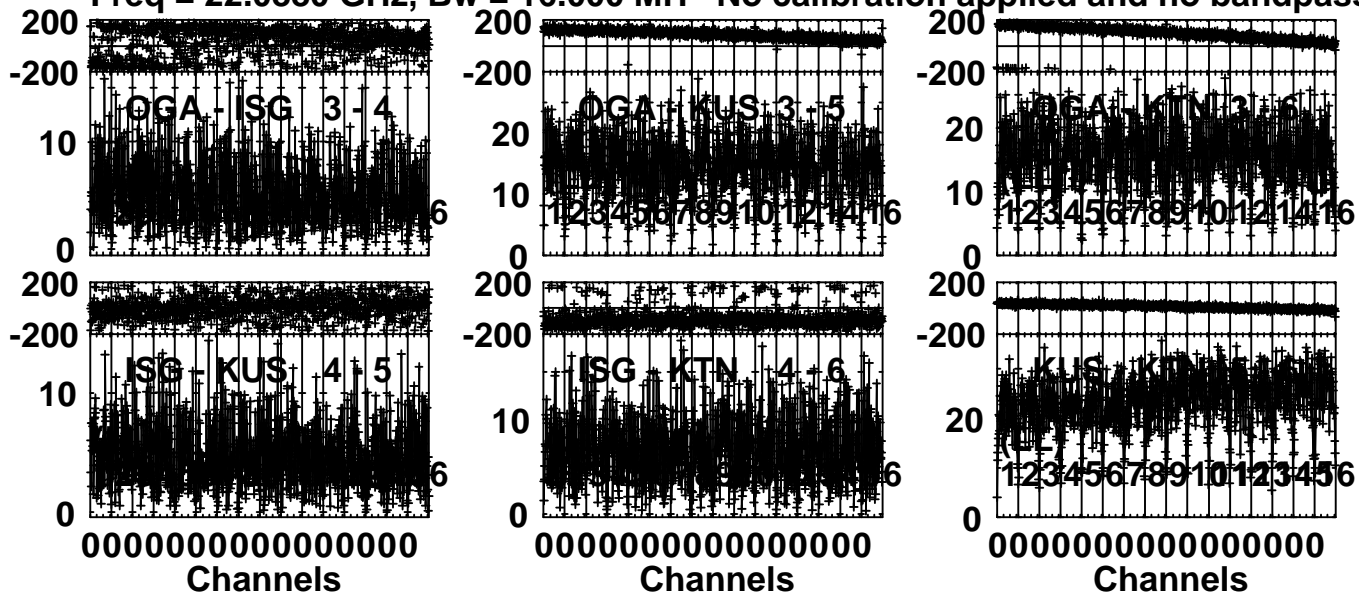
Vector averaged cross-power spectrum Several baselines displayed

Timerange: 00/20:57:02 to 00/21:01:59

Plot file version 2 created 17-NOV-2015 10:50:13

DA55 R15230A ALL.UVDATA.1

Freq = 22.0880 GHz, Bw = 16.000 MH No calibration applied and no bandpass appli

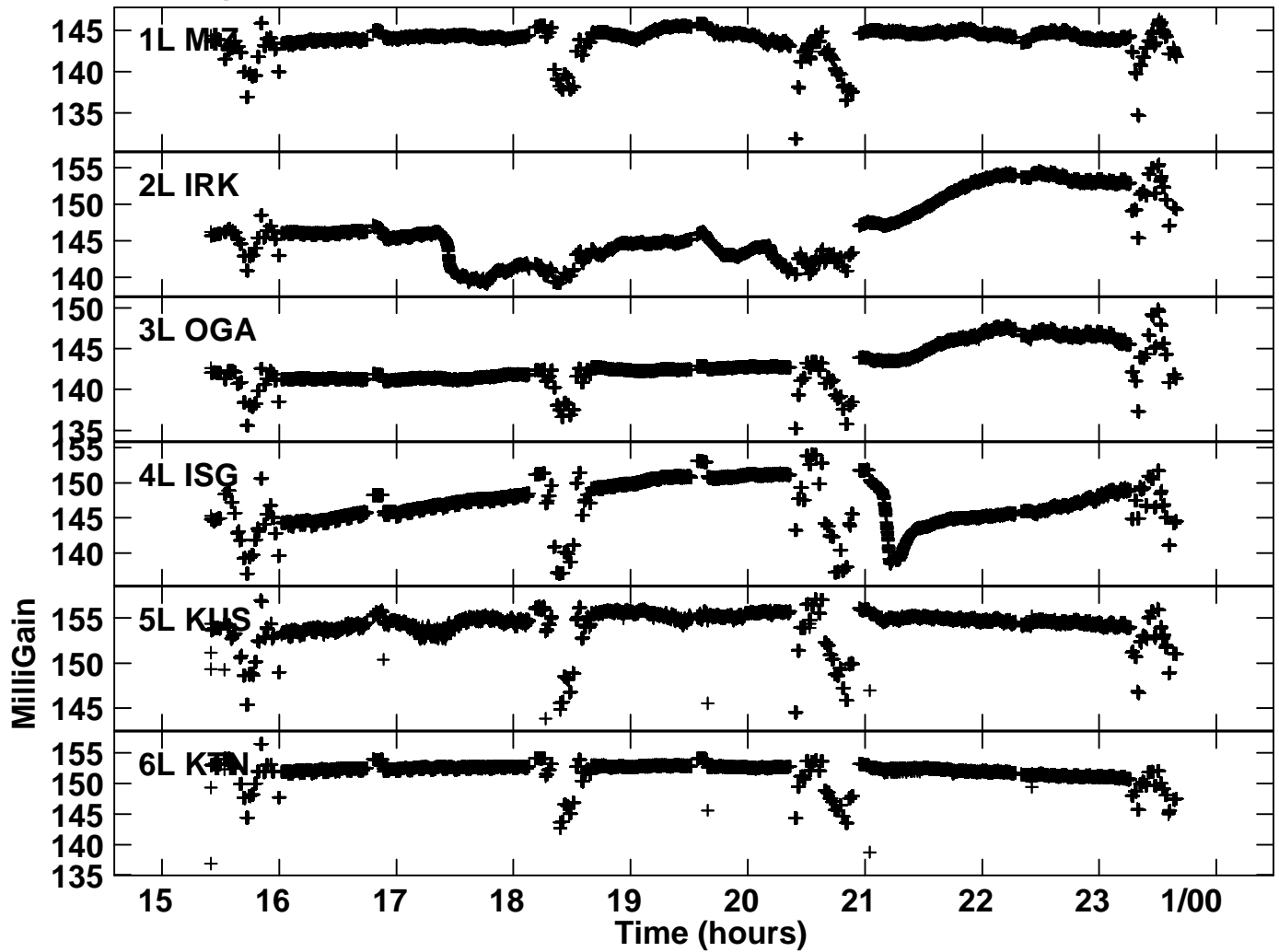


Lower frame: Milli Ampl Jy Top frame: Phas deg

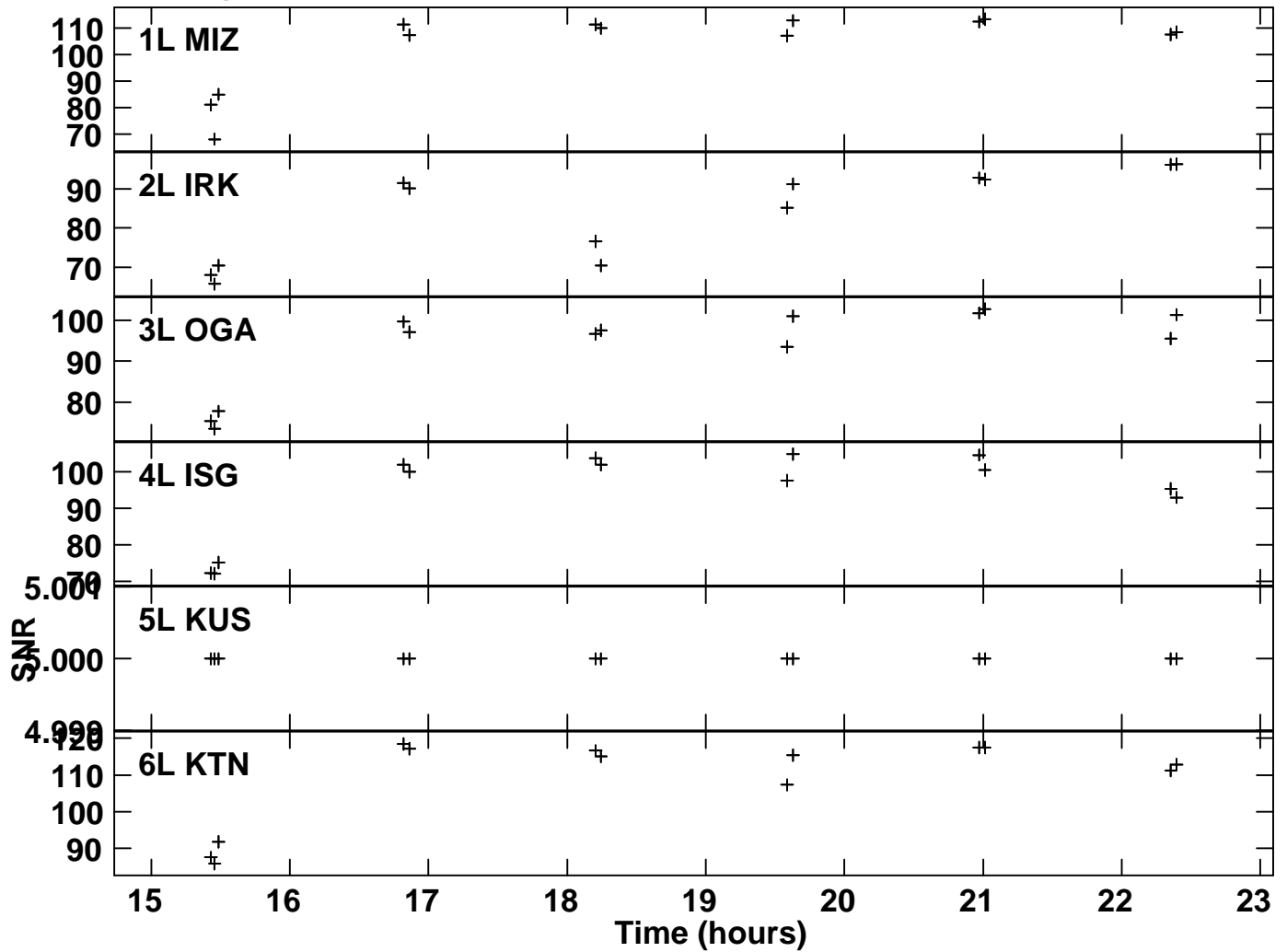
Vector averaged cross-power spectrum Several baselines displayed

Timerange: 00/20:57:02 to 00/21:01:59

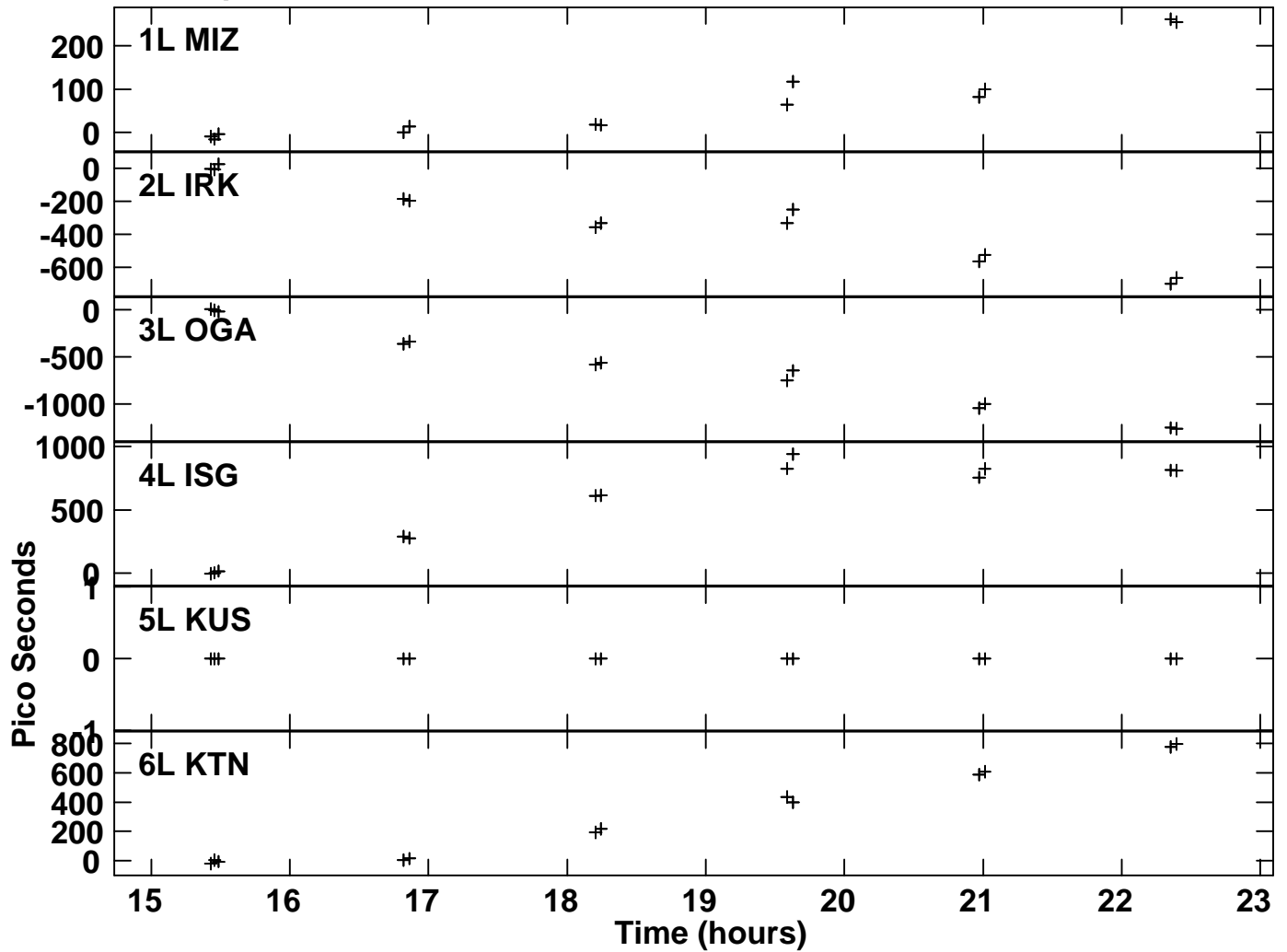
Plot file version 3 created 17-NOV-2015 10:54:38
Gain amp vs time for R15230A_ALL.UVDATA.1
SN 1 Lpol IF 3



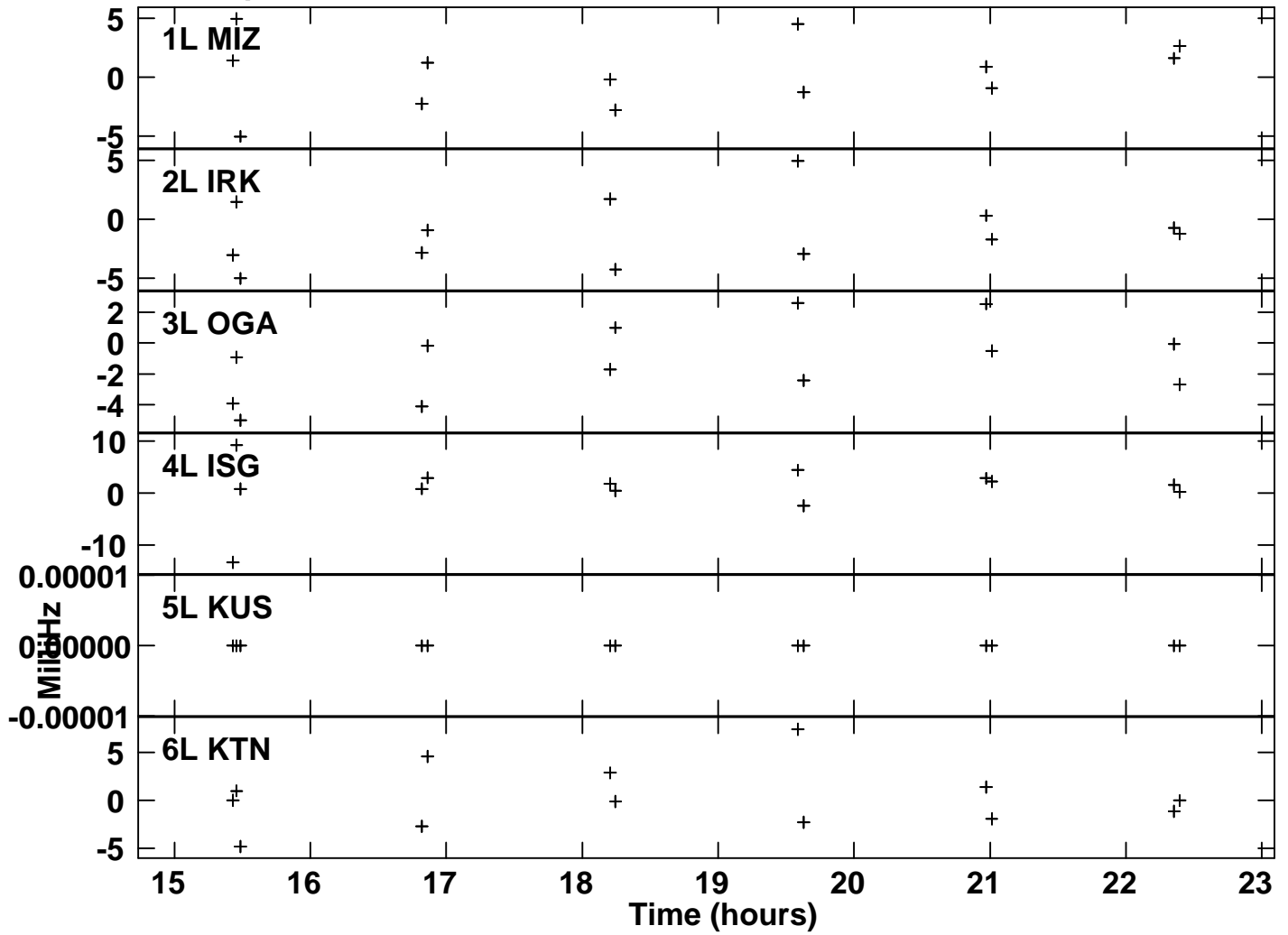
Plot file version 4 created 17-NOV-2015 10:54:48
SNR vs time for R15230A_ALL.UVDATA.1
SN 2 Lpol IF 3



Plot file version 5 created 17-NOV-2015 10:54:53
Delay vs time for R15230A_ALL.UVDATA.1
SN 2 Lpol IF 3



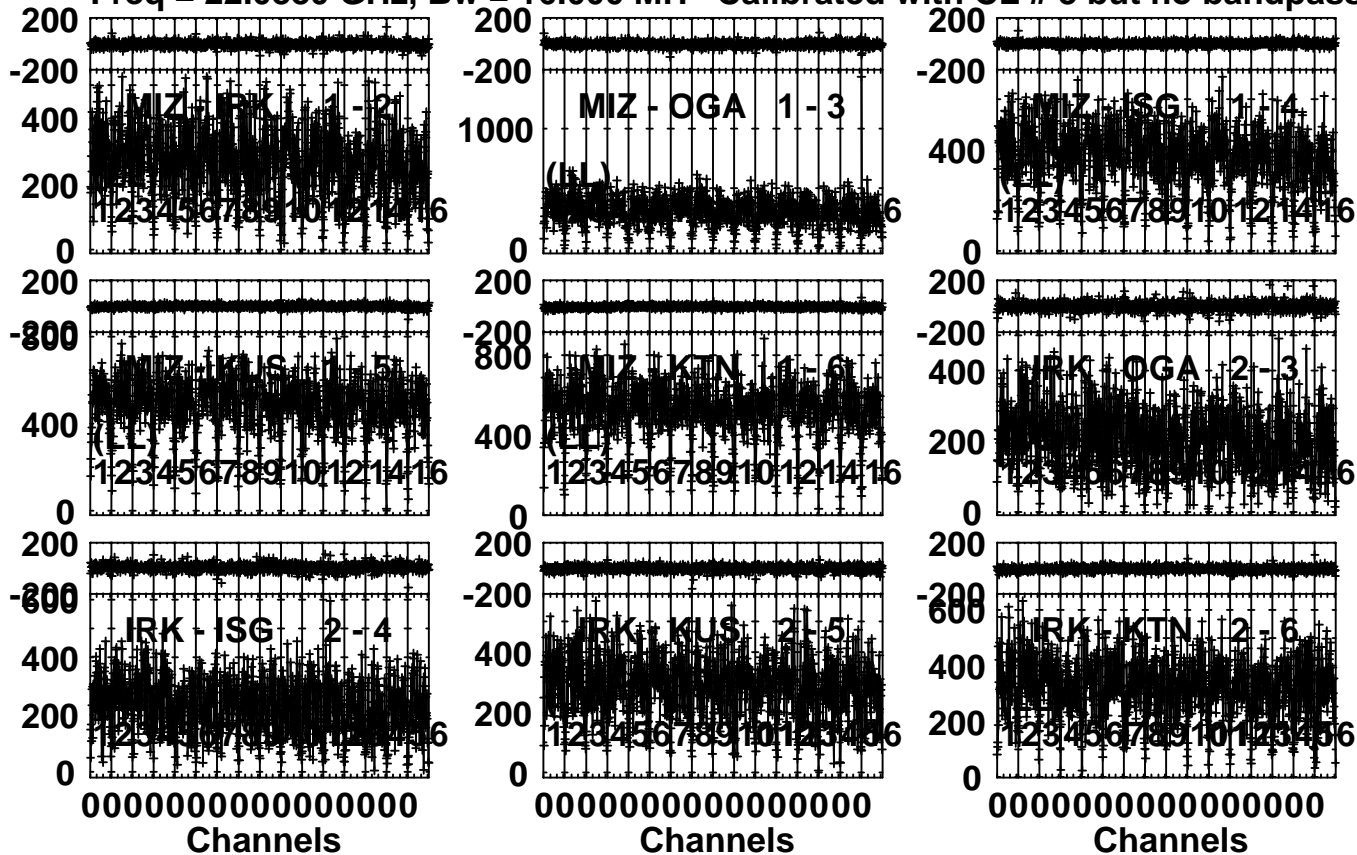
Plot file version 6 created 17-NOV-2015 10:54:56
Rate vs time for R15230A_ALL.UVDATA.1
SN 2 Lpol IF 3



Plot file version 7 created 17-NOV-2015 10:55:08

DA55 R15230A ALL.UVDATA.1

Freq = 22.0880 GHz, Bw = 16.000 MH Calibrated with CL # 3 but no bandpass applied



Lower frame: Micro Ampl Jy Top frame: Phas deg

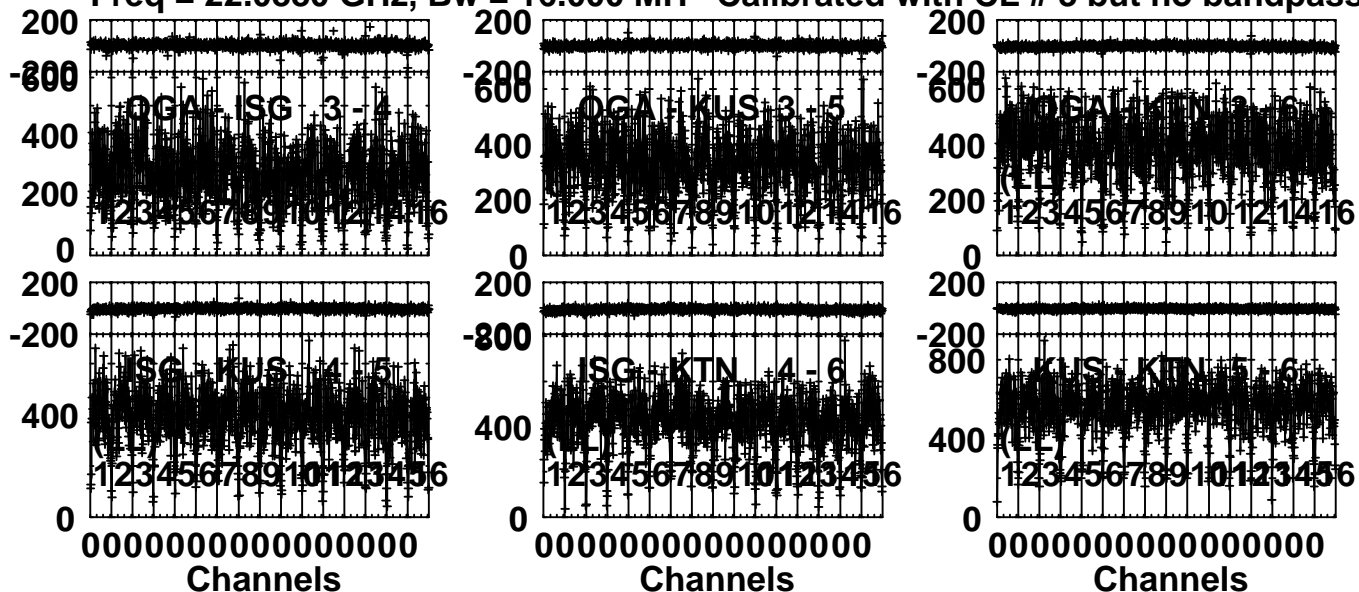
Vector averaged cross-power spectrum Several baselines displayed

Timerange: 00/20:57:02 to 00/21:01:59

Plot file version 8 created 17-NOV-2015 10:55:10

DA55 R15230A ALL.UVDATA.1

Freq = 22.0880 GHz, Bw = 16.000 MH Calibrated with CL # 3 but no bandpass applied



Lower frame: Micro Ampl Jy Top frame: Phas deg
Vector averaged cross-power spectrum Several baselines displayed
Timerange: 00/20:57:02 to 00/21:01:59